

Interlocking

Product Highlights

- Non-combustible metal cladding profile
- Versatile design and install options available
- Streamlined and flat façade aesthetic with concealed fixings
- Suitable for wall cladding and soffit only
- Pronounced "shadow line" effect between panels

Product Specifications

Rib Height Available	25mm panel height (depth of recess)
Length of Panel	Panel lengths available from a minimum 500mm, dependant on material selection - recommended maximum 4000mm length *
Cover Widths available	205mm – 505mm pan widths (material dependant) with up to a 25mm recess between panels
Substrate Requirements	Substrate requirements are a metal tophat no less than 0.7 BMT zinalume and spaced at a maximum of 600 centres *
Tolerance (mm)	Sheet length: +/- 7mm Covering width: +/- 7mm
Stop End and/or Hook	Recommended by ACS
Fire Rated/BAL Applications	Suitable for use in fire rated and BAL applications in conjunction with a suitable wall build up*

Brands

COLORBOND® steel
 GALVABOND® steel
 ZINCALUME® steel
 RHEINZINK®
 PREFAL Aluminium
 Aurubis
 eZinc®
 VMZINC®
 Unicote®, Unicote® Lux
 MagnaFlow, ColorCote® & UniZinc™

Metals

Steel, Aluminium, Copper, Brass,
 Weathering Steel, Galvanised Steel,
 Titanium Zinc, Stainless Steel



Key Benefits

- Suited for residential and commercial wall cladding applications.
- Custom panel widths available to suit design requirements.
- Flexibility with customising recess width.
- Minimal maintenance compared to other building materials.
- Smooth contemporary profile with no visible fixings.
- Can be applied to a curved wall application.
- Ability to taper panels.
- Allows for building expansion and contraction.

Testing

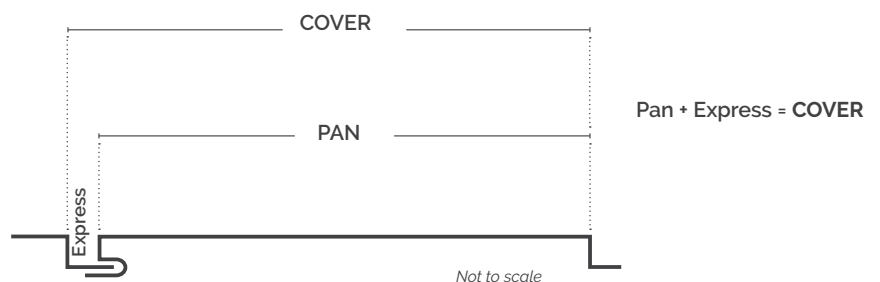
- This product has been tested in accordance with Australian Standard AS 4040.2-1992 - "Method of testing sheet roof and wall cladding for non-cyclonic regions" and therefore satisfies AS/NZS 1562.1:1992 Design & Installation of sheet roof and wall cladding - metal. For further information please contact us.

Technical Support

- Architectural Cladding Suppliers are here to help you. We can manufacture and provide everything that is required to complete your project from our cladding profiles, to all the associated accessories and flashings via our sister company, PPC Flashings. For further information or support with flashings please contact the PPC Flashings team.
- As every architectural project is different, if you require custom advice, we can discuss your project specifications and will work with you to fabricate to your individual requirements. For any further technical support please contact Architectural Cladding Suppliers.

Installation

- Architectural Cladding Suppliers cannot guarantee that your metal panels will not experience the effects of what is commonly referred to as oil canning. Oil canning can occur on all types of metal and is not considered a panel defect. For more information please refer to our [website article on oil canning](#).
- We recommend installing a "breathable vapour" membrane to act as a second line of defence to stop any water ingress as well as allowing the building to "breathe". Any flashings required can be sourced via PPC Flashings.
- Stop ends and/or hooks to each panel are highly recommended by Architectural Cladding Suppliers. If you are unsure, please contact us prior to ordering.
- When using a metal top hat the minimum thickness requirement is to be no less than 0.70 BMT.
- Architectural Cladding Suppliers recommend that any of our cladding products are installed by a qualified and experienced cladding installer for best results. Do not continue if the installation does not seem right, contact Architectural Cladding Suppliers.



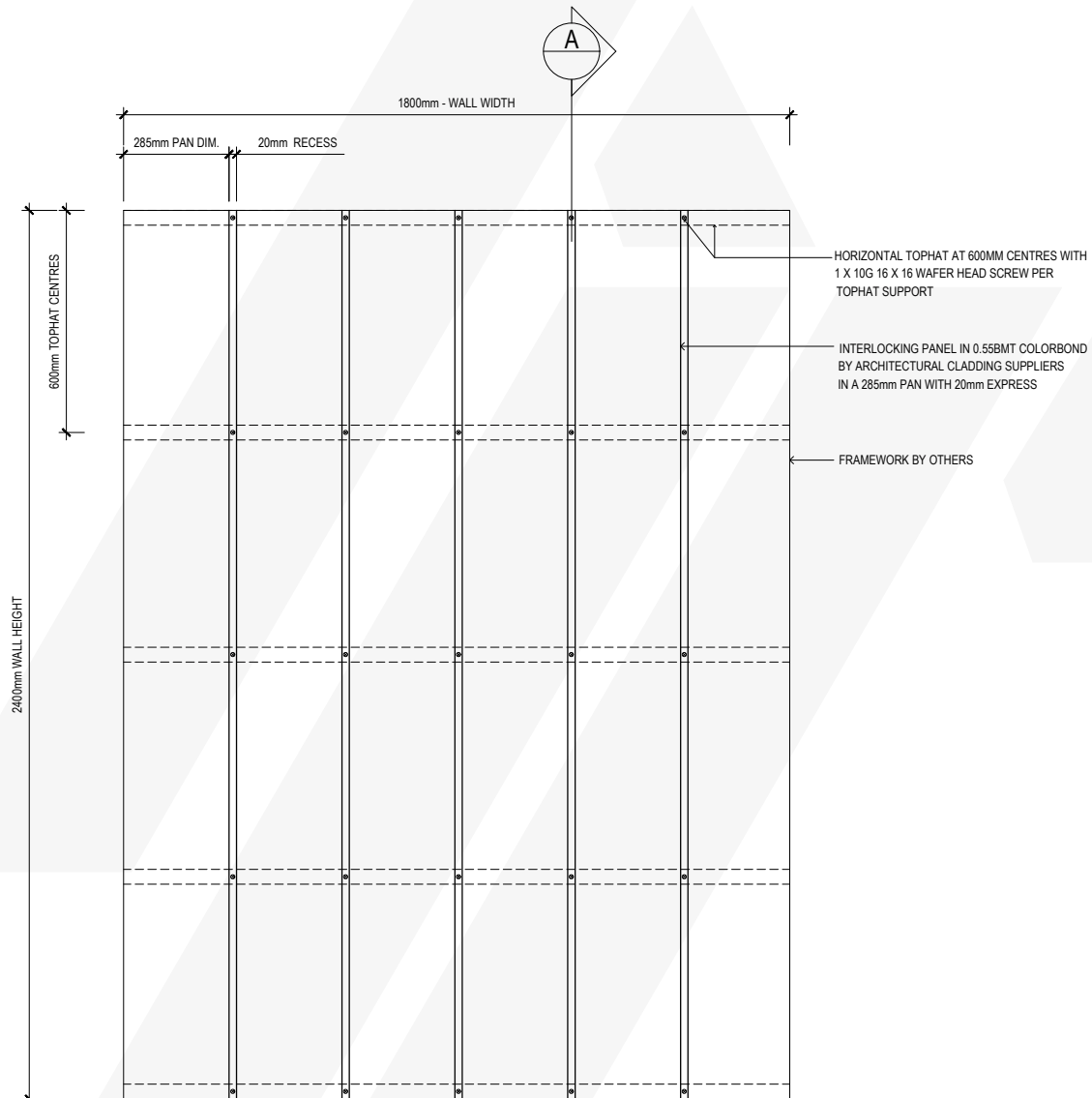
GENERAL DISCLAIMER:

Architectural Cladding Suppliers recommend that any of our cladding products are installed by a qualified and experienced cladding installer for best results. Our ACS datasheet is to be used as a guide only and for further technical support or advice, please contact our cladding team, prior to placing your order or any installation works.

Assembly Instruction

Interlocking Panel

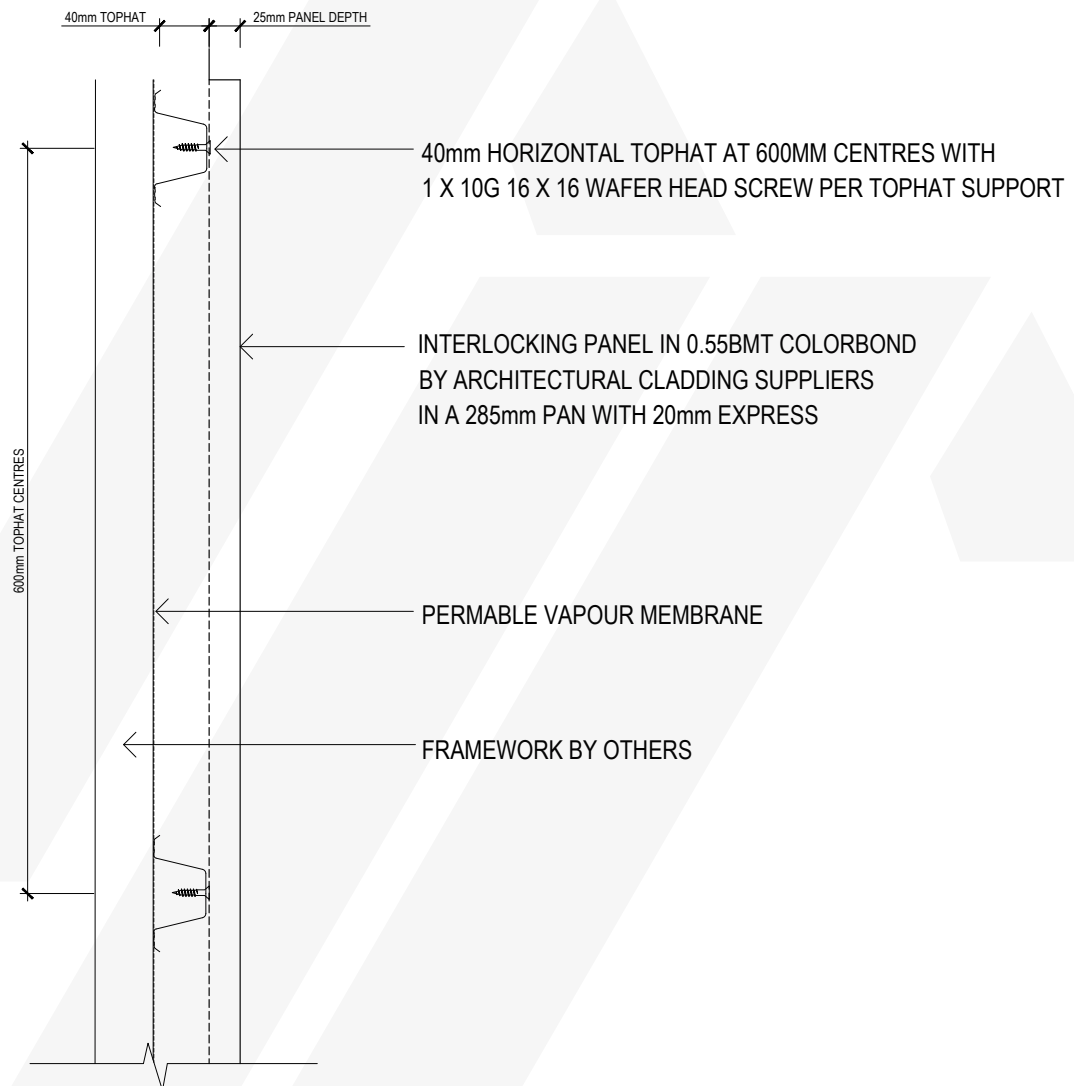
285mm + 20mm Express - Not to scale
Wall Dimensions - Example only



Assembly Instruction

Section A

Scale - 1:5



PLEASE NOTE:

The nominated 40mm tophat is a guide only, and height of tophat depends on the wall build up requirements and is not determined by ACS.