



# ROOF & FAÇADE AS STRONG AS A BULL!

PREFA'S COMPLETE SYSTEMS  
MADE OF ALUMINIUM



[WWW.PREFA.COM](http://WWW.PREFA.COM)



Product: shingle  
 Colour: P.10 nut brown  
 Location: Gamitz (Austria)  
 Architectural design: Viereck Architekten ZT GmbH  
 Installed by: A. Leopold GmbH



## A STRONG MATERIAL MADE BY STRONG PERSONALITIES FOR STRONG PERSONALITIES

PREFA has been relying on its innovative spirit and unfailing integrity for over 75 years to offer roof and façade systems as well as rainwater goods and much more. As a faithful partner, we have always supported domestic clients, architects and planners as well as metalworkers and roofers with their building projects. We are proud of the many unique new builds and renovation projects that are implemented every year using PREFA aluminium products, and which not only have distinctive designs but are also durable and robust, even in extreme weather conditions.

Your PREFA management team



### COVER PHOTO

Product: FX.12 roof and façade panel  
 Colour: bronze (special colour)  
 Location: Andrichsfurt (Austria)  
 Installed by: Haslinger  
 building-related special solution

### LEGAL NOTICE

Subject to technical modifications and printing errors.  
 Photos: PREFA | Croce & Wir | Marion Lafogler | Werner Jäger  
 Printed colours may vary from the original material. 05/021 | EN | TM

# TABLE OF CONTENTS

<b>INFORMATION</b>	<b>2</b>	<b>FAÇADE SYSTEMS</b>	<b>52</b>
Introduction	2	PRODUCT OVERVIEW	53
Table of contents	3	Façade shingle	56
Our locations	4	Rhomboid façade tile 44 × 44   29 × 29	58
Our awards and quality seals	5	Rhomboid façade tile 20 × 20	59
Aluminium, our material	6	FX.12 façade panel	60
P.10 surface	7	PREFALZ and FALZONAL®	62
PREFA's guarantee commitment	8	Siding	66
Services	9	Siding.X	68
10 good reasons	10	PREFABOND aluminium composite panel	70
PREFA's complete system	12	Extruded profiles	72
<b>ROOF SYSTEMS</b>	<b>14</b>	<b>FLOOD PROTECTION SOLUTIONS</b>	<b>74</b>
PRODUCT OVERVIEW	15	<b>RENOVATION</b>	<b>78</b>
Roof tile	18	OVERVIEW OF TOPICS	79
R.16 roof tile	20	<b>EXTREME CONDITIONS</b>	<b>90</b>
DS.19 shingle	22	OVERVIEW OF TOPICS	91
Shingle	24	Extreme weather conditions	92
Rhomboid roof tile 44 × 44	26	Completely protected	93
Rhomboid roof tile 29 × 29	28	Snow guard system	94
FX.12 roof panel	30	Storm-proof	95
PREFALZ and FALZONAL®	32	<b>TECHNICAL ASPECTS</b>	<b>96</b>
<b>ORIGINAL ACCESSORIES</b>	<b>36</b>	Rainscreen	96
PRODUCT OVERVIEW	37	Roof structure	97
Accessories	38	Roof shapes	98
Snow guard system	39	Roof pitch	99
Roof safety	40	Colour range	100
Lightning protection	41	Product range	102
Solar panel mounting system	42		
<b>ROOF DRAINAGE</b>	<b>44</b>		
Gutters and downpipes	46		
Box gutter and square downpipe	48		

## OUR SATISFIED CUSTOMERS ARE OUR GREATEST MEASURE OF SUCCESS

### COUNTRIES WITH PRODUCTION PLANTS

**AUSTRIA** 3182 Marktl  
3100 St. Pölten  
**GERMANY** 98634 Wasungen

### EXPORT COUNTRIES

**FRANCE** 73190 Challes-les-Eaux  
**ITALY** 39100 Bolzano  
**POLAND** 02-295 Warsaw  
**SWEDEN** 218 45 Vintrosa  
**SWITZERLAND** 8800 Thalwil  
**THE CZECH REPUBLIC** 193 00 Prague  
**HUNGARY** 2040 Budaörs  
**UNITED KINGDOM** SW1H 9HP London

### SALES OFFICES

Belgium	Luxembourg
Denmark	The Netherlands
Estonia	Norway
Ireland	Russia
Croatia	Slovakia
Latvia	Slovenia
Lithuania	

### TRAINING CENTRES



## FACTS AND FIGURES

**3**  
production sites

**5,000**  
products

**23**  
countries

**550**  
employees

**9**  
training centres

**3.200** training course participants  
throughout the world

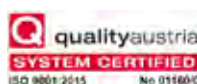




## OUR AWARDS AND QUALITY SEALS BOOST CONFIDENCE IN THE FACT THAT WE ARE DOING THE RIGHT THING

For decades, we have been striving every day to offer not only our customers, but also our employees and partners the highest quality. We are proud to be a model company that puts heart and soul into everything we do. This is confirmed by the numerous awards and seals of approval that we have received from independent experts, and of which we are very proud. Here's a selection of the quality seals, certificates and examination certificates that PREFA has received over the years:

- The Austria Quality Seal for Austrian Model Companies awarded by the Austrian Society for the Promotion of Quality (ÖQA)
- Quality Austria ISO system-certified
- Government award for apprenticeship training
- Best Apprenticeship Training Company award from the Lower Austria Chamber of Commerce
- Certificate for Energy and Quality Management awarded by Quality Austria and the International Certification Network (IQNet)
- Participant in the 2016 European Aluminium Awards, Industrial Design & Engineering
- Quality label for flood protection safety awarded by the European Flood Protection Association (Europaverband für Hochwasserschutz e.V.)
- And many more ...



## A MATERIAL THAT PROVES ITS STRENGTHS IN EVERY DISCIPLINE

Today, aluminium is used in almost every area of architecture, from roofs and façades to load-bearing structures, and from windows and doors to interior design. The construction industry processes over 500,000 tonnes of aluminium every year. Thanks to its robust, resistant and extremely long-lasting material properties, aluminium meets all the functional and quality requirements of the building industry. It is lightweight, stable, rust-proof and can be recycled without any loss of quality.

However, the main advantage of aluminium is its fascinating malleability. Aluminium alloys have a very good hot and cold forming capacity. Even in low temperatures, the material can be processed very well.

### OBTAINING PRIMARY AND SECONDARY ALUMINIUM

Primary aluminium is the term describing the aluminium that is initially produced from aluminium oxide. In turn, aluminium oxide is extracted from bauxite (an aluminium-rich sedimentary rock). Primary aluminium is pure aluminium and the raw material for producing aluminium alloys.

Secondary aluminium, on the other hand, is recycled aluminium recovered from scrap metal. Aluminium can be fully recycled again and again without any loss of quality. So we can say that aluminium is not “consumed” but rather “used”. Only a fraction of the energy required to produce primary aluminium is needed to produce secondary aluminium. Today, the aluminium used in the building industry is largely recycled and reused. Secondary aluminium is also the material that PREFA mainly uses to produce its aluminium products.

[UK.PREFA.COM/QUESTIONS-AND-ANSWERS](https://uk.prefa.com/questions-and-answers)

## THIS GLISTENING MATERIAL BOASTS BOTH EFFICIENCY AND BEAUTY

Expert Jörg H. Schäfer, Head of Recycling and Sustainability at the “Gesamtverband der Aluminiumindustrie (GDA) e.V.” (General Association of the Aluminium Industry), knows all about aluminium’s excellent properties. In his opinion, the material is unrivalled in terms of its functionality, value retention, structural aesthetics and resource efficiency.

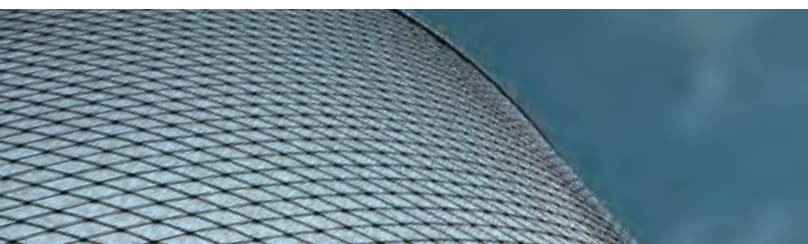


*It is precisely because of its aesthetics that it's so popular in the design sector.*

Jörg H. Schäfer, Head of Recycling and Sustainability at the Gesamtverband der Aluminiumindustrie (GDA) e.V.

“It’s all about the value that aluminium brings to architecture,” Jörg H. Schäfer explains.

“The favourable strength-to-weight ratio enables lightweight, intricate structures to be created which not only offer enormous freedom in design but are also extremely robust. With a specific weight of 2.7 grams per cubic centimetre, aluminium is the lightest metal for buildings compared to copper, iron and zinc.”



## P.10 COLOUR-FAST SURFACE

### UV-RESISTANT, COLOURFAST AND WEATHERPROOF

With P.10, PREFA has developed a colour-resistant finish that meets even the highest quality standards. The material withstands external influences and stresses, and is UV-resistant, colour-fast and weatherproof. At the same time, aluminium is an unbelievably lightweight and stable material, offering a wide range of planning and design possibilities.



# P.10

P.10 COIL-COATING FINISH

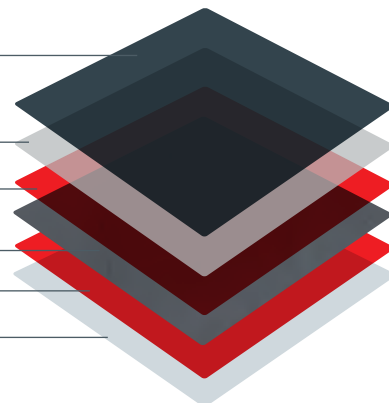
PRIMER

PRE-TREATMENT

BASIC MATERIAL (ALUMINIUM)

PRE-TREATMENT

PROTECTIVE PAINT ON REVERSE



## FD.TEC FREQUENCY DAMPER TECHNOLOGY

### TAKES THE MOMENTUM OUT OF SOUND

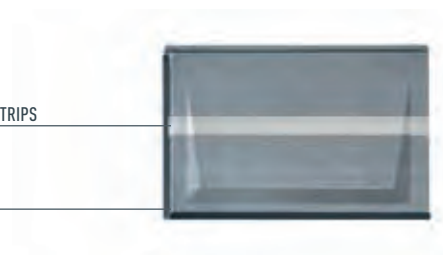
PREFA's unique FD.TEC frequency damper technology reduces unwanted frequency ranges to a minimum, and prevents certain sound emissions to a large extent. The purpose of the FD.TEC frequency damper strips attached to the back of all small format PREFA roof elements is to absorb frequencies that can be caused by heavy rainfall.



# FD.TEC

FD.TEC FREQUENCY DAMPER STRIPS

R.16 ROOF TILE





## PREFA'S GUARANTEE COMMITMENT

### Highest quality, produced in Austria and Germany

The weather forecast for the next 40 years is approximately 75,000 hours of sunshine and 35,000 litres of rain per square metre. Decidedly — choosing PREFA is the right decision. PREFA provides a 40-year colour and material guarantee on PREFA roofs and façades. This provides you with optimum protection against **breakage, corrosion (rust), frost damage, chips and blistering**.

### HOW IS PREFA ABLE TO OFFER SUCH A POWERFUL GUARANTEE?

Because PREFA aluminium roofs and façades are absolutely high-tech products, **exclusively produced in Austria and Germany**. Every PREFA product must be installed by a specialist company.

### 40 YEARS — PREFA EVEN GIVES IT IN WRITING

The terms and conditions are stated in the guarantee certificate along with the delivery date. You can find more information about the material and colour guarantee at [UK.PREFA.COM/GUARANTEE](https://uk.prefa.com/guarantee).



*The essential element in a PREFA project is to commission a tried and tested master craftsman's business with trained staff.*

Gerald Hoppel, owner of Hoppel Dach- und Fassadensysteme Ges.m.b.H.



\* The colour guarantee ensures that the P.10 painted surface is protected from chips and blistering under the terms specified in the guarantee certificate.



# SERVICES

---

Whatever you have in mind, we're here for you!

## **PREFA, THE STRONG AND RELIABLE COMPANION**

PREFA has always been a reliable partner, supporting your renovation and new build projects for many years. We offer valuable support throughout all phases of implementation.

## **CUSTOMER SERVICE AVAILABLE FOR YOU**

Each project is individual and every building owner is looking for the best solution. No matter what questions you may have about your project or our products, we will be delighted to help you by phone or email.

And if you require further expertise, we will gladly refer you to the appropriate specialists. You can find our detailed contact information on our website at [UK.PREFA.COM/CONTACT](https://uk.prefa.com/contact).

# OUR PHOTO SERVICE — YOUR HOUSE WITH THE PREFA LOOK

---

Would you like to see what your house would look like with a PREFA roof or PREFA façade? At [UK.PREFA.COM/PHOTO-SERVICE](https://uk.prefa.com/photo-service), we will create a photo montage for you and send it to you, free-of-charge.

- STEP NO. 1** Upload a maximum of two photos of your house.
- STEP NO. 2** Select the PREFA product of your choice.
- STEP NO. 3** Select the colour of your choice. You can choose up to three different standard colours.
- STEP NO. 4** Enter your contact details and click send. Your request will be sent straight off for processing.



## STORM-PROOF

- 1** Every individual roof and façade product is firmly attached to minimize the risk of storm damage.

With the unique, concealed fastenings and the special installation technique with offset joints, your PREFA aluminium roof and PREFA façade are able to withstand even high wind speeds. The number of fasteners can be increased depending on the wind load, and the type of fastening (nailed or screwed) can be adapted accordingly.

## LIGHTWEIGHT

- 3** Light in weight yet high in quality

At just 2.6 kg/m<sup>2</sup>, a PREFA roof weighs only a fraction of a conventional roof (approx. 35–55 kg/m<sup>2</sup>). Therefore, the weight on the roof structure of a typical detached house is reduced by up to ten tonnes! The light weight of aluminium also has a positive influence on transport and labour.

## ATTRACTIVE

- 5** A unique design for your building!

PREFA offers infinite design possibilities. Choose from a variety of shapes, formats, colours, installation patterns and surfaces. In the complete system, each product, including accessories, can be perfectly colour-coordinated. Even bespoke colours are available on request in the required quantities.

## RUST-PROOF

- 2** PREFA roofs and façades are completely weatherproof and guaranteed rust-proof.

Aluminium forms a protective layer which constantly self-regenerates to protect itself from damage. In addition, most PREFA roofs and façades products are provided with a high-quality coil-coating finish.

## BREAK-PROOF

- 4** PREFA aluminium roofs and façades withstand even the worst weather conditions.

Not even heavy snow loads, extreme temperature fluctuations or bad weather conditions pose a problem for PREFA aluminium roofs and façades. The reason for this lies in the particularly good material properties and durability of aluminium.

## COLOUR-RESISTANT

- 6** With PREFA, the colour of your choice remains just the way it is.

Thanks to a special coating layer, PREFA product surfaces are highly resistant to temperature and weathering. The reason for this is the coil-coating system which is applied in up to 20 processing steps.

**Building:** "Seethalerhütte" Austrian Alpine Club house, Dachstein (Austria)  
**Product:** PREFA FX.12 roof panel, PREFA FX.12 façade panel  
**Colour:** P.10 stone grey  
**Location:** Dachstein (Austria)  
**Architectural design:** Dreiplus Architekten  
**Installed by:** Grossi Dach



## GREAT FOR RENOVATIONS

**7** | The lightweight material means that there is no need to build an expensive supporting substrate.

In the case of roof renovations, due to structural engineering reasons, old roof structures often have to be prepared so that they can cope with the extremely heavy load that they are subjected to by modern roof tiles. However, with the much lighter PREFA aluminium roof, there's no need to make any additional reinforcements.

## COMPLETE SYSTEM

**8** | Roof, façade and many more well-coordinated products

Not only is PREFA the strong roof specialist, it also produces high-quality products for façades, roof drainage systems, flood protection and solar panel supporting systems — tested and coordinated system components for the outer building shell — exclusively installed by trained specialist companies.

## ENVIRONMENTALLY-FRIENDLY

**9** | Aluminium is fully recyclable.

Aluminium can be recycled as often as necessary without loss of quality. And what's the best thing about that? The manufacture of secondary aluminium requires 95% less energy than that required to obtain primary aluminium. Aluminium's light weight (less transport and construction site times) and durability (does not break, rust or freeze) also ensure its sustainability.

## 40-YEAR GUARANTEE

**10** | 40-year guarantee on colours and materials

PREFA provides a 40-year colour and material guarantee on PREFA roofs and façades. This provides you with optimum protection against breakage, corrosion (rust), frost damage, chips and blistering.

# 10 GOOD REASONS

**True strength knows no weakness.  
Guaranteed by PREFA.**

\* Information about the material and colour guarantee can be found at [uk.prefa.com/guarantee](http://uk.prefa.com/guarantee).

# PREFA'S COMPLETE SYSTEM

Its strength is greater than the sum of all its parts.



- |                                  |  |  |
|----------------------------------|--|--|
| 1. ridge vent                    | 8. verge flashing                            | 14. square downpipe outlet and square downpipe elbow |
| 2. R.16 roof tile                | 9. chimney flashing and cladding             | 15. box gutter corner                                |
| 3. flashing plate and vent pipe  | 10. roof anchor hook according to EN 517 – B | 16. square downpipe (downpipe)                       |
| 4. solar panel supporting system | 11. roof window flashing                     | 17. sidings  |
| 5. valley                        | 12. base plate                               | 18. flood protection system                          |
| 6. pipe-style snow guard system  | 13. box gutter (half-round gutter)           |  |
| 7. snow guard                    |  |  |



PREFA is not just the strong roof specialist, but also produces high-quality roof drainage systems, façades, solar panel supporting substrates, flood protection systems and much more. Thanks to PREFA's complete system consisting of 5,000 different products, a uniform and harmonious building shell can be created to suit your own individual ideas.

## PERFECTLY COORDINATED FROM A TECHNICAL POINT OF VIEW

All products, mounting accessories and peripheral items are perfectly coordinated and delivered together. For example, the necessary mounting accessories are included with all the accessories.

This ensures that all parts match perfectly and the result meets the highest demands in terms of both appearance and quality. To ensure a perfect installation, PREFA roofs and façades should only be mounted by trained professionals. This gives clients and designers maximum security.



### ROOF SYSTEMS

Gables, roof hatches and curves — whether new builds or renovations, an aluminium roof adapts to virtually every roof shape. PREFA's different products ensure a technically perfect, virtually maintenance-free roof covering.

>> PAGE 14



### ORIGINAL ACCESSORIES

The individual components of PREFA's accessories work together perfectly, guaranteeing high fitting accuracy. Manufactured from a single source, they are delivered together with all the parts required for assembly. This ensures safety and the desired durability of a PREFA complete system.

>> PAGE 36



### ROOF DRAINAGE

The drainage systems that have been tried and tested for years are truly outstanding with their sophisticated and detailed technical solutions. They come in many standard colours and are also available in bespoke shades, on request.

>> PAGE 44



### FAÇADE SYSTEMS

Aluminium façades are durable and rust-free, and are easy to clean when slightly soiled. The different systems offer flexible design possibilities and the right solution for every building.

>> PAGE 52



### FLOOD PROTECTION SOLUTIONS

Together with our affiliated company, Neuman Aluminium Strangpresswerk, PREFA has developed a demountable flood protection system made of aluminium. This flexible solution allows buildings and properties to be efficiently protected against damage caused by floods.

>> PAGE 74

# ROOF SYSTEMS

---

All the strength at the top.



Product: rhomboid roof tile 44 x 44  
Colour: P-10 light grey  
Location: Leonding (Austria)  
Installed by: DACH + WAND Kiesenhofer u. Grillberger Ges.m.b.H.



## ROOF TILE



2.3 kg/m<sup>2</sup> — 4 per m<sup>2</sup>



PAGE 18



## R.16 ROOF TILE



2.5 kg/m<sup>2</sup> — 3.4 per m<sup>2</sup>



PAGE 20



## DS.19 SHINGLE



2.75 kg/m<sup>2</sup> — 8 per m<sup>2</sup>



PAGE 22



## SHINGLE



2.5 kg/m<sup>2</sup> — 10 per m<sup>2</sup>



PAGE 24



## RHOMBOID ROOF TILE 44 × 44



2.6 kg/m<sup>2</sup> — 5.25 per m<sup>2</sup>



PAGE 26



## RHOMBOID ROOF TILE 29 × 29



2.6 kg/m<sup>2</sup> — 12 per m<sup>2</sup>



PAGE 28



## FX.12 ROOF PANEL



2.4–2.5 kg/m<sup>2</sup>  
panel (small): approx. 3.4 per m<sup>2</sup>  
panel (large): approx. 1.7 per m<sup>2</sup>



PAGE 30



## PREFALZ | FALZONAL®



approx. 2.3 kg/m<sup>2</sup>



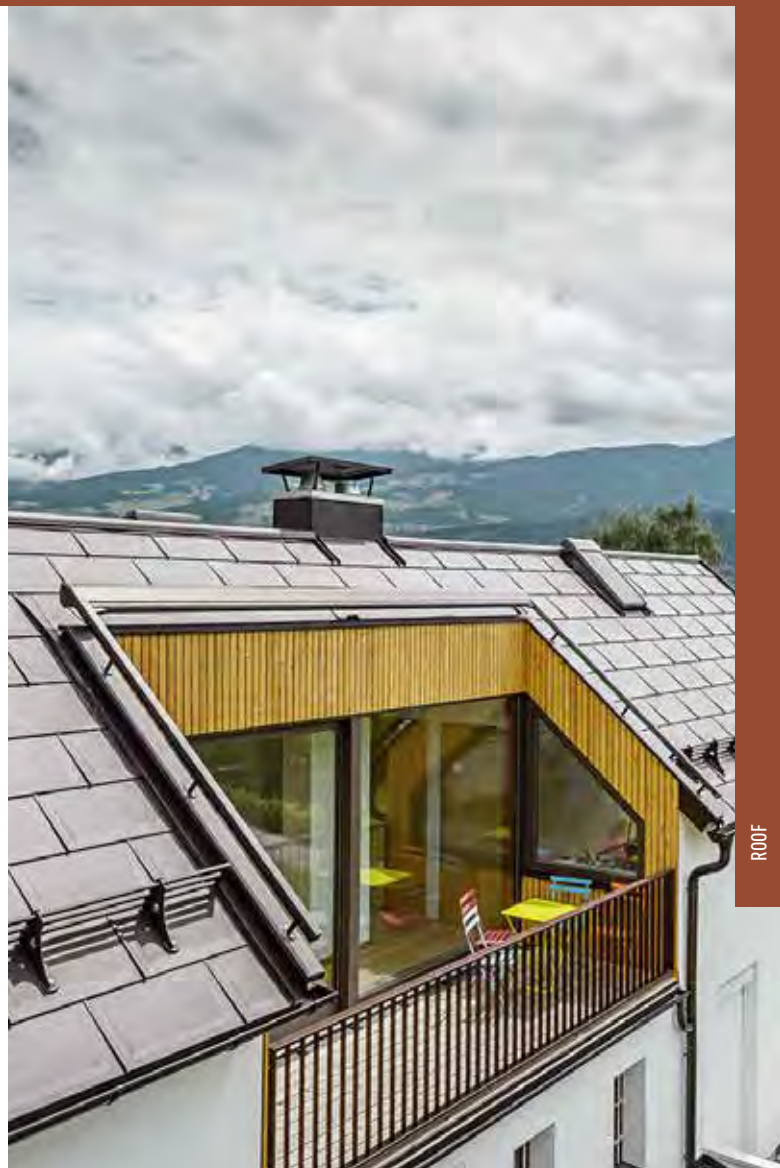
PAGE 32















Product: roof tile  
Colour: P.10 light grey  
Location: Buttikon (Switzerland)  
Installed by: Büeler AG

## ROOF TILE



### The classic tile for traditional and modern buildings

The roof tile is a popular and proven classic for both traditional and modern building projects. Weighing just 2.3 kg/m<sup>2</sup>, the small-format aluminium panel is lightweight yet extremely resistant. It's ideal for covering intact, older roof structures as four tiles are enough to cover one square metre of roof. Installation is also possible on flat roofs with a roof pitch from 12°. However, PREFA recommends installing the tiles in the direction of the prevailing wind and weather.



### MANY YEARS OF VALUABLE EXPERIENCE IN MOUNTAINOUS REGIONS

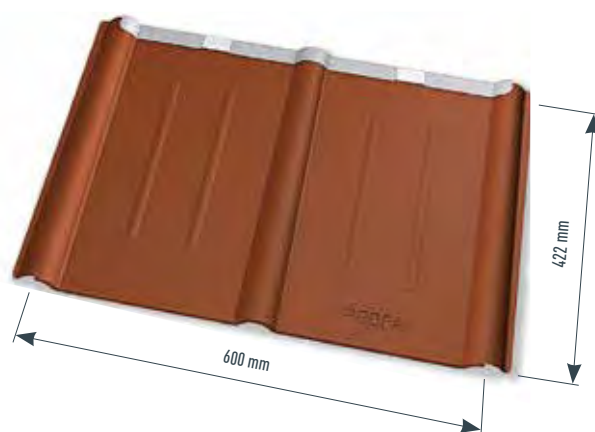
Thanks to the patented folding and fastening system of the roof tile, the roofs are able to put up with high wind speeds. Intensive use, especially in mountainous areas, has provided valuable experience for many years. Even in extreme conditions, PREFA provides a 40-year guarantee on the aluminium material.

\* Information about the material and colour guarantee can be found at [uk.prefa.com/guarantee](http://uk.prefa.com/guarantee).



## ELEGANT APPEARANCE, EXTREMELY WEATHER-RESISTANT

The roof tile is available in ten standard colours and comes with extensive accessories. The P.10 surface has a matt appearance and is UV- and colour-resistant and also weather-resistant. As always with PREFA products, maintenance requirements are extremely low.



## TECHNICAL DATA — ROOF TILE



- **Material**  
coil-coated aluminium, 0.7 mm thick
- **Standard finish**  
stucco
- **Dimensions**  
600 × 420 mm (cover), i.e. 4 pc./m<sup>2</sup>
- **Weight**  
approx. 2.3 kg/m<sup>2</sup>
- **Minimum roof pitch**  
12° (approx. 21% ) — rafter length: up to 7 m  
14° (approx. 25% ) — rafter length: 7–12 m  
16° (approx. 29% ) — rafter length: over 12 m
- **Supporting substrate and separation layer\***  
On fully boarded substrate (at least 24 mm) or battens (30 × 50 mm); with snow loads greater than 3.25 kN/m<sup>2</sup> or in terrain categories 0, I or II, fully boarded substrate with a separation layer is required.
- **Standard fastening**  
indirect fastening, 2 PREFA patent clips and PREFA ring nails per roof tile (i.e. 8 PREFA patent clips and ring nails per m<sup>2</sup>)

\* Observe country-specific standards and specialist guidelines.







Product: R.16 roof tile  
Colour: P.10 light grey  
Location: Alipago (Italy)  
Architectural design: Ing. Ivo Fagherazzi  
Installed by: Polito Ilario

## R.16 ROOF TILE



Simple, straightforward, large format

The R.16 roof tile ensures a minimalist and elegant roof design and gives architects and designers the greatest possible scope. Not only is it easy on the eye, it's also quick to install. Thanks to the length of the R.16 roof tile, it's now possible to cover roofs with 3.4 tiles per square metre while at the same time achieving stunning effects.

### DIRECTLY FIXED, NO ADDITIONAL CLIPS REQUIRED

The R.16 roof tile can be installed from a roof pitch of 17°. Weighing only 2.5 kg/m<sup>2</sup>, it really is very lightweight. Its outstanding feature: the tile is fastened directly to the integrated fastening strip which also facilitates speedy installation for the roofer.



P.10 anthracite

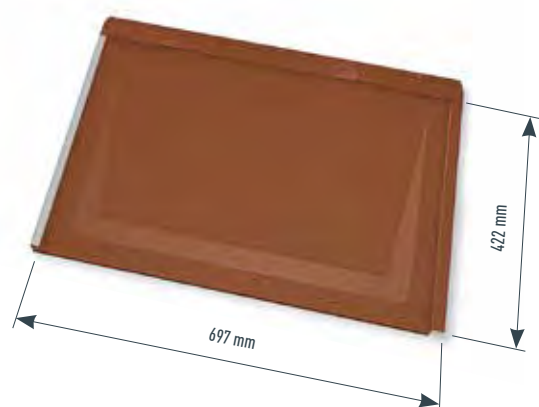


Product: R.16 roof tile  
 Colour: P.10 anthracite  
 Location: Kirchbach (Austria)  
 Architectural design: Christoph Faltner  
 Installed by: Ledstätter GmbH

ROOF

## AVAILABLE IN TEN STANDARD COLOURS

The R.16 roof tile is available in ten standard colours in P.10 quality with a stucco surface. A smooth finish can also be ordered on request. The surface is UV-resistant, colour-fast and weatherproof.



## TECHNICAL DATA — R.16 ROOF TILE



- Material  
coil-coated aluminium, 0.7 mm thick
- Standard finish  
stucco
- Dimensions  
700 × 420 mm (cover), i.e. 3.4 pc./m<sup>2</sup>
- Weight  
approx. 2.5 kg/m<sup>2</sup>
- Minimum roof pitch  
17° (approx. 31 %)

- Supporting substrate and separation layer\*  
On fully boarded substrate (at least 24 mm), a separation layer is required for roof pitches between 17° and 25°; with snow loads greater than 3.25 kN/m<sup>2</sup> or in terrain categories 0, I or II, fully boarded substrate with a separation layer is required.
- Standard fastening  
direct fastening, 3 PREFA ring nails per R.16 roof tile (i.e. 10 PREFA ring nails per m<sup>2</sup>)

\* Observe country-specific standards and specialist guidelines.







Product: DS.19 shingle

Colour: P10 brown

Location: Vienna (Austria)

Installed by: Larisch Dachdesign | Kanzler Dach

## DS.19 SHINGLE



### Large format, lightweight and practical installation

The DS.19 shingle sets new standards where format and application area are concerned. It can be installed from a roof pitch of 17°, and at 480 × 262 mm, is larger than the classical shingle. This format enables faster and more efficient installation; only eight DS.19 shingles are required per square metre. Weighing only 2.75 kg/m², the DS.19 shingle is also extremely lightweight. The tried and tested flat lock system is not only storm-proof but also extremely weather-resistant.



Product: DS.19 shingle

Colour: P10 anthracite

Location: Waldstetten (Germany)

Installed by: Zolynski Baufachservice GmbH

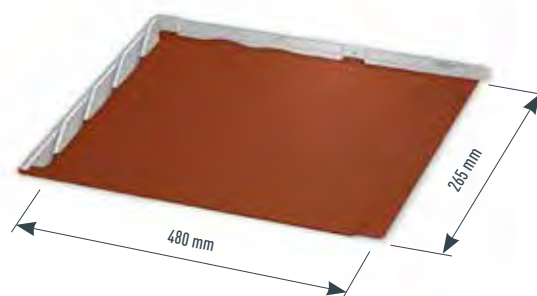




Product: DS.19 shingle  
Colour: P.10 oxide red  
Location: Tünnitz (Austria)

## CLASSIC-TRADITIONAL OR MODERN ARCHITECTURE

From an aesthetic point of view, the shingles are suitable for classic-traditional roof structures, but they can also be used to create exciting contrasts in modern architecture too. The DS.19 shingle with a stucco finish is available in the ten standard colours. A smooth finish is also possible on request.



## TECHNICAL DATA — DS.19 SHINGLE



- **Material**  
coil-coated aluminium, 0.7 mm thick
- **Standard finish**  
stucco
- **Dimensions**  
480 × 262 mm (cover), i.e. 8 pc./m<sup>2</sup>
- **Weight**  
approx. 2.75 kg/m<sup>2</sup>
- **Minimum roof pitch**  
17° (approx. 31 %)
- **Supporting substrate and separation layer\***  
On fully boarded substrate (at least 24 mm), a separation layer is required for roof pitches between 17° and 25°; with snow loads greater than 3.25 kN/m<sup>2</sup> or in terrain categories 0, I or II, fully boarded substrate with a separation layer is required.
- **Standard fastening**  
indirect fastening, 1 PREFA patent clip and ring nail per DS.19 shingle (i.e. 8 PREFA patent clips and ring nails per m<sup>2</sup>)

\* Observe country-specific standards and specialist guidelines.







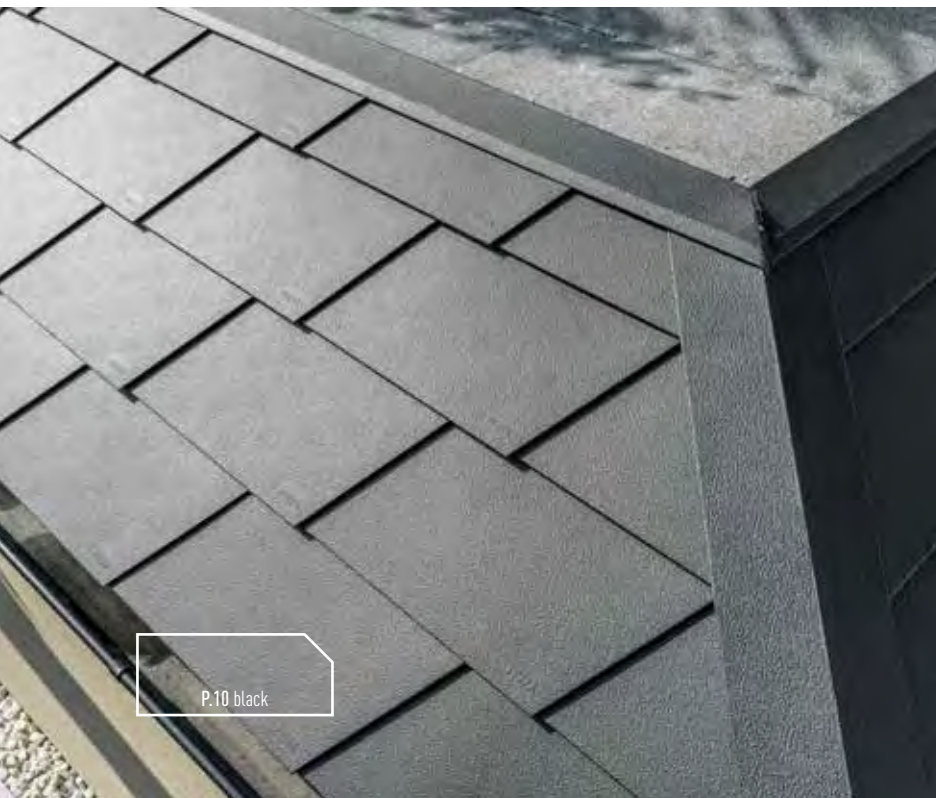
Product: shingle  
Colour: P.10 stone grey  
Location: St. Veit im Mühlkreis (Austria)  
Installed by: HOFA Service GmbH

## SHINGLE



As though tailor-made for each project

With the PREFA shingle, the rhombus shape which has been tried and tested thousands of times over, is combined with the high-tech material, aluminium. This makes it the ideal product for classic-traditional roof designs as well as for modern buildings.



### FLAT LOCK SYSTEM AND CONCEALED FASTENING

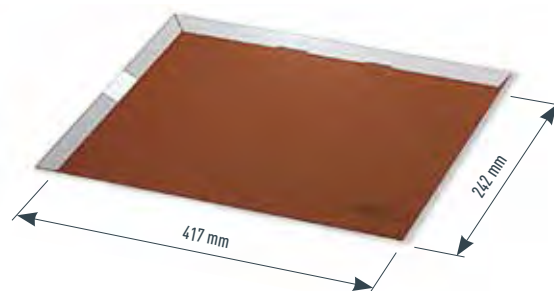
The small format, particularly light-weight shingle shows its strengths whether used on the smallest surfaces or in large-scale projects, and on new roofs or roof renovations. Through the flat lock system and concealed fastening, the shingle is not only storm-proof but also weather-resistant. Flat lock welts on all four sides guarantee the necessary reliability, ensuring a weatherproof and tight fit on your roof.



Product: shingle  
 Colour: P.10 nut brown  
 Location: Gamitz (Austria)  
 Architectural design: Viereck Architekten ZT GmbH  
 Installed by: A. Leopold GmbH

## ELEGANT, MATT DESIGN AVAILABLE IN MANY COLOURS

The shingle with a stucco finish is available in the ten standard colours. The broad choice of colours ensures attractive and harmonious roof surfaces. Seams on the lengthwise and transverse sides guarantee the necessary reliability, and ensure a sealed, weatherproof fit.



## TECHNICAL DATA — SHINGLE



- Material  
coil-coated aluminium, 0.7 mm thick
- Standard finish  
stucco
- Dimensions  
420 × 240 mm (cover), i.e. 10 pc./m<sup>2</sup>
- Weight  
approx. 2.5 kg/m<sup>2</sup>
- Minimum roof pitch  
25° (approx. 47%)

- Supporting substrate and separation layer\*  
On fully boarded substrate (at least 24 mm); with snow loads greater than 3.25 kN/m<sup>2</sup> or in terrain categories 0, I or II, fully boarded substrate with a separation layer is required.
- Standard fastening  
indirect fastening, 1 PREFA patent clip and ring nail per roof and façade shingle (i.e. 10 PREFA patent clips and ring nails per m<sup>2</sup>)

\* Observe country-specific standards and specialist guidelines.



**Product:** rhomboid roof tile 44 × 44  
**Colour:** P.10 light grey  
**Architectural design:** Illichmann Architecture  
**Installed by:** Dachdeckerei und Spenglerei Rudolf Wukisevits e.U.



## RHOMBOID ROOF TILE 44 × 44



### A fresh interpretation of familiar patterns

PREFA's rhomboid roof tiles give roofs and façades an elegant “scaly” appearance with distinctive accents. So every building is unique and full of character. Thanks to the perfectly coordinated system and the low weight, the rhomboid tiles can be used problem-free on new roofs and renovations. The 0.7 mm thick coil-coated aluminium and the proven flat lock technology ensure maximum durability and extreme weather resistance.

**Product:** rhomboid roof tile 44 × 44  
**Colour:** P.10 moss green  
**Location:** Ansfelden (Austria)  
**Installed by:** DACH + WAND Kiesenhofer u. Grilberger Ges.m.b.H.

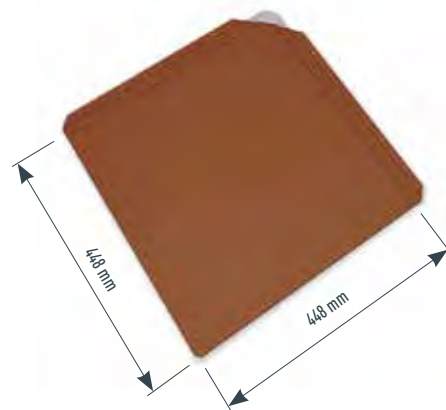




**Building:** Rigi-Scheidegg aerial cable car stations  
**Product:** PREFA rhomboid roof tile 44 × 44, PREFA rhomboid façade tile 44 × 44  
**Colour:** P.10 stone grey  
**Location:** Rigi (Switzerland)  
**Architectural design:** Wulschleger Möller Architekten AG  
**Installed by:** Anton Ulrich GmbH  
 building-related special solution

## RHOMBROID ROOF TILE 44 × 44

The large format of the rhomboid roof tile 44 × 44 gives the building a particularly elegant and modern appearance. Weighing only 2.6 kg/m<sup>2</sup>, it is not only extremely lightweight, but the integrated fastening strips also facilitate speedy and inexpensive installation. Only approx. five elements are required for one square metre. This also saves time. Through the flat lock system and concealed fastening, the rhomboid roof tile 44 × 44 is not only extremely storm-proof but also weather-resistant, ensuring a weathertight, tight fit.



### TECHNICAL DATA — RHOMBROID ROOF TILE 44 × 44



- **Material**  
coil-coated aluminium, 0.7 mm thick
- **Standard finish**  
stucco
- **Dimensions**  
437 × 437 mm (cover), i.e. approx. 5 pc./m<sup>2</sup>
- **Weight**  
approx. 2.6 kg/m<sup>2</sup>
- **Minimum roof pitch**  
12° (approx. 21% ) — rafter length: up to 7 m  
14° (approx. 25% ) — rafter length: 7–12 m  
16° (approx. 29% ) — rafter length: over 12 m
- **Supporting substrate and separation layer\***  
On fully boarded substrate (at least 24 mm); with snow loads greater than 3.25 kN/m<sup>2</sup> or in terrain categories 0, I or II, fully boarded substrate with a separation layer is required.
- **Standard fastening**  
direct fastening, 4 PREFA ring nails per rhomboid roof and façade tile 44 × 44 (i.e. 20 PREFA ring nails per m<sup>2</sup>)

\* Observe country-specific standards and specialist guidelines.







**Product:** rhomboid roof tile 29 × 29  
**Colour:** P.10 light grey  
**Location:** Ingolstadt (Germany)  
**Installed by:** Spenglerei Paul Huber  
building-related special solution

## RHOMBOID ROOF TILE 29 × 29



### A fresh interpretation of familiar patterns

PREFE's rhomboid roof tiles give roofs and façades an elegant “scaly” appearance with distinctive accents. So every building is unique and full of character. Thanks to the perfectly coordinated system and the low weight, the rhomboid tiles can be used problem-free on new roofs and renovations. The 0.7 mm thick coil-coated aluminium and the proven flat lock technology ensure maximum durability and extreme weather resistance.



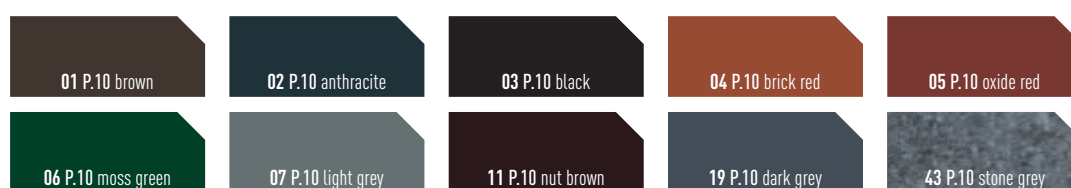
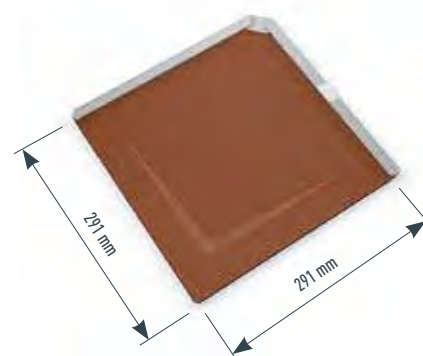
**Product:** rhomboid roof tile 29 × 29  
**Colour:** P.10 anthracite  
**Location:** Poljane nad Škofjo Loko (Slovenia)  
**Installed by:** Martinčič Borut s.p.



Product: rhomboid roof tile 29 × 29  
 Colour: P.10 oxide red  
 Location: Muhldorf (Austria)  
 Installed by: City Dach

## RHOMBOID ROOF TILE 29 × 29

The roof and façade tile 29 × 29 is the perfect combination of style and function. With its dimensions of 290 × 290 mm, it falls within the medium range and can therefore be used flexibly. The ridged edge of the rhomboid roof tile creates a one-of-a-kind, striking appearance.



### TECHNICAL DATA — RHOMBOID ROOF TILE 29 × 29



- Material  
coil-coated aluminium, 0.7 mm thick
- Standard finish  
stucco
- Dimensions  
290 × 290 mm (cover), i.e. 12 pc./m<sup>2</sup>
- Minimum roof pitch  
22° (approx. 40%)
- Weight  
approx. 2.6 kg/m<sup>2</sup>
- Supporting substrate and separation layer\*  
On fully boarded substrate (at least 24 mm); with snow loads greater than 3.25 kN/m<sup>2</sup> or in terrain categories 0, I or II, fully boarded substrate with a separation layer is required.
- Standard fastening  
indirect, 1 PREFA rhomboid roof tile clip as well as 1 ring nail per rhomboid roof tile 29 × 29 (i.e. 12 PREFA rhomboid roof tile clips as well as 12 ring nails per m<sup>2</sup>)

\* Observe country-specific standards and specialist guidelines.







Product: FX.12 roof panel

Colour: special colour

Location: Aesch (Switzerland)

Architectural design: Burckhardt+Partner AG

Installed by: Korporation Spenglerei Martin Borer + Camille Wohlgemuth

## FX.12 ROOF PANEL



### Vibrant light and shade effects

PREFA's FX.12 roof panels are innovative design elements which enable particularly futuristic surfaces to be created with their geometric designs. The appearance differs depending on how the light falls, making every building unique. The use of two different panel dimensions (small and large) further enhances the asymmetrical, one-of-a-kind look.

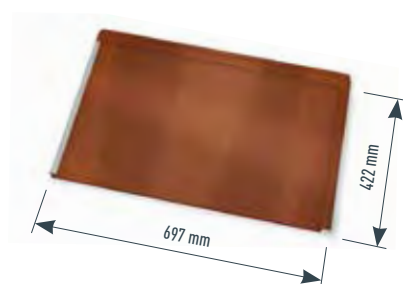
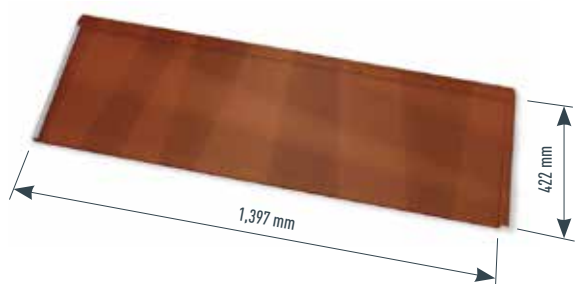
### A CLEVER DESIGN ENSURES GREATER STABILITY

The geometric surface design has an even more important role: it reinforces the panels, ensuring even greater resistance. The tapered standing seam absorbs any lateral expansion. The panels are installed using the integrated fastening strip without requiring additional clips. The FX.12 roof panels are available in ten standard colours.





Product: FX.12 roof panel  
 Colour: P.10 brown  
 Location: St. Marein bei Graz (Austria)  
 Architectural design: Architekturbüro Meier  
 Installed by: Josef Kleissner GmbH



## TECHNICAL DATA — FX.12 ROOF PANEL



- **Material**  
coil-coated aluminium, 0.7 mm thick
- **Dimensions**  
700 × 420 mm (cover), i.e. 3.4 pc./m<sup>2</sup>  
1,400 × 420 mm (cover), i.e. 1.7 pc./m<sup>2</sup>
- **Weight**  
approx. 2.4–2.5 kg/m<sup>2</sup>
- **Minimum roof pitch**  
17° (approx. 31 %)
- **Supporting substrate and separation layer\***  
On fully boarded substrate (at least 24 mm), a separation layer is required for roof pitches between 17° and 25°; with snow loads greater than 3.25 kN/m<sup>2</sup> or in terrain categories 0, I or II, fully boarded substrate with a separation layer is required.
- **Standard fastening**  
direct, with 3 PREFA ring nails per small FX.12 roof panel, with 5 PREFA ring nails per large FX.12 roof panel (i.e. 8–10 PREFA ring nails per m<sup>2</sup>)

\* Observe country-specific standards and specialist guidelines.







Product: PREFALZ  
Colour: P10 zinc grey  
Location: Augsburg (Germany)  
Installed by: Holzbau Wohlfürter GmbH

## PREFALZ



### A combination of malleability, elegance and infinite design possibilities

PREFALZ offers numerous colour and shape possibilities. Thanks to the aluminium material, it is more supple than most comparable folding materials and therefore particularly easy to form. From barrel roofs to complex roof extensions, domes or large-scale roofs — PREFALZ offers architects countless individual design options that would hardly be possible with any other material. Folds and bends won't affect the paint quality at all. PREFALZ is supplied in a total of 18 colours and in plain aluminium with a smooth or stucco surface, as required.

#### FOR LOW PITCHED ROOFS WITH A ROOF PITCH FROM 3°

Roofs designed with PREFALZ have the highest stability and durability. PREFALZ is suitable for very low roof pitches\* from 3° and can also be installed well even in low temperatures. Rainproof joints can be easily achieved thanks to the concealed, invisible fastening.



\* Observe country-specific standards and specialist guidelines.



Product: PREFALZ  
Colour: P.10 anthracite  
Location: Flavon (Italy)  
Architectural design: Karl Heinz Castlunger  
Installed by: LGC Lattneria Gasperetti Claudio

## TRULY LIGHTWEIGHT

With its low weight of between 2.2 and 2.3 kg/m<sup>2</sup>, depending on the tray width, PREFALZ is suitable for conversions of both old and new buildings, and can be expanded with the wide range of PREFA system accessories.



01 P.10 brown	02 P.10 anthracite	03 P.10 black	04 P.10 brick red	05 P.10 oxide red	06 P.10 moss green
07 P.10 light grey	08 P.10 zinc grey	10 P.10 PREFA white	11 P.10 nut brown	12 metallic silver	13 plain aluminium
17 P.10 pure white	19 P.10 dark grey	23 black grey	43 P.10 stone grey	45 bronze	46 P.10 patina green
47 patina grey					

## TECHNICAL DATA — PREFALZ



- Material  
coil-coated aluminium, 0.7 mm thick
- Standard dimensions  
PREFALZ for roofs: 0.7 × 500 mm; 0.7 × 650 mm  
complementary coil: 0.7 × 1,000 mm
- Weight  
approx. 1.89 kg/m<sup>2</sup>  
actual consumption with PREFALZ 500: approx. 2.3 kg/m<sup>2</sup>  
actual consumption with PREFALZ 650: approx. 2.2 kg/m<sup>2</sup>
- Minimum roof pitch\*  
3° (approx. 5%)
- Supporting substrate and separation layer\*  
on fully boarded substrate (at least 24 mm); separation layer as required
- Fastening  
PREFA preformed fixed and long sliding clips (stainless steel) according to static requirements

\* Observe country-specific standards and specialist guidelines.







Product: PREFALZ  
Colour: P.TU light grey  
Location: Kvasószks (Hungary)  
Architectural design: Dr. Bachman Zoltán, Borsos Agnes  
Installed by: Akos Stang  
building-related special solution

## FALZONAL®

### THE RIGHT MATERIAL FOR HIGH DESIGN EXPECTATIONS

In terms of alloy, strength and coating, FALZONAL®, the colour aluminium strip, has been specially tailored for applications using sheet metal techniques. It is perfectly suited to the widest variety of folding techniques and can be individually combined with materials such as wood and glass. The material is easy to work with and at the same time is highly resilient.

### AVAILABLE IN MANY COLOURS FROM COPPER TO TITANIUM

FALZONAL® is available in a wide range of colours and surfaces with plain or metallic colours including copper, zinc or titanium shades. The PVDF coating (80/20) is UV-resistant and environmentally sound.



**Product:** PREFALZ  
**Colour:** P.10 PREFA white  
**Location:** Versailles (France)  
**Architectural design:** Agence d'architecture Construire  
**Installed by:** Glot Couverture  
 building-related special solution

ROOF

## FALZONAL® COLOUR RANGE

weathered clear varnish	standard pure white	tin grey	zinc grey	matt light zinc	matt light grey
anthracite grey	matt dark grey	anodic brown	Victorian brick red	copper brown	coffee brown
reseda green	light ivory	dusty blue	opal green	grey-green	quartz grey
pearl white	savannah beige	pastel turquoise	broom yellow	crimson	turquoise blue
mint green	olive green	azure blue	light grey	gentian blue	carbon black
bright metallic	grey aluminium	light bronze	new copper	maya gold	

## TECHNICAL DATA — FALZONAL®



- **Material**  
coil-coated aluminium, 0.7 mm thick
- **Standard dimensions**  
0.7 × 600 mm  
complementary coil: 0.7 × 1,200 mm
- **Weight**  
approx. 1.89 kg/m<sup>2</sup>  
actual consumption with FALZONAL® 600: approx.  
2.19 kg/m<sup>2</sup>
- **Minimum roof pitch\***

3° (approx. 5%)

- **Supporting substrate and separation layer\***  
on fully boarded substrate (at least 24 mm); separation layer  
as required
- **Fastening**  
PREFA preformed fixed and long sliding clips (stainless steel)  
according to static requirements

\* Observe country-specific standards and specialist guidelines.





# PREFA ORIGINAL ACCESSORIES

Systematic quality right down to the last detail



PREFA's products stand for strength and safety — and that applies for generations. The individual components work together perfectly to ensure safety, and thanks to their accuracy of fit and high quality, they guarantee the durability that a PREFA complete system strives to obtain. This includes not only the main products (roof and façade systems), but original PREFA accessories too.

## ACCESSORIES FOR ROOF SYSTEMS



## SNOW GUARD SYSTEM



## ROOF SAFETY



## LIGHTNING PROTECTION



## SOLAR PANEL MOUNTING SYSTEM

Solar panel mounting system







Product: shingle  
Colour: P10 stone grey  
Location: St. Veit im Mühlkreis (Austria)  
Installed by: HOFA Service GmbH

## EVERY SINGLE PART FROM ONE SOURCE

All the individual components of PREFA's accessories and additional items are manufactured from a single source and delivered together. For example, the necessary mounting accessories are included with all the accessories. This ensures that all parts match perfectly and the result meets the highest demands in terms of both appearance and quality. To ensure a perfect installation, PREFA products should only be installed by trained professionals. This gives clients and designers maximum security.

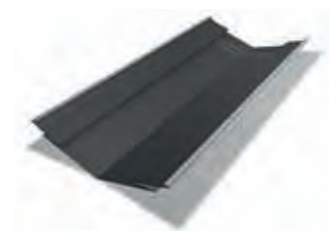
### PATENT CLIP FOR ROOF TILES AND SHINGLES

Thanks to its well thought-out shape, the PREFA fastening system, which has been tried and tested for many years, enables uncomplicated installation. Bending the top edge of the clip prevents it from getting caught on the sheathing or separation layer. Correctly positioned ridges also prevent capillary action.



### SAFETY VALLEY

The PREFA safety valleys, with anti-capillary grooves in the cross-welt area, are also suitable for use in snowy regions. The additional joint ensures greater protection against backflow. Tapered canting in the overlap area facilitates mounting.



### RIDGE VENT

The special slim design of the PREFA ridge vent ensures extremely good ventilation and functionality. It can be used on the hip and also on the ridge with all small format PREFA products.



# SNOW GUARD SYSTEM

## SNOW GUARD

Suitable snow guards exist for all small-format PREFA roof products. They are distributed over the entire roof surface to prevent snow from slipping off. The number of snow guards required and the way in which they are arranged depends on the potential snow load and the roof pitch.



## REMOVABLE PIPES FOR THE PIPE-STYLE SNOW GUARD SYSTEM

The PREFA pipe-style snow guard system can be used on roof tiles, R.16 roof tiles, roof shingles, DS.19 shingles, rhomboid roof tiles and FX.12 roof panels. The greatest advantage of the new pipe-style snow guard system is that it is easy to install. The pipe-style snow guard system can also be retrofitted and is available in all standard colours.



## SEAM CLAMPS

The snow guard system for clamping on to double-lock standing seams (PREFALZ and FALZONAL®) offers maximum security and has no influence on the expansion of the roof covering. Ribbing gives the system a better grip on the seam and delivers high static values. The PREFA seam clamp is available in three different versions.



## MOUNTAIN SNOW GUARD

Logs are inserted into the supports of the PREFA mountain snow guard, giving them a rustic look. The system can either be combined with snow guards—in which case, only one row of mountain snow guards is used on the eaves—or it can be arranged in several rows, with PREFA calculating the requirements accordingly. The hooks on the mountain snow guard have excellent static values, and the system is attached on the PREFA small format products via the tried and tested mounts.



mountain snow guard bracket







## ROOF SAFETY

---

Roof safety is a top priority for PREFA.

Carrying out work on roofs is one of the most dangerous construction activities that exists. That's why roof safety is a top priority for PREFA. Various, technically well-thought-out elements support skilled workers during assembly and repair, as well as the owners when cleaning, and ensure professional protection.

### ROOF ANCHOR HOOK SDH

The roof anchor hooks on mounts, which have been tested in all fall directions, are suitable for all small format PREFA products. The mount enables easy installation. The roof anchor hooks have been tested for mounting on above-rafter insulation. Suitable roof anchor hooks are also available for double-lock standing seams.



roof anchor hook for small format products

### SAFETY TREADS, WALKWAYS AND WALKWAY SUPPORTS

Safety treads, walkways and walkway supports are designed to enable roofers to move about safely on the roof covering. They are mostly used when there are technical installations on the roof surface which need to be accessed regularly. For example, for the purpose of performing maintenance on solar panels and solar thermal systems or to provide access for a chimney sweep to carry out inspections. The tried and tested mounts are used for the walkways and safety treads. In the case of the walkway supports for PREFALZ, the supports are clamped on to the seals.



safety tread

Product: rhomboid roof tile 44 x 44  
Colour: P10 stone grey  
Location: Livo TN (Italy)  
Architectural design: Ao7 Studio  
Installed by: Adriano Busetti  
building-related special solution

## LIGHTNING PROTECTION

According to standards, PREFA products are “natural” components of an arresting device.

No other weather phenomenon impresses us as much or instils such great respect in us as a thunderstorm. To be able to enjoy the natural spectacle of lightning and thunder without fearing for the safety of your building, appropriate protection must be provided.

### THE TOP PART OF THE BUILDING SHELL ACTS AS A KIND OF LIGHTNING CONDUCTOR

High-quality aluminium roofs such as those made by PREFA play an important role in this respect. If lightning is going to strike a building, it usually does so in exposed places, i.e. anywhere where more highly positioned corners and edges stick out. It is therefore all the more important for the top part of the building shell to act as a kind of lightning conductor.

### NATURAL COMPONENT OF THE SYSTEM

According to the standard EN 62305-3, metal roofs are a “natural” component of a lightning protection system. PREFA coil materials (PREFALZ and FALZONAL®) are permitted for use as a natural component of the arresting device, and PREFA small-format products (roof tiles, shingles, roof panels and rhomboid roof tiles) as a natural component of the lightning protection system (mounting of an additional arresting device and connection to earth).

### ASSESSED ACCORDING TO STANDARDS

Information about the need for, and type of, lightning protection system required by a building can be obtained from a lightning protection system manufacturer or a licensed electrician, authorized both for the installation, and for the legally stipulated acceptance of the lightning protection system. Also ask around in your local community about any additional provisions which depend on the specific location.

The suitability of PREFA products as natural components of a lightning protection system must therefore be assessed on a project-specific basis in accordance with the standards to be taken into account.



roof conductor holder for lightning protection wire



Product: roof tile, PS 13 mounting system  
Colour: anthracite  
Location: Wilhelmsburg (Austria)



## SOLAR PANEL MOUNTING SYSTEM



Get your roof working for you.

Solar energy is not just one of the most environmentally-friendly forms of energy, but it also saves the owner money. When solar panels are used, valuable raw materials are not consumed and harmful carbon dioxide is not released into the atmosphere.

### SOLAR PANEL MOUNTING SYSTEM

With the solar product range, PREFA offers a sophisticated solution that perfectly matches the roof covering. In comparison with many other fasteners for solar panels, this system does not restrict the function or durability of PREFA roofing. Thanks to ongoing further development, the mounting system always remains at the cutting edge of technology. The right kind of fastener is available for every PREFA roof system — from small format products to PREFALZ standing seams. Safety comes first, which is why advice is provided only by trained sales partners and supporting substrate calculations are carried out exclusively using PREFA application technology. Assembly is also only carried out by professional, skilled workers.

### PREFA SOLAR PANEL MOUNTING SYSTEM

1. Vario solar bracket
2. Vario PREFALZ solar bracket
3. Sunny solar bracket





## THE PERFECT SOLUTION FOR STRONG ROOFS

If you rely on renewable energy,  
you ought to rely on the highest quality too.

### GOOD REASONS FOR CHOOSING A PREFA MOUNTING SYSTEM

- Top PREFA quality and service thanks to an extensive network of professional roofers.
- One mounting system for all PREFA products.
- Quick and easy assembly with standard tools.
- Advice from trained partners and professional calculations using PREFA technology ensure safety.
- Always at the cutting edge of technology thanks to ongoing developments.
- Made in Austria! Our experience on the roof will secure your energy in the future.
- Long service life, long-term value.







QUALITY  
FROM AUSTRIA  
since 1946

# PREFA ROOF DRAINAGE

Guaranteed rust-free even after many years



PREFA offers a complete aluminium roof drainage system including mounting accessories from one supplier — from half-round gutters to square downpipes, and from strainers to leader heads. The system that has been tried and tested for years will win you over with its well-thought-out, detailed technical solutions. The PREFA drainage system is mainly made of aluminium so it is guaranteed to remain rust-proof, fully functional and attractive even after many years. Even tedious maintenance work such as touching up or repainting is not an issue with PREFA's high-quality coatings.

### **NOW ALSO AVAILABLE IN P.10 QUALITY: ANTHRACITE, BROWN, DARK GREY, LIGHT GREY, NUT BROWN, PREFA WHITE AND BLACK**

The system is available in the classic standard colours to match the roof and façade elements. In this way, elegant tone-in-tone solutions or deliberate colour accents can be created. In addition to the colours anthracite, brown and light grey, the colours dark grey, nut brown, PREFA white and black are available in P.10 quality.

### **ENVIRONMENTALLY-FRIENDLY AND POLLUTION FREE**

The PREFA aluminium drainage system is the best choice from an ecological point of view too. This is because aluminium does not release harmful heavy metal ions into the sewage water when gutters and pipes are constantly flushed out with rainwater, as is the case with conventional materials. Aluminium can be recycled as often as necessary without loss of quality. And what's the best thing about that? The manufacture of secondary aluminium requires 95 % less energy than that required to obtain primary aluminium. Aluminium's light weight (less transport and construction site times) and durability (does not break, rust or freeze) also ensure its sustainability.

### **HIGHLY WEATHER-RESISTANT EVEN IN EXTREME CONDITIONS**

The gutters are produced from colour-coated aluminium coils. Thanks to the high-quality surface treatment in a coil-coating process, the paint layer remains malleable and highly resistant, even under extreme weather conditions.



\* The colour guarantee ensures that the P.10 painted surface is protected from chips and blistering under the terms specified in the guarantee certificate.

## **GUTTERS AND DOWNPIPES**

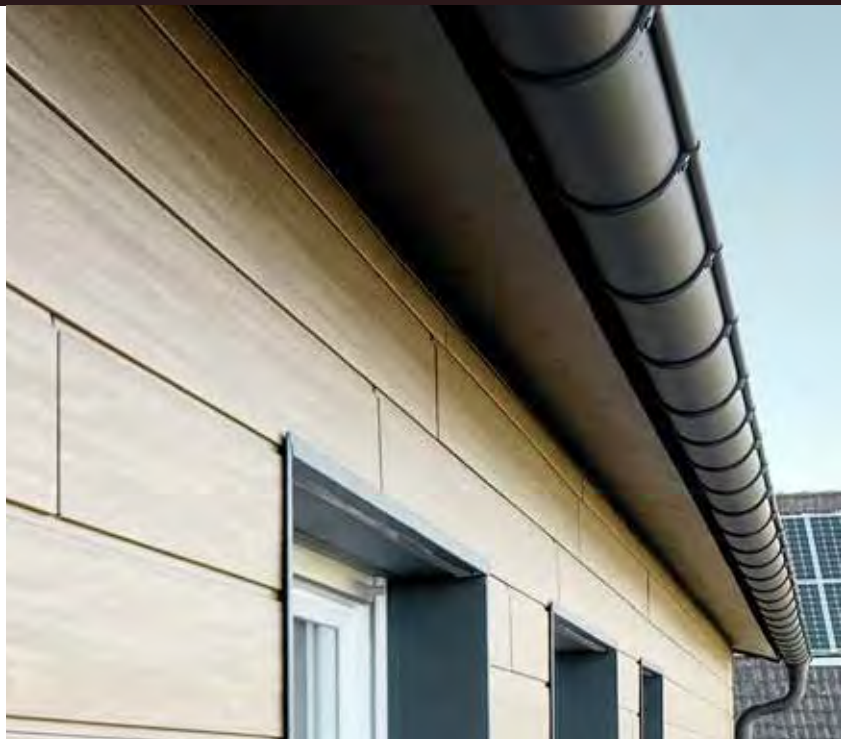
half-round gutter  
box gutter  
on-roof gutter  
downpipe



## **BOX GUTTER AND SQUARE DOWNPIPE**







## GUTTERS AND DOWNPIPES



With well-thought-out, detailed technical solutions

### HALF-ROUND GUTTER



Half-round gutter 250  
Half-round gutter 280  
Half-round gutter 333  
Half-round gutter 400

### BOX GUTTER



Box gutter 250  
Box gutter 333  
Box gutter 400  
Box gutter 500\*

### ON-ROOF GUTTER



700 mm on-roof gutter

### DOWNPIPE



ø 60 mm downpipe  
ø 80 mm downpipe  
ø 100 mm downpipe  
ø 120 mm downpipe  
ø 150 mm downpipe\*

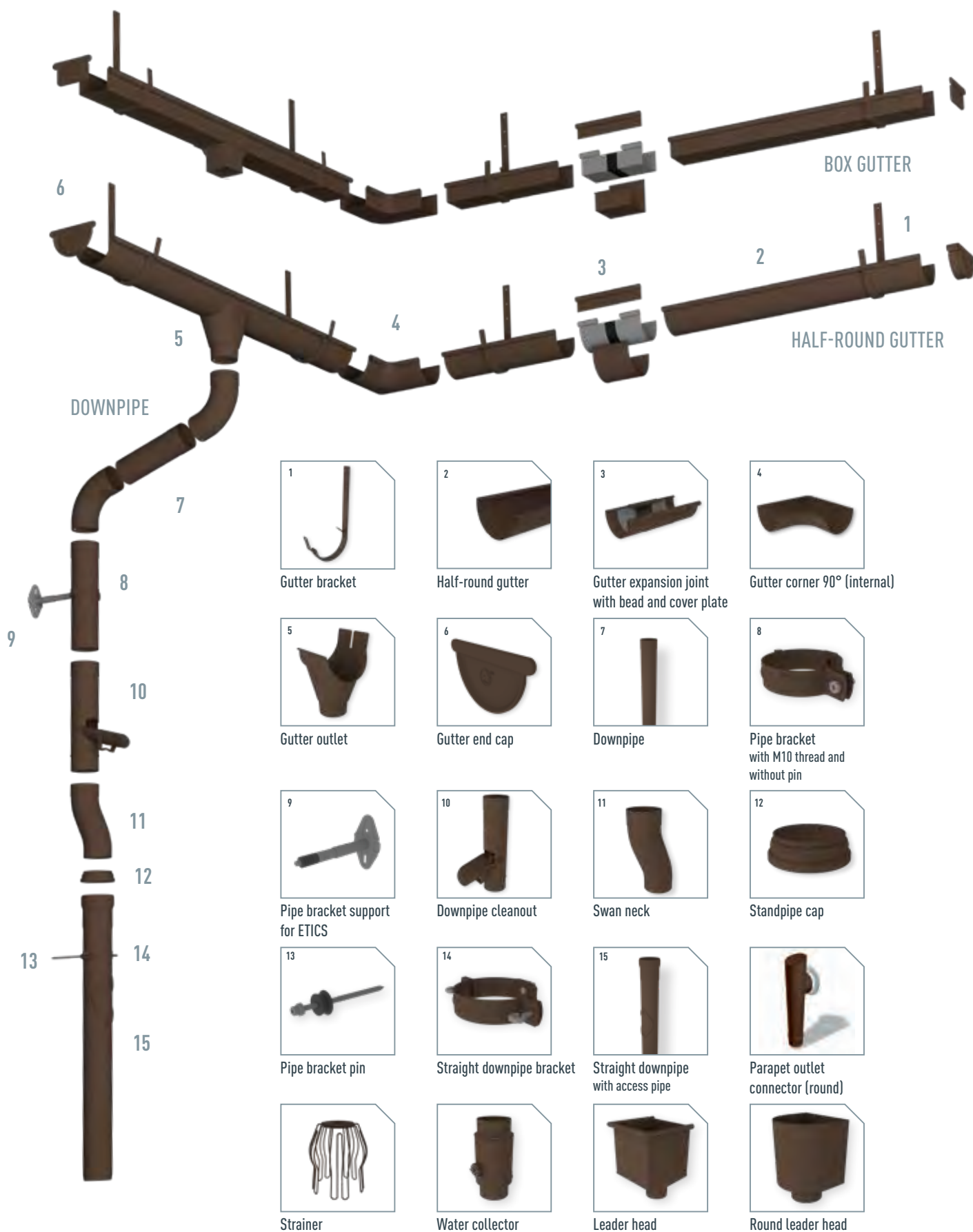
\* not available in P.10

## TIP FROM THE EXPERTS!

### DOWNPIPE WITH A ROBUST DESIGN (1.6 mm-thick)

Almost three metres in length and designed in 1.6 mm-thick aluminium (ø 100 mm), these downpipes offer two decisive product advantages: thanks to their particularly high resistance, they are ideal for installing in the driveway, garden or public areas as they cannot get dented, for example, by children playing, or by falling objects. Their length also gives them a visual advantage as no fasteners are required at eye level or in the direct field of vision. This functional detail creates an elegant impression, especially on modern detached houses as it allows the roof drainage system to fade discreetly into the background when tone-in-tone solutions are used to match the colour of the façade.





This is a representative selection of products.  
Other matching accessories are also available.





## BOX GUTTER AND SQUARE DOWNPIPE



### Modern roof drainage for minimalist architecture

The square complete system in an elegant minimalist design is perfect for modern buildings. Drains can be perfectly integrated into the architecture, embellishing any building. Through brackets on the rear side, the square down pipe skilfully blends into the façade without any visible fasteners.

#### BOX GUTTER

Box gutter 250

Box gutter 333

Box gutter 400

Box gutter 500\*

\* not available in P.10



#### SQUARE DOWNPIPE

Side length: 100 mm

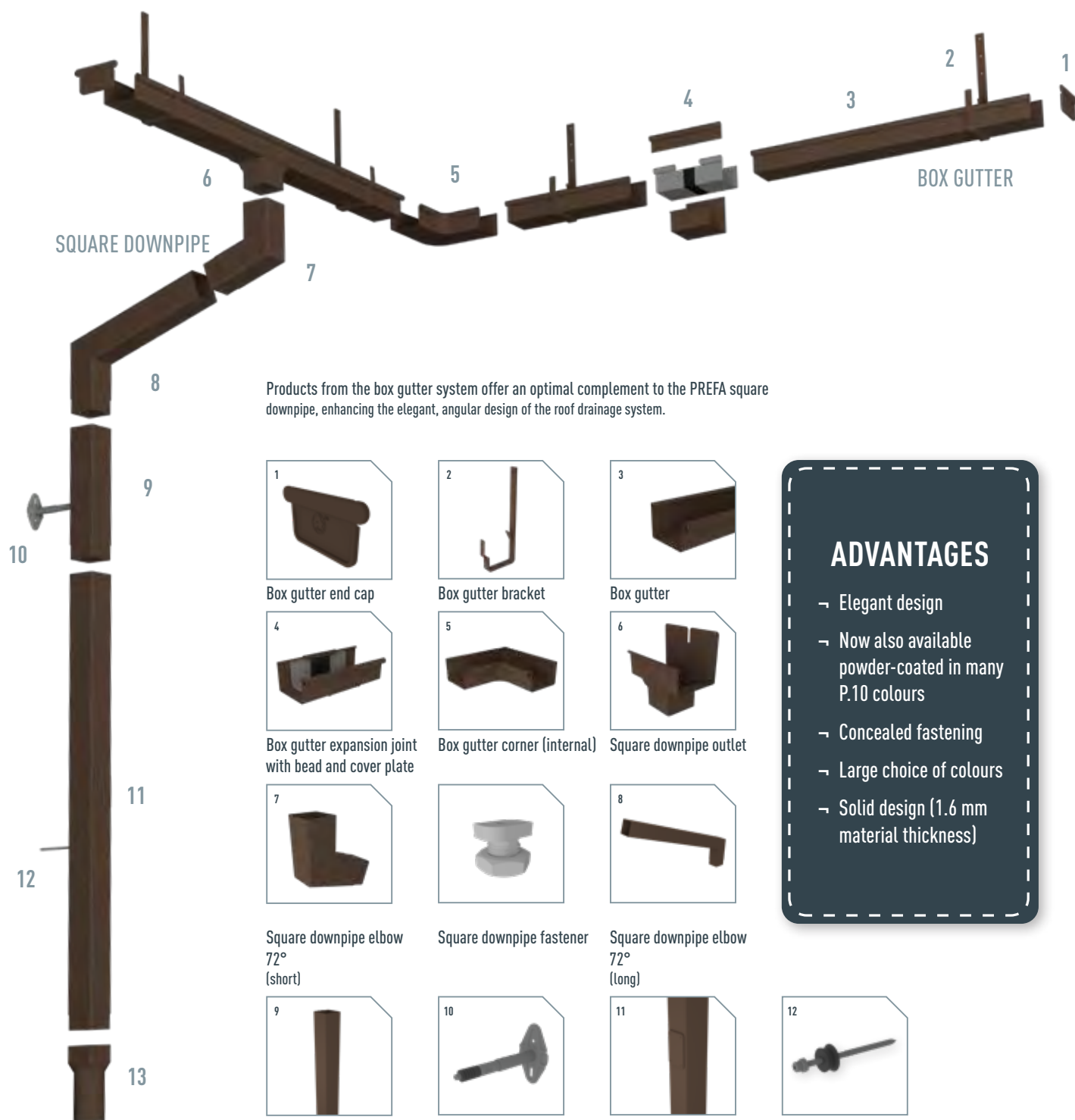
Material thickness: 1.6 mm

Lengths: 3,000 mm, 1,500 mm, 600 mm



### ROBUST DESIGN

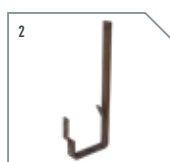
The PREFA square downpipe system is made up of various coordinated components such as square downpipes with radii corresponding to the box gutters, two different downpipe elbows with a 72° bend, parapet outlet connectors and leader heads with a square bead and outlet. The innovative aluminium products are outstanding due to their robust design. Take, for example, the square downpipe with a side length of 100 mm, made of 1.6-mm thick extruded profiles and equipped with a continuous fixing rail for fasteners.



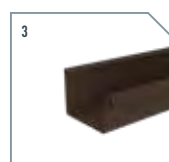
Products from the box gutter system offer an optimal complement to the PREFA square downpipe, enhancing the elegant, angular design of the roof drainage system.



Box gutter end cap



Box gutter bracket



Box gutter



Box gutter expansion joint with bead and cover plate



Box gutter corner (internal)



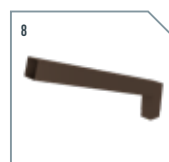
Square downpipe outlet



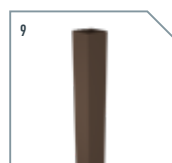
Square downpipe elbow 72° (short)



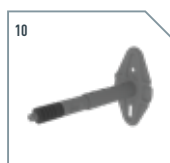
Square downpipe fastener



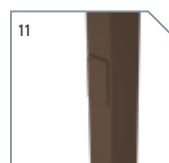
Square downpipe elbow 72° (long)



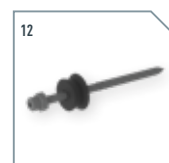
Square downpipe



Pipe bracket support for ETICS



Square downpipe with access pipe



Pipe bracket pin



Square-to-round adapter



Square downpipe lightning protection clamp with fastening clamp



Square downpipe leader head



Parapet outlet square downpipe connector

## ADVANTAGES

- Elegant design
- Now also available powder-coated in many P.10 colours
- Concealed fastening
- Large choice of colours
- Solid design (1.6 mm material thickness)

This is a representative selection of products. Other matching accessories are also available.



# ROOF DRAINAGE

Product: DS.19 shingle  
Colour: P.10 brown  
Location: Vienna (Austria)  
Installed by: Larisch Dachdesign | Kanzler Dach

**NOW ALSO  
IN MANY  
P.10 COLOURS**

# COLOURS AVAILABLE

**NOW ALSO AVAILABLE IN P.10 QUALITY: ANTHRACITE, BROWN, DARK GREY, LIGHT GREY, NUT BROWN, PREFA WHITE AND BLACK**

The system is available in the classic standard colours to match the roof and façade elements. In this way, elegant tone-in-tone solutions or deliberate colour accents can be created. In addition to the colours anthracite, brown and light grey, the colours dark grey, nut brown, PREFA white and black will be available in P.10 quality from 2021.



		~ RAL	Half-round gutter 250   280   333	Half-round gutter 400	Box gutter 250	Box gutter 333	Box gutter 400	Box gutter 500	On-roof gutter	Square downpipe*
01	P.10 brown	7013	•	•	•	•	•		•	•
02	P.10 anthracite	7016	•	•	•	•	•		•	•
03	P.10 black	9005	•	•	•	•	•		•	•
07	P.10 light grey	7005	•	•	•	•	•		•	•
10	P.10 PREFA white	9002	•	•	•	•	•		•	•
11	P.10 nut brown	8019	•	•	•	•	•		•	•
19	P.10 dark grey	7043	•	•	•	•	•		•	•
01	brown	7013	•	•	•	•	•	•	•	•
02	anthracite	7016	•	•	•	•	•	•	•	•
04	brick red	8004	•			•			•	
05	oxide red	3009	•			•			•	
06	moss green	6005	•	•		•	•		•	
07	light grey	7005	•	•	•	•	•	•	•	•
08	zinc grey	7030	•			•			•	
12	metallic silver	9006	•	•	•	•	•			•
13	plain aluminium	—	•	•	•	•	•	•	•	•

FOR CLEARER UNDERSTANDING, ALL NEW COLOURS FOR 2021 ARE INDICATED WITH

\* The PREFA square downpipe is kept in stock as standard in the P.10 colours of 01 brown, 02 anthracite, 07 light grey, 12 metallic silver and 13 plain aluminium, but can also be supplied in all RAL colours. Please allow for longer delivery times and a surcharge.

## P.10 COLOUR-FAST SURFACE

### UV-RESISTANT, COLOURFAST AND WEATHERPROOF

With P.10, PREFA has developed a colour-resistant finish that meets even the highest quality standards. The material withstands external influences and stresses, and is UV-resistant, colour-fast and weatherproof. At the same time, aluminium is an unbelievably lightweight and stable material, offering a wide range of planning and design possibilities.



**P.10**

P.10 COIL-COATING FINISH

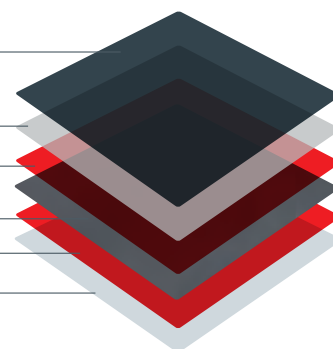
PRIMER

PRE-TREATMENT

BASIC MATERIAL (ALUMINIUM)

PRE-TREATMENT

PROTECTIVE PAINT ON REVERSE





# FAÇADE SYSTEMS

An extravagant appearance  
for many years with minimum maintenance

Product: siding X  
Colour: R10 anthracite  
Location: Montebelluna (Italy)  
Architectural design: Ugo dal Vecchio,  
Arch. Daniela Zadra

## FAÇADE SHINGLE

PAGE 56



## RHOMBOID FAÇADE TILE 44 × 44 | 29 × 29

PAGE 58



## RHOMBOID FAÇADE TILE 20 × 20

PAGE 59



## FX.12 FAÇADE PANEL

PAGE 60



## PREFALZ | FALZONAL®

PAGE 62



## SIDING

PAGE 66



## SIDING.X

PAGE 68



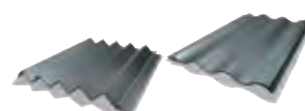
## PREFABOND ALUMINIUM COMPOSITE PANEL

PAGE 70



## EXTRUDED PROFILES SERRATED PROFILE | RIPPLE PROFILE

PAGE 72













Product: façade shingle  
Colour: P.10 light grey  
Location: Ebenbichl (Austria)  
Architectural design: a4L-Architects  
Installed by: Spenglerei Müller GesmbH



## FAÇADE SHINGLE



As though tailor-made for each project

With the PREFA façade shingle, the rhombus shape which has been tried and tested thousands of times over, is combined with the high-tech material, aluminium. This makes it the ideal product for classic-traditional façade designs as well as for modern buildings.

### FLAT LOCK SYSTEM AND CONCEALED FASTENING

The small format, particularly light-weight façade shingle shows its strengths whether used on the smallest surfaces or in large-scale projects, and on new roofs or roof renovations. Through the flat lock system and concealed fastening, the shingle is not only storm-proof but also weather-resistant. Flat lock welts on all four sides guarantee the necessary reliability, ensuring a weatherproof and tight fit on your façade.

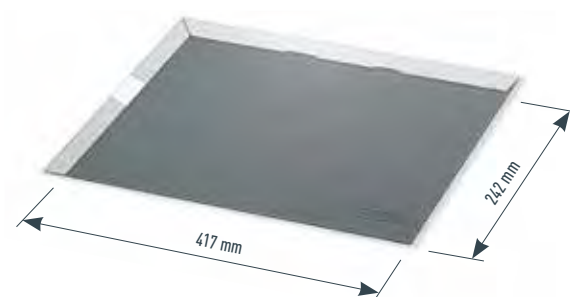




Product: façade shingle  
Colour: P.10 anthracite  
Location: Kaltern (Italy)  
Installed by: Demez Adam

## ELEGANT, MATT DESIGN AVAILABLE IN MANY COLOURS

The PREFA façade shingle with a stucco finish is available in the ten standard colours. A smooth finish is also possible on request. All designs are available with or without “PREFA” embossing. The small-format elements put traditional, scale-like façade designs in a whole new light. The low-maintenance products give the façade an elegant matt structure that you will enjoy for a long time.



## TECHNICAL DATA — FAÇADE SHINGLE

- Material  
coil-coated aluminium, 0.7 mm thick
- Dimensions  
420 × 240 mm (cover), i.e. 10 pc./m<sup>2</sup>
- Weight  
approx. 2.5 kg/m<sup>2</sup>
- Supporting substrate\*  
on fully boarded substrate (at least 24 mm)
- Standard fastening  
indirect fastening, 1 PREFA patent clip and ring nail per façade shingle (i.e. 10 PREFA patent clips and ring nails per m<sup>2</sup>)

\* Observe country-specific standards and specialist guidelines.







Product: rhomboid façade tile 29 × 29  
Colour: P.10 anthracite  
Location: Zirl (Austria)  
Installed by: Hendl  
building-related special solution

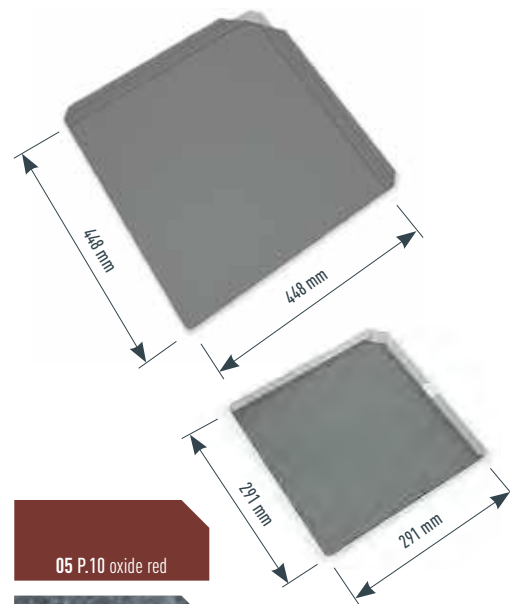
## RHOMBOID FAÇADE TILE 44 × 44 | 29 × 29



### A fresh interpretation of familiar patterns

The large format of the rhomboid façade tile 44 × 44 gives the building a particularly elegant and modern appearance. Weighing only 2.6 kg/m<sup>2</sup>, it is not only extremely lightweight, but the integrated fastening strips also facilitate speedy and inexpensive installation. Only approx. five façade elements are required for one square metre. This also saves time and money.

The roof and façade tile 29 × 29 is the perfect combination of style and function. With its dimensions of 290 × 290 mm, it falls within the medium range and can therefore be used flexibly. Rhomboid façade tiles 29 × 29 can be ordered with or without a ridge.



### TECHNICAL DATA — RHOMBOID FAÇADE TILE 44 × 44 | 29 × 29

- Material  
coil-coated aluminium, 0.7 mm thick
- Dimensions  
437 × 437 mm (cover), i.e. approx. 5 pc./m<sup>2</sup>  
290 × 290 mm (cover), i.e. 12 pc./m<sup>2</sup>
- Weight  
approx. 2.6 kg/m<sup>2</sup>
- Supporting substrate\*  
on fully boarded substrate (at least 24 mm)\*

- Standard fastening  
direct fastening, 4 PREFA ring nails per rhomboid façade tile 44 × 44 (i.e. 20 PREFA ring nails per m<sup>2</sup>)  
  
indirect, 1 PREFA rhomboid façade tile clip as well as 1 ring nail per rhomboid façade tile 29 × 29 (i.e. 12 PREFA rhomboid façade tile clips as well as 12 ring nails per m<sup>2</sup>)

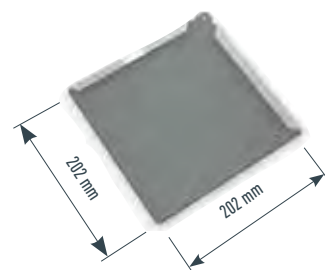
\* Observe country-specific standards and specialist guidelines.

Product: rhomboid façade tile 20 × 20  
 Colour: P.10 anthracite  
 Location: Windheim (Germany)  
 Architectural design: Andreas Vetter  
 Installed by: Max Weber

## RHOMBOID FAÇADE TILE 20 × 20



With the small-format rhomboid façade tile 20 × 20, architectural features can be effectively highlighted. Smaller façade areas, gables, chimneys and bays can be attractively covered with great attention to detail. Even individual patterns with different shades of colour are possible and make every building unique. Combining the small-format rhomboid façade tiles with other façade components creates a particularly attractive effect.



### TECHNICAL DATA — RHOMBOID FAÇADE TILE 20 × 20

- Material  
coil-coated aluminium, 0.7 mm thick
- Dimensions  
200 × 200 mm (cover), i.e. 25 pc./m<sup>2</sup>
- Weight  
approx. 2.8 kg/m<sup>2</sup>
- Supporting substrate\*  
on fully boarded substrate (at least 24 mm)
- Standard fastening  
direct fastening, 1 PREFA ring nail per rhomboid façade tile 20 × 20 (i.e. 25 PREFA ring nails per m<sup>2</sup>)

\* Observe country-specific standards and specialist guidelines.





Product: FX.12 roof and façade panel  
Colour: P.10 brown  
Location: St. Marein bei Graz (Austria)  
Architectural design: Architekturbüro Meier  
Installed by: Josef Kleissner GmbH

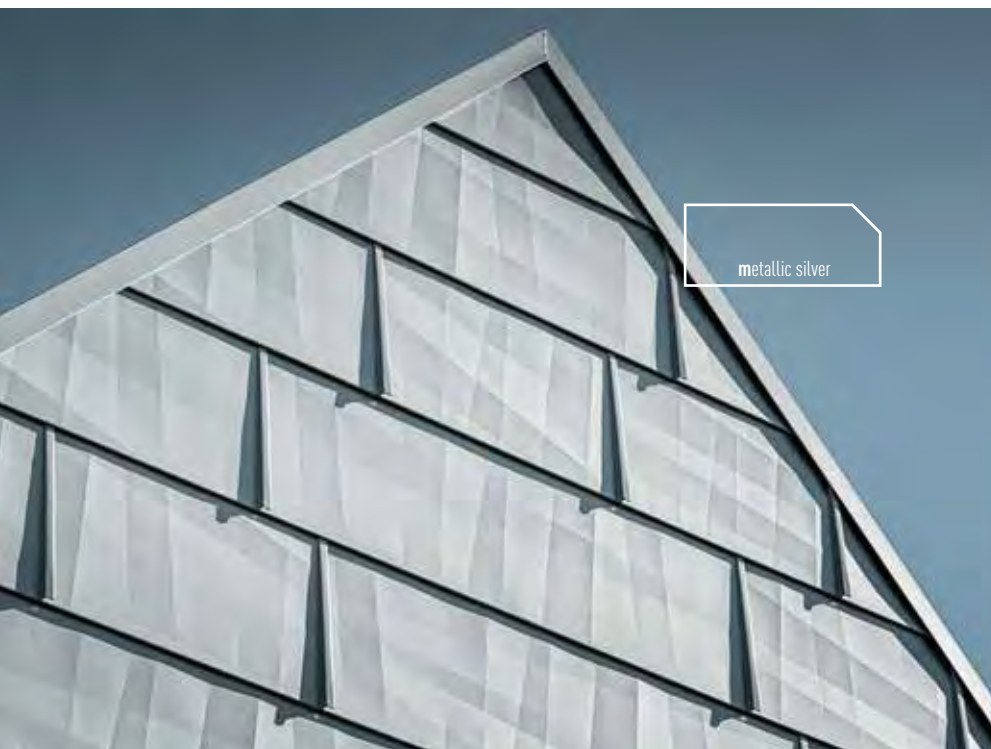


## FX.12 FAÇADE PANEL



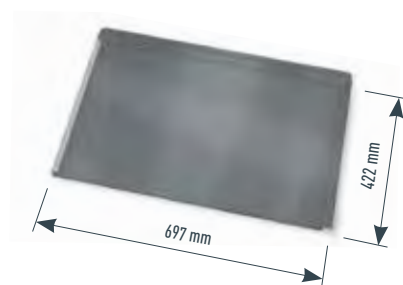
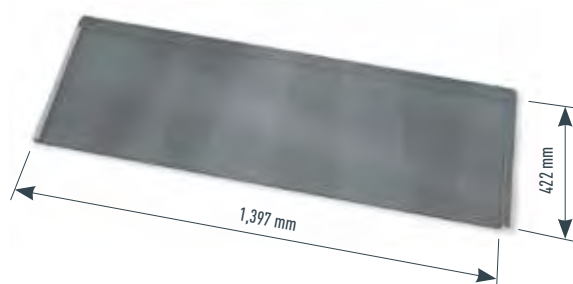
### Vibrant light and shade effects

PREFA's FX.12 façade panels are innovative design elements which enable particularly futuristic surfaces to be created with their geometric designs. The appearance differs depending on how the light falls, making every building unique. The use of two different panel dimensions (small and large) further enhances the asymmetrical, one-of-a-kind look. In two different sizes to suit your project.



### A CLEVER DESIGN ENSURES GREATER STABILITY

The geometric surface design has an even more important role: it reinforces the panels, ensuring even greater resistance. The tapered standing seam absorbs any lateral expansion. The panels are installed using the integrated fastening strip without requiring additional clips. The FX.12 façade panels are available in 15 standard colours.



## TECHNICAL DATA — FX.12 FAÇADE PANEL

- **Material**  
coil-coated aluminium, 0.7 mm thick
- **Dimensions**  
700 × 420 mm (cover), i.e. 3.4 pc./m<sup>2</sup>  
1,400 × 420 mm (cover), i.e. 1.7 pc./m<sup>2</sup>
- **Weight**  
approx. 2.4–2.5 kg/m<sup>2</sup>
- **Supporting substrate\***  
on fully boarded substrate or skip sheathing (at least 24 mm thick)
- **Standard fastening**  
direct, with 3 PREFA ring nails per small FX.12 façade panel, with 5 PREFA ring nails per large FX.12 façade panel (i.e. 8–10 PREFA ring nails per m<sup>2</sup>)

\* Observe country-specific standards and specialist guidelines.







## PREFALZ



A combination of malleability, elegance and infinite design possibilities

PREFALZ offers numerous possibilities in terms of colour and shape. Thanks to its aluminium material, it is more supple than most comparable folding materials and therefore particularly easy to form. PREFALZ offers planners countless individual design possibilities that would barely be conceivable with any other material. Folds and bends won't affect the paint quality at all. PREFALZ is supplied in a total of 18 colours and in plain aluminium with a smooth or stucco surface, as required.



Façades designed with PREFALZ have the highest stability and durability. PREFALZ can also be installed well even in low temperatures. Rainproof joints can be easily achieved thanks to the concealed, invisible fastening.



Product: PREFALZ  
 Colour: P.10 sand brown  
 Location: Schiefling am See (Austria)  
 Architectural design: Gerald Kopeinik  
 Installed by: Michael Doujak

## TRULY LIGHTWEIGHT

With its low weight of between 2.2 and 2.3 kg/m<sup>2</sup>, depending on the tray width, PREFALZ is suitable for conversions of both old and new buildings, and can be expanded with the wide range of PREFA system accessories.



01 P.10 brown	02 P.10 anthracite	03 P.10 black	04 P.10 brick red	05 P.10 oxide red	06 P.10 moss green
07 P.10 light grey	08 P.10 zinc grey	10 P.10 PREFA white	11 P.10 nut brown	12 metallic silver	13 plain aluminium
17 P.10 pure white	19 P.10 dark grey	23 black grey	43 P.10 stone grey	45 bronze	46 P.10 patina green
47 patina grey					

## TECHNICAL DATA — PREFALZ

- Material  
coil-coated aluminium, 0.7 mm thick
- Dimensions  
PREFALZ for façades: 0.7 × 500 mm  
complementary coil: 0.7 × 1,000 mm
- Weight  
approx. 1.89 kg/m<sup>2</sup>  
actual consumption with PREFALZ 500: approx. 2.3 kg/m<sup>2</sup>
- Supporting substrate and separation layer\*  
on fully boarded substrate (at least 24 mm)
- Fastening  
PREFA preformed fixed and long sliding clips (stainless steel)  
according to static requirements

\* Observe country-specific standards and specialist guidelines.





Product: PREFALZ  
Colour: P10 anthracite  
Location: Nové Hamry (the Czech Republic)  
Architectural design: NEW HOW architekti  
Installed by: Tomáš Padevět

## FALZONAL®

### THE RIGHT MATERIAL FOR HIGH DESIGN EXPECTATIONS

In terms of alloy, strength and coating, FALZONAL®, the colour aluminium strip, has been specially tailored for applications using sheet metal techniques. It is perfectly suited to the widest variety of folding techniques and can be individually combined with materials such as wood and glass. The material is easy to work with and at the same time is highly

resilient. Simple façade areas or complex façade architecture can be turned into reality.

### AVAILABLE IN MANY COLOURS FROM COPPER TO TITANIUM

FALZONAL® is available in a wide range of colours and surfaces with plain or metallic colours including copper, zinc or titanium shades. The PVDF coating (80/20) is UV-resistant and environmentally sound.

**Product:** FALZONAL®

**Colour:** new copper, dusty blue, grey-green, savannah beige

**Location:** Trondheim (Norway)

**Architectural design:** Agraff Arkitektur

**Installed by:** Mesterblukk AS



## FALZONAL® COLOUR RANGE

weathered clear varnish	standard pure white	tin grey	zinc grey	matt light zinc	matt light grey
anthracite grey	matt dark grey	anodic brown	Victorian brick red	copper brown	coffee brown
reseda green	light ivory	dusty blue	opal green	grey-green	quartz grey
pearl white	savannah beige	pastel turquoise	broom yellow	crimson	turquoise blue
mint green	olive green	azure blue	light grey	gentian blue	carbon black
bright metallic	grey aluminium	light bronze	new copper	maya gold	

## TECHNICAL DATA — FALZONAL®

- Material  
coil-coated aluminium, 0.7 mm thick
- Standard dimensions  
0.7 × 600 mm  
complementary coil: 0.7 × 1,200 mm
- Weight  
approx. 1.89 kg/m<sup>2</sup>  
actual consumption with FALZONAL® 600:  
approx. 2.19 kg/m<sup>2</sup>

- Supporting substrate\*  
on fully boarded substrate (at least 24 mm)
- Fastening  
PREFA preformed fixed and long sliding clips (stainless steel)  
according to static requirements

\* Observe country-specific standards and specialist guidelines.





**Product:** siding  
**Colour:** silver (special colour), matt anthracite (special colour)  
**Location:** Leonding (Austria)  
**Architectural design:** Ing. Peter Blineder  
**Installed by:** Stadler Wilhelm GesmbH



## SIDING

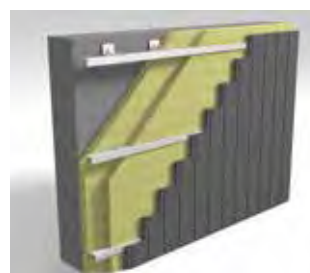


The intelligent façade solution offers countless possibilities.

Façade cladding, eaves and much more — with PREFA sidings, buildings can be cleverly embellished, modernized and preserved for decades. These attractive all-rounders can be installed outdoors as well as indoors and can be laid vertically, horizontally or at an angle, with or without a shadow gap. Practical corner sidings ensure a smooth-flowing exterior. The concealed fastening (via a tongue and groove system) guarantees a strong hold and an attractive appearance. The PREFA façade sidings are screwed onto a professional supporting substrate made of timber or metal, or a combination of the two materials, with a ventilation cavity in accordance with national standards. The combination of rainscreen cladding system, a structural wall (masonry) and thermal insulation ensures optimum thermal and sound insulation properties.

### A COMPLETELY UNIQUE FAÇADE

Choose from a wide range of 24 standard colours and three different surfaces: smooth, stucco and lined. The length of the siding can be made to measure from anything between 0.5 and 6.2 m. The combination of different visible widths offers additional individual design possibilities.



PREFA siding (vertical)

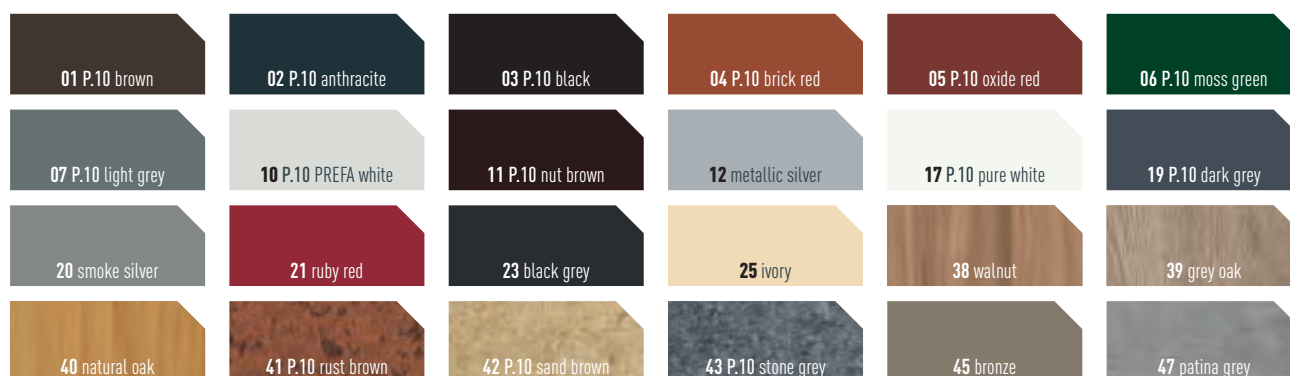
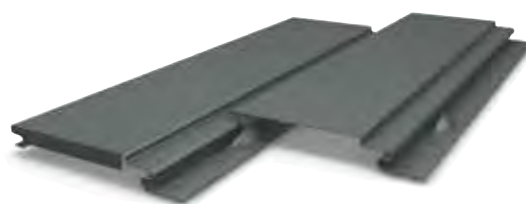


PREFA siding (horizontal)

Product: siding  
 Colour: walnut  
 Location: Satteldorf (Germany)  
 Installed by: SCHEU Flaschnerei und Haustechnik

## NO MORE PAINTING OR TOUCHING UP REQUIRED

With aluminium sidings, there's no longer any need to carry out tedious repainting or touch-ups. The aluminium façade is weather-resistant and long-lasting. At the same time, the warm, wood-look colours of walnut brown, grey oak and natural oak ensure a natural appearance.



## TECHNICAL DATA — SIDING

- **Material**  
coil-coated aluminium  
smooth finish, stucco or lined  
with or without a shadow gap
- **Dimensions**  
138 × 0.7 mm  
200 × 1.0 mm  
300 × 1.2 mm  
400 × 1.2 mm
- **Weight**  
approx. 3.3 to 4.3 kg/m<sup>2</sup> (depending on the visible width  
and material thickness)
- **Lengths**  
500–2,500 mm for all visible widths (with PREFA joint)  
500–6,200 mm for all visible widths (without PREFA joint)
- **Fastening**  
screwed to the aluminium or timber supporting substrate  
fasteners: 6–9 pc./m<sup>2</sup>  
the PREFA storm-proof clip must be used for the 400 × 1.2 mm  
dimension





Product: siding.X  
 Colour: P.10 PREFA white  
 Location: Taiskirchen (Austria)  
 Architectural design: Reinstadler A4L Architects  
 Installed by: Duswald Bau

## SIDING.X



Brilliant solutions that convince right across the board.

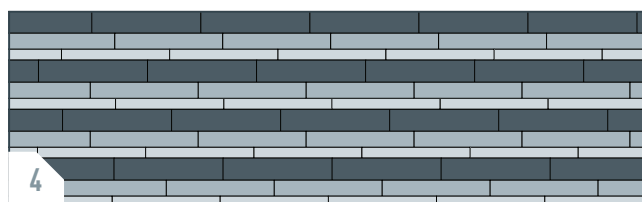
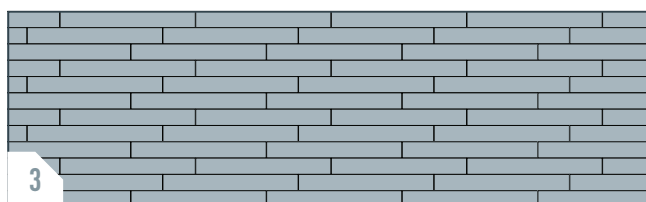
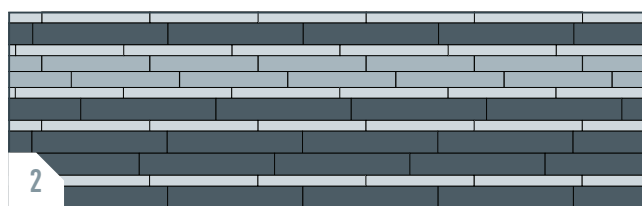
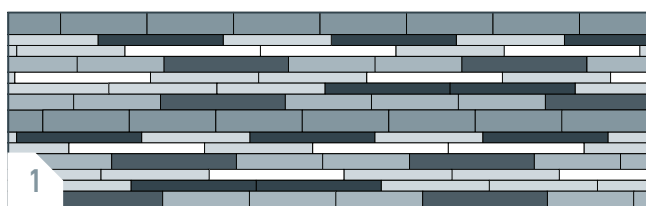
A new variant — the PREFA siding.X has now been added to the original PREFA siding model. Characterized by geometrical, crisscross patterns, the PREFA siding.X offers an even more distinctive and modern look. At the same time, excellent constructional and functional properties can be achieved. With the large selection of 21 standard colours, each building can either be completely immersed in the colour of your choice, or individual colour highlights can be created. Like the PREFA siding, the PREFA siding.X is also designed as a rainscreen and, in the overall system, which includes façade cladding, rainscreen support system, insulation and masonry, it ensures excellent thermal and sound insulation properties inside the building.



P.10 anthracite

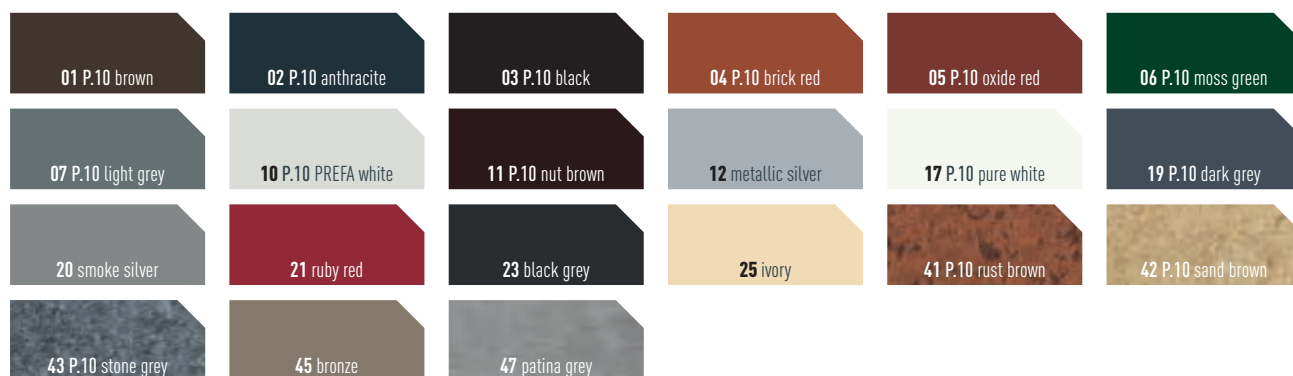
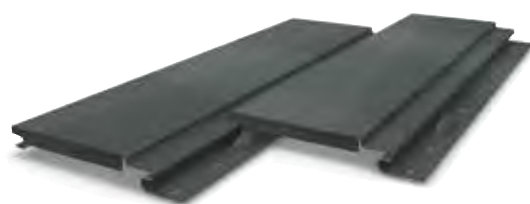


P.10 anthracite



## SIDING.X INSTALLATION DIAGRAMS

The siding.X is available in visible widths 200 mm, 300 mm and 400 mm, and can be installed horizontally, vertically and diagonally. By combining customizable lengths and different widths of the siding.X, you can design your façades as you wish. We have created four standard installation diagrams for you (see above). However, countless other variations are also possible (combinations of visible widths and lengths).



## TECHNICAL DATA — SIDING.X

- **Material**  
coil-coated aluminium  
smooth finish, with or without a shadow gap
- **Standard formats**  
200 × 1.0 mm | 300 × 1.0 mm | 400 × 1.0 mm
- **Weight**  
approx. 3.3 to 4.3 kg/m<sup>2</sup> (depending on the visible width)
- **Lengths**  
500–2,500 mm for all visible widths (with PREFA joint)  
500–6,200 mm for all visible widths (without PREFA joint)
- **Fastening**  
screwed to the aluminium or timber supporting substrate  
fasteners: 6–9 pc./m<sup>2</sup>  
For the dimensions 300 × 1.0 mm and 400 × 1.0 mm, the PREFA storm-proof clip must be used





## PREFABOND ALUMINIUM COMPOSITE PANEL



A modern, flat appearance even on small-scale projects

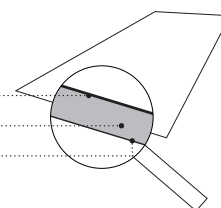
The PREFABOND aluminium composite panel is the ideal façade cladding not only for large areas, but also for small ones — it not only looks great but is also extremely durable thanks to a special combination of materials. The PREFABOND aluminium composite panel consists of two aluminium sheets which are fusion-bonded to both sides of a FR core.

### ELEGANT, UNIFORM APPEARANCE

The PREFABOND panels can be fixed with screws or rivets and can also be bonded — an added advantage for an elegant, uniform appearance even on small areas. Individual design possibilities result form a large selection of colours and the individual cutting sizes. The composite panels are ideal wherever small areas are required to make a big impression.

**PREFABOND IS NOW  
AVAILABLE IN FIVE  
P.10 COLOURS!**  
More information at  
[www.prefa.com!](http://www.prefa.com!)

coil-coated aluminium  
(front) .....  
FR core (fire retardant)\* .....  
aluminium with protective paint  
(reverse) .....



\* A2 core on request

## MILLING, DRILLING AND FOLDING — THE PREFABOND COMPOSITE PANEL PUTS UP WITH EVERYTHING

The PREFABOND composite panel is highly resistant to corrosion and weather, and boasts high deflection stiffness and shock resistance. It also offers a high degree of design freedom with all the advantages of rainscreens. The standard panel (with FR core) has an untrimmed dimension of 4,010 × 1,535 mm (usable format: 4,000 × 1,525 mm). Different formats can be cut from this depending on requirements. Versatile machining options such as milling, drilling and folding are also possible. And all of that with a minimum weight of just 7.6 kg/m<sup>2</sup>.



### MOUNTING OPTIONS



RIVETING



SCREWING



ADHESIVE BONDING

### PROCESSING OPTIONS



SAWING



V-SLOT MILLING



PANEL BENDING



DRILLING



ENGRAVING  
MILLING



NOTCHING



CONTOUR MILLING

## TECHNICAL DATA — PREFABOND ALUMINIUM COMPOSITE PANEL

- **Material**  
coil-coated aluminium (front), FR core (fire retardant)\*, aluminium with protective paint (reverse)
- **Coating**  
high-quality coil-coating finish  
front: Duragloss® 5000 or P.10; reverse: protective paint
- **Dimensions**  
4,010 × 1,535 × 4.0 mm  
usable format: 4,000 × 1,525 × 4.0 mm  
other formats and processing options (cutting, milling, drilling) possible

- **Weight**  
7.6 kg/m<sup>2</sup>
- **Fastening**  
on timber supporting substrate: screwed down or glued  
on aluminium supporting substrate: riveted or glued according to static requirements

\* A2 core on request





Product: serrated profile  
Colour: special colour  
Location: Kufstein (Austria)  
Architectural design: Tom Projekt Design Arthof Projects  
Installed by: Karl Jäger



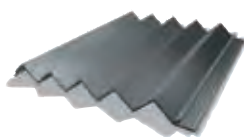
## EXTRUDED PROFILES



Robust design on large façade areas

### SERRATED PROFILE

The PREFA serrated profile is a modern façade profile made of extruded aluminium — the ideal combination of technology and architectural design. Due to the profile thickness of 2 mm, the profiles are extremely robust and break-proof, and can also be used to cover sensitive areas on the building, permanently and durably. Quick and easy mounting is possible in a horizontal, vertical or inclined position, without visible fasteners.



### UNIQUE DESIGN, INCLUDING ON LARGE AREAS

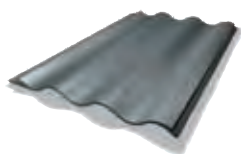
The serrations create a unique design with an interesting interplay of light and shadow. They are available powder-coated or uncoated (anodizable material). Individually cut to length and available in a wide range of colours with a powder-coated finish — the design possibilities are endless.



Product: ripple profile  
 Colour: anodized aluminium  
 Location: Leonding (Austria)  
 Architectural design: pbp Architekten Platzl Barth + Partner zt-gmbh  
 Installed by: Innocente GmbH

## RIPPLE PROFILE

The PREFA ripple profile, made of 2 mm-thick strong extruded aluminium alloy, ensures the highest shape retention and superior weather-resistance even under extreme strain. The fine material structure and concealed fastening create an elegant appearance — the ideal material for architectural projects designed to last for generations.



## EASY, TROUBLE-FREE INSTALLATION

The profiles are available in customizable lengths of up to 6.2 m and can be installed horizontally, vertically or diagonally. The range of accessories with starter, closing and corner profiles ensures easy, trouble-free installation. The ripple profile is available powder-coated or uncoated (anodizable material).



## TECHNICAL DATA — EXTRUDED PROFILES

- Material  
extruded aluminium alloy
- Dimensions (profile height/spacing/material thickness)  
**ripple profile:** 10/47/2.00 mm; width: 140 mm  
**serrated profile:** 22/40/2.0 mm; width: 200 mm
- Weight  
**ripple profile:** 6.62 kg/m<sup>2</sup>  
**serrated profile:** 7.5 kg/m<sup>2</sup>
- Standard fastening  
with concealed screws according to static requirements
- Finish  
uncoated (anodizable aluminium) or powder-coated
- Lengths  
 piece lengths in uncoated aluminium: up to max. 6,200 mm  
 powder-coated piece lengths: up to max. 3,000 mm





# FLOOD PROTECTION

---

Easy assembly, fast protection









## FLOOD PROTECTION



### Easy assembly, fast protection

Sudden heavy or torrential rain creates large volumes of water that flow over roads and paths towards houses or garage entrances. Rivers and streams can also burst their banks. Floods, torrents of water and mudslides can quickly develop and flood entire residential areas. They leave behind damage to the building fabric due to moisture and contamination inside the building, in gardens and on terraces. The force of the water can unsettle houses, shake their structures and — if water and mud penetrate through doors and windows — render them completely uninhabitable.

### KEEPING SAFE FROM PENETRATING FLOODS

Flood protection is a central issue particularly in regions at risk. In addition to special insurance policies which take effect in the event of damage or loss, structural measures can help prevent damage caused by storms. PREFA knows from its own experience how powerful a flood can be and the damage that can be

caused. That's why it has developed a demountable flood protection system made of aluminium. Lightweight yet extremely robust aluminium profiles protect doors, gates, windows, garages and entire areas from penetrating flood water.



### FLOOD PROTECTION — LIGHTWEIGHT, STRONG AND EASY TO INSTALL

The partly demountable flood barrier, made of strong aluminium barrier panels, is used to protect buildings and property. Aluminium is ideal for the job as it is break-proof, rust-proof and weather-resistant, while at the same time, extremely lightweight. The flood barrier provides complete security as soon as the first panel is laid. As the level of water rises, the number of barrier panels can also be increased.

## A SYSTEM THAT'S WELL-THOUGHT-OUT IN EVERY DETAIL

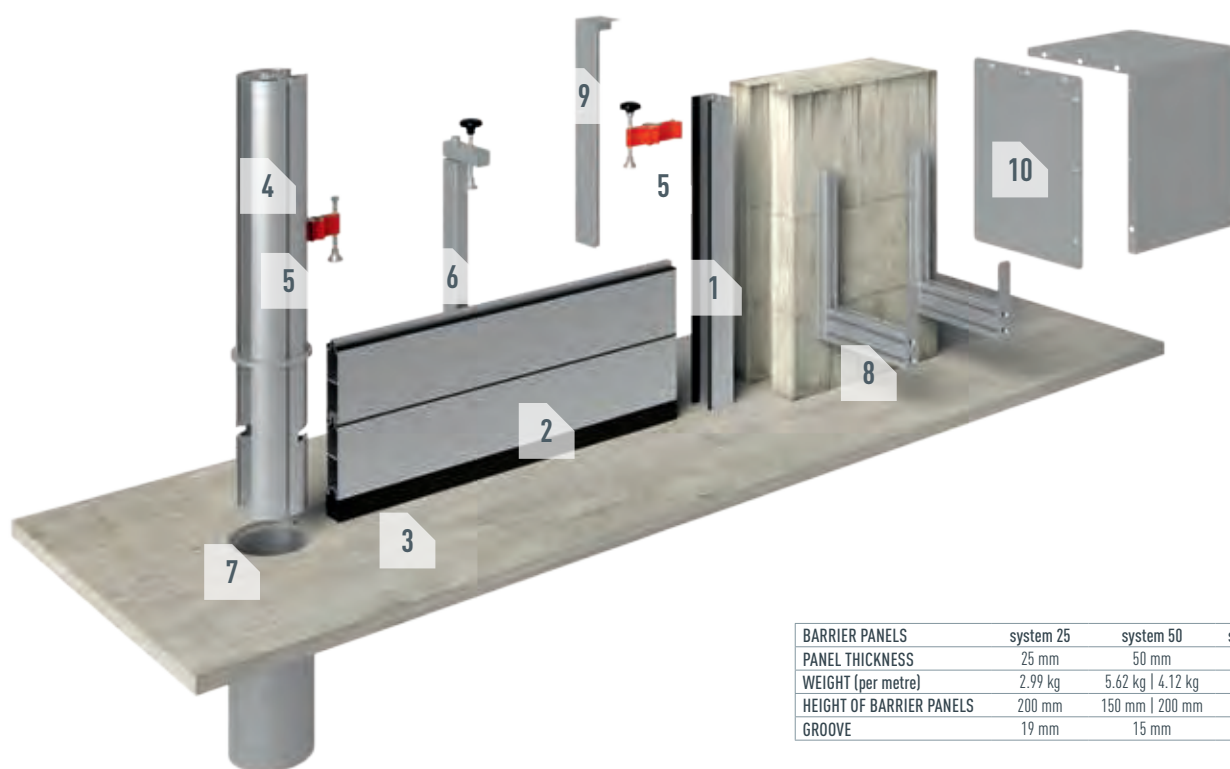
Barrier panels are pushed into the mounting profiles or uprights on both sides. The barrier panels are stacked via a tongue and groove system, sealed with special replaceable rubber seals and attached at the top with a compression clamp. The length of the flood barrier can be increased as necessary, or an existing safety barrier can be extended. The system can be mounted in front of, in or behind the reveal.

### READY FOR USE AT ALL TIMES, AND VIRTUALLY INVISIBLE WHEN NOT IN USE

The extremely weather-resistant flood protection system can be mounted when needed and taken apart again, becoming virtually invisible. The permanently installed mounting profiles can be colour-coordinated to match the design of your façade.

### ADVANTAGES OF THE ROBUST PREFAB FLOOD PROTECTION SYSTEM MADE OF ALUMINIUM

- Ready for use at all times
- Quick and easy assembly
- Lightweight
- Easy to store



BARRIER PANELS	system 25	system 50	system 80
PANEL THICKNESS	25 mm	50 mm	80 mm
WEIGHT (per metre)	2.99 kg	5.62 kg   4.12 kg	7.78 kg
HEIGHT OF BARRIER PANELS	200 mm	150 mm   200 mm	200 mm
GROOVE	19 mm	15 mm	15 mm

#### 1. wall profile

Permanently built into the masonry or installed in front of, in or fitted flush in the reveal.

#### 2. barrier panels

Illustrated here: the lowest barrier panel connected to point 3.

#### 3. ground seal

Ensures sealing between the lowest barrier panel and the ground.

#### 4. centre column

In larger areas, these uprights can be used as intermediate columns.

#### 5. compression clamp

(with hex-head screw or with star-shaped handle)

For clamping the barrier panels in place.

#### 6. retainer

Prevents horizontal and vertical deflection of the barrier panels.

#### 7. ground sleeve

Sleeve fixed permanently in the ground with concrete for inserting the centre column.

#### 8. wall bracket

For stacking the barrier panels during storage when not in use.

#### 9. angular cover

For covering the wall profiles when not in use.

#### 10. storage casing

The individual sections (length: 440 mm) are screwed together.



# RENOVATION

Lightweight PREFA products  
facilitate every renovation project.

Product: FX.12 roof panel, siding  
Colour: P.10 anthracite, P.10 PREFA white  
Location: Ludwigsstadt (Germany)  
Installed by: Weber (Ludwigsstadt)

# THE COMPLETE SYSTEM CONSISTING OF ROOF AND FAÇADE SYSTEMS AS WELL AS RAINWATER GOODS AND MUCH MORE

With its “all-round carefree package”, PREFA offers all the building components you need for a successful renovation. With over 5,000 different products, the complete system enables the perfect interaction between the roof, the roof drainage system, the façades and the solar panel supporting substrate — from covering and cladding elements to the widest variety of accessories. The high PREFA product quality and the longevity of the material, aluminium, gives planners, contractors and builders maximum reliability. PREFA even provides this in writing with its 40-year guarantee on materials and colours\*.



\* The colour guarantee ensures that the P.10 painted surface is protected from chips and blistering under the terms specified in the guarantee certificate.

## ROOF RENOVATION



## LIVING SPACE EXTENSIONS AND ATTIC CONVERSIONS



## FAÇADE RENOVATION





Product: shingle, façade shingle  
 Colour: P.10 anthracite  
 Location: Žabnica (Slovenia)



## ROOF RENOVATION

The covering is lightweight, the roof structure remains strong.

Broken shingles or roof tiles, inadequate thermal insulation — when your roof covering, supporting substrate or insulation no longer or only inadequately fulfils its function, it's time to start thinking about renovating your roof or installing a new covering in order to prevent consequential damage (e.g. water ingress). If cracks or damage to the roof membrane are already visible, renovation is essential to prevent further damage being caused to the building materials.

BEFORE



AFTER



BEFORE



AFTER







Product: EX 12 roof panel  
Colour: P 10 anthracite  
Location: Ludwigsstadt (Germany)  
Installed by: Weber (Ludwigsstadt)

AFTER

## ROOF COVERING WITH EASE

PREFA roof systems are optimally suited for renovation projects. The high-quality aluminium products are resistant, rust-proof, storm-proof and, at the same time, extremely lightweight. Another major advantage is that a PREFA aluminium roof weighs only a fraction of a traditional roof. The reduced load considerably relieves, and therefore conserves, the roof structure. Ideally, existing roof structures do not need to be reinforced before new roofing is applied. However, the roof framework should definitely be checked by a qualified specialist during the course of every renovation.

BEFORE

## RELIEVES THE BURDEN ON YOUR ROOF STRUCTURE — AND ON YOUR BUDGET

By way of comparison, an aluminium roof has a dead weight of only 2.3 to 2.6 kilograms per square metre. With an average roof surface of 200 square metres, the construction is several tonnes lighter than a conventional tiled roof — and lasts for decades to come. The lighter weight of the material also has an influence on transport and construction site times: the material is optimally prepared by PREFA and generally delivered by just one vehicle. That saves time and money.

Step by step advice for renovating your roof can be found at [UK.PREFA.COM/ROOF-RENOVATION](https://uk.prefa.com/roof-renovation)







BEFORE



Product: shingle  
Colour: P.10 anthracite  
Location: Mattsee (Austria)  
Installed by: Franz Wilhelm e.U. Spenglerei und Dachdeckerei

AFTER

## FOR EVERY SHAPE OF ROOF, AND FOR ALL THE NOOKS AND CRANNIES

Regardless of the shape of your roof, aluminium offers great flexibility, both technically and visually, along with enormous creative scope. PREFA offers the right accessories not only for pitched roofs, but also for very low roof pitches. The fact that the material is so malleable and easy to work with also makes it possible to securely cover every nook and cranny, particularly in the case of old buildings. Uneven roof structures, as is often the case on old farmhouses, can also be optimally covered with a lightweight roof made of aluminium.



BEFORE

AFTER







BEFORE



AFTER

## PROFESSIONAL SUPPORT

Specialist knowledge and many years of experience are required to find the optimum solution for your own building, especially where renovations are concerned. Involving experts early on, already during the planning phase, saves a lot of time and money. Please note that for guarantee and quality reasons, every PREFA product may only be installed or mounted by experts preferably trained by PREFA.

BEFORE



AFTER





**Product:** rhomboid roof tile 29 × 29  
**Colour:** P.10 patina grey  
**Location:** Silandro (Italy)  
**Installed by:** Spenglerei Kind Gustav  
 building-related special solution



AFTER

## EXPANDING, EXTENDING AND ENLARGING

When more space is required.

Whether you need a playroom, an office or just more space to accommodate the relatives, an extension or attic conversion is the ideal solution for creating more living space. A professional conversion of an old building not only increases the value of the property but can also improve the building's energy balance, for example, by insulating the attic during the conversion.

AFTER

### A UNIFORM, MODERN APPEARANCE

With the complete system of over 5,000 different products for your roof, façade and drainage system, PREFA offers everything you need to successfully extend your home. All the components match perfectly, giving your entire building a uniform, modern appearance from the driveway to the gables.

BEFORE



P.10 patina grey



Product: shingle  
Colour: P.10 anthracite  
Location: Vienna (Austria)  
Installed by: Schibich Hermann GmbH



## PREFA PHOTO SERVICE – FREE PHOTO MONTAGE

With the PREFA photo service, you can already get an idea, during the planning stage, of what your house would look like with a new roof or façade after the conversion. Simply fill in the form, upload up to two photos of the building, and you will be sent a photo montage within a few days — free-of-charge! You can find more information at [UK.PREFA.COM/PHOTO-SERVICE](https://uk.prefa.com/photo-service).







Product: FX.12 façade panel, aluminium composite panel  
 Colour: P.10 anthracite  
 Location: Borinka (Slovakia)  
 Installed by: Zlatko Serfezi, Zinn s.r.o.

AFTER

## FAÇADE RENOVATION

Finally, a beautiful façade that will last for generations.

A façade renovation may either be desirable for aesthetic reasons or necessary for technical reasons. In the worst case scenario, your façade is already heavily damaged. Moisture can penetrate into the load-bearing masonry through broken brickwork or leaking areas. PREFA offers the optimum façade system with a long service life for countless renovation projects, and at the same time, it is virtually maintenance-free.

The material, aluminium, does not rust, is weather-resistant and can be very well processed by trained specialists. A wide range of different façade products is available — from shingles, rhomboid tiles and FX.12 panels to the stylish siding and siding.X elements. All products are available in numerous shades and offer individual design possibilities. Whether completely traditional or highly modern, your building shell can be designed according to your own individual preferences.

AFTER



BEFORE







Product: roof tile, siding  
 Colour: P.10 anthracite, metallic silver  
 Location: Rammingen (Germany)  
 Installed by: Mayer

## ALUMINIUM FAÇADE WITH A VENTILATED CAVITY

The structural element on which the exterior cladding is installed is based on the tried and tested rainscreen system, recommended by many experts as the optimum solution. The ventilated system ensures that moist air is removed by a constant flow of air through the ventilation cavity, between the thermally-insulated supporting structure and the façade cladding. The system is also recommended from an ecological point of view: the aluminium elements can be dismantled and the individual components can be recycled separately.







## ALL APPLICATIONS, GREAT AND SMALL!

### Reliable weather protection

Façade products made from aluminium are ideal for protecting the side of a building that faces the direction of the prevailing weather from rain and storms. Often, it is not necessary to replace the entire building shell but instead, in some cases, it can be enough just to repair smaller areas. Long-lasting, low-maintenance façade solutions are particularly in demand for small-scale applications on the gables, for overhanging eaves, the underside of eaves or the base.

### INDIVIDUAL DESIGN POSSIBILITIES

A wide range of different roof and façade products is available. Whether completely traditional or highly modern, your building shell can be designed in numerous different shades according to your own individual preferences. Thanks to the technically coordinated complete system for your roof, façade and drainage system, all components mesh together perfectly.



Product: siding  
Colour: natural oak  
Location: Hartkirchen (Austria)

**NEVER  
PAINT AGAIN!**  
A perfect wooden  
appearance in top  
quality—  
virtually  
maintenance-free

## NEW RANGE OF IMITATION WOOD COLOURS

Wooden façade designs are very popular, but you don't necessarily need wood to get that wooden look! PREFA has developed a very special wood appearance for its sidings, combining the qualitative advantages of aluminium with the traditional design of a wooden façade. To achieve the most realistic wooden appearance possible, the elements should be provided with a shadow gap. On gable cladding, wood-look sidings are often installed vertically with a shadow gap, although, of course, this depends on the region and the building owner's taste. Sidings are also ideal for achieving perfectly colour-coordinated, low-maintenance eaves. And the added advantage is that, unlike "real" wooden façades, painting is no longer necessary. The sidings are available in the colours walnut, grey oak and natural oak.



38 walnut



39 grey oak



40 natural oak





# EXTREME CONDITIONS

PREFA shows what it is capable of—everywhere.



Product: FX.12 roof and façade panel  
Colour: P.10 stone grey  
Location: La Grave (France)  
Architectural design: Atelier 17 C — Architectes  
Installed by: Altibois

With PREFA's aluminium roof and façade products, you can be sure that your building is completely protected. The proven systems withstand snow, storms and bad weather. Where traditional roofs or façades frequently fail, a PREFA roof remains naturally steadfast.

#### EXTREME WEATHER CONDITIONS



#### COMPLETELY PROTECTED



#### SAFETY IN HIGH SNOW LOADS



#### MAXIMUM STORM PROTECTION







Product: FX.12 roof and façade panel  
Colour: P.10 stone grey  
Location: La Grave (France)  
Architectural design: Atelier 17 C – Architectes  
Installed by: Altiplus

## EXTREME WEATHER CONDITIONS

PREFA remains strong — in all weathers!

In recent years, bad weather such as thunderstorms and torrential rain has become increasingly drastic. Global warming is certainly leaving its mark. Warmer air can absorb more water vapour than colder air, which results in greater precipitation. This results in hail, gale-force winds, torrential rain and flooding.



Product: PREFALZ  
Colour: P.10 stone grey  
Location: Zermatt (Switzerland)  
Architectural design: Arnold Perren Zurniwen GmbH  
Installed by: Spenglerei Arnold AG

### FLOODS, LANDSLIDES AND AVALANCHES

Floods, landslides, mudslides and avalanches can all occur as a result of a storm. The mountainous regions in Austria, Switzerland and Southern Germany are particularly affected due to the steep gradients there. However, in lowlands too, rivers, streams and lakes can overflow their banks. Experts also estimate heavier snowfall in the next 20 to 30 years, as precipitation is also increasing in the winter.

### ALUMINIUM IS BREAK-PROOF AND RELIABLE

It is not only PREFA's roof products, but also its façade products that are weatherproof, break-proof and reliable, even in extreme conditions. Aluminium's particularly good properties and resistance are the reason for this. Not even heavy rainfall, heavy snow loads or extreme temperature fluctuations pose a problem for PREFA aluminium roofs and façades.



Product: FX.12 roof and façade panel  
Colour: P.10 stone grey  
Location: Ramsau (Austria)  
Architectural design: Dreipius Architekten  
Installed by: Grossi Dach



## COMPLETELY PROTECTED

---

### A perfectly coordinated complete system

With PREFA's aluminium complete system made up of more than 5,000 products, you can be sure that your building is completely protected. Sophisticated technical detailed solutions enable the perfect interaction between the different components while a wide range of colours, formats and surfaces offers endless design possibilities.

### OUR PROMISE: A 40-YEAR GUARANTEE

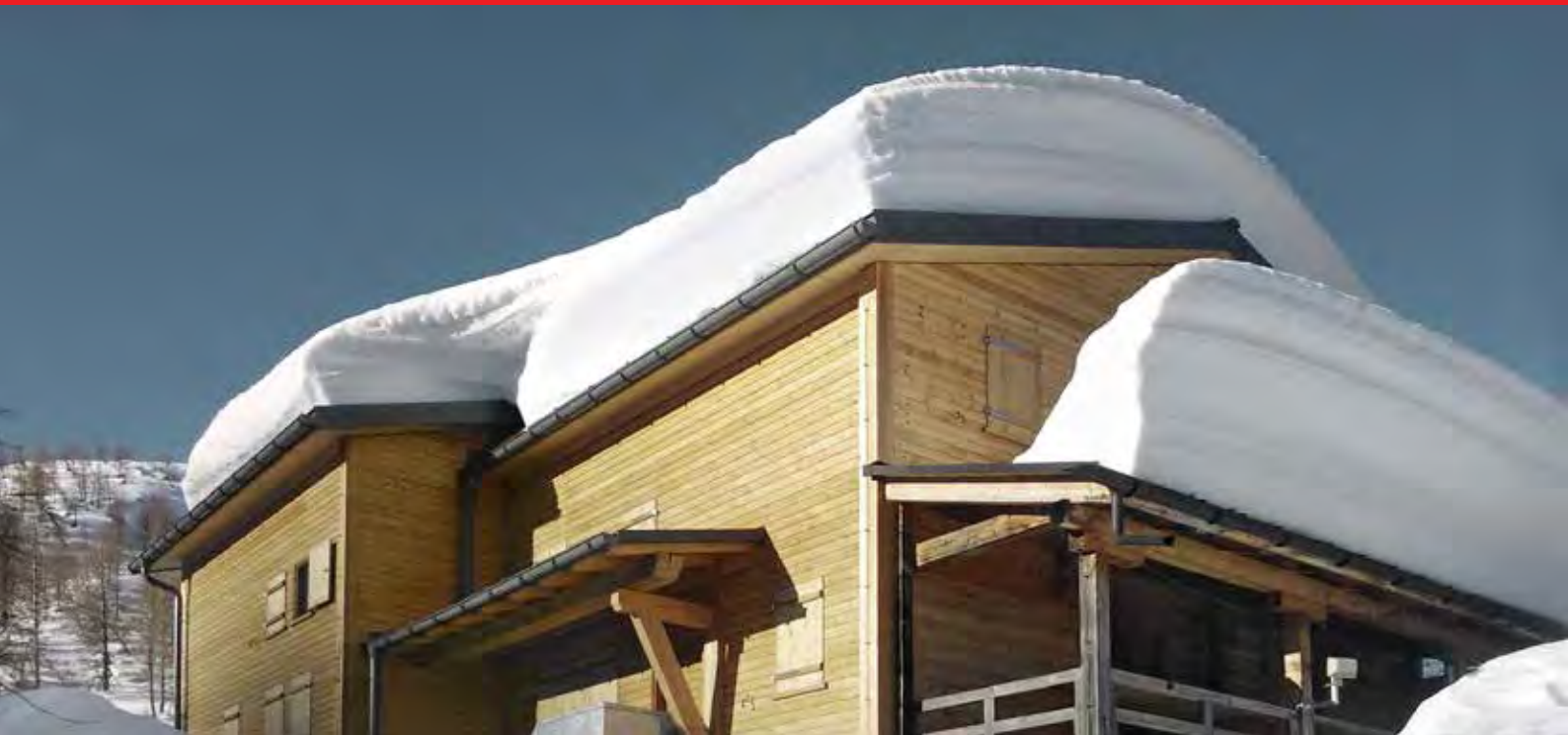
A promise that we even give you in writing and that your grandchildren will still be grateful for in years to come. PREFA provides a 40-year guarantee on the material and also on the colour for the P.10 surface. This provides you with optimum protection against frost damage, rust, breakage, chips and blistering. Another important point: PREFA roof systems are installed exclusively by trained professionals in order to ensure complete safety.

### QUALITY COLOUR-COATING

The special coating layers which are applied in the coil coating process are malleable and highly resistant to temperatures and weathering. Even if small areas get damaged, bare aluminium reacts with oxygen in the air to form a natural oxide layer. Thanks to its natural "second skin", PREFA products are guaranteed to remain rust-free.







## SAFETY IN HIGH SNOW LOADS

### With the right system for every roof

Due to its low dead weight, a PREFA aluminium roof is the ideal roof covering in snowy conditions. The weight of snow is often underestimated. Just 20 centimetres of snowfall is enough to load a roof with a weight of several tonnes. However, snow drifts, which only load the roof on one side, can also compromise the building's entire structural safety. The snow load, which is specific to the location or commonly accepted for the type of building, should already be calculated by a trained craftsman or structural engineer during the roof structure planning phase, and taken into account in the design.

### PREVENTING SNOW FROM SLIDING OFF THE ROOF

Measures to prevent snow from sliding off the roof, which can endanger people passing by, should also be borne in mind. In principle, the owner of the building is liable for any damage caused by snow sliding off the roof. Possible danger can be reduced by attaching appropriate protective devices (snow brackets, snow guards).





## MAXIMUM STORM PROTECTION

### Secure fastening even in exposed positions

Ripped off roofs, destroyed façades and fallen trees — depending on its strength, a storm can cause major damage to a building and its surroundings. When wind speeds exceed around 75 km/h, this is referred to as a storm. It's not only major damage such as a roof being ripped off in a storm, but also other damage such as a leaking roof and damaged tiles that can wreak havoc on a home. The resulting costs can be high.

### PARTICULARLY EXPOSED AREAS

In high-risk regions, the installation can be adapted to special requirements by taking additional measures. In exposed areas, the number of fasteners is increased if necessary and the type of fastening (nails or screws) is adapted to the wind load.



Fastening with PREFA patent clips

### UNIQUE FASTENING TYPES

PREFA's small-format roof and façade products owe their high storm-resistance to the well thought-out, concealed fastening types as well as to the flat lock installation system. The elements are either attached directly to the integrated fastening strip or fixed to the fully boarded substrate with clips. This means that a PREFA roof or façade can withstand even high wind speeds.





## THE RAINSCREEN — A BRIEF EXPLANATION

It's not without good reason that the façade cladding system known as the "rainscreen" or "ventilated façade" has been used for centuries in harsh climates.

A characteristic feature of the rainscreen is the optimal separation of the weatherproof outer layer and the insulated supporting structure.

Any moisture is channelled through this cavity, ensuring a comfortable indoor climate.

Further major advantages of the rainscreen system are the virtually limitless creative freedom that it offers, and the particularly long service life that it brings to façades.

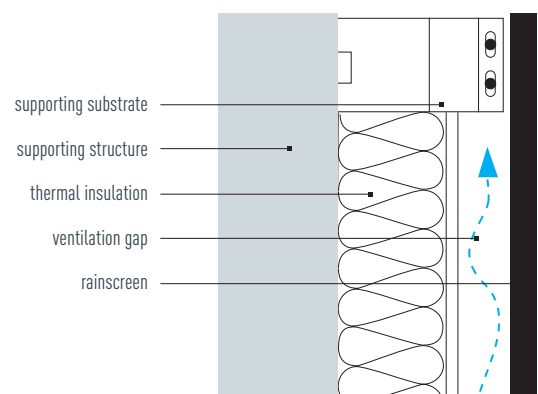
## HOW THE RAINSCREEN CLADDING SYSTEM WORKS

Basically, the rainscreen cladding system consists of four components: the supporting structure, thermal insulation, the supporting substrate and the rainscreen itself.

The thermal insulation reduces heat flow from the inside to the outside and vice versa, while also acting as sound insulation. In addition, the thermal insulation, which is generally made of mineral materials, varies in thickness (depending on the thermal performance to be achieved), and is protected from external weather conditions.

The supporting substrate forms the connection between the supporting structure and the façade cladding. A metal supporting substrate makes it possible to compensate for any unevenness in the supporting structure in a way which is free of stress and in the long term.

The rainscreen cladding system serves, on the one hand, to protect the supporting structure from the rain and weather, and, on the other, as a design element on new builds and renovated properties.



# ROOF STRUCTURE

## ALUMINIUM ROOFS WITH A VENTILATED SUPPORTING SUBSTRATE

Ventilated roof structures have been used for many decades and have proven themselves in all climatic conditions. That's why PREFA recommends constructing aluminium roofs with a ventilated supporting substrate. The roof covering and thermal insulation layers are separated by a ventilated gap. The advantage of this is that any moisture that may occur, e.g. due to condensation or moisture caused by occupancy diffusing from the interior rooms, is removed again. In principle, the roof covering is ventilated (see figure 1). However, the entire attic can be ventilated too (see figure 2).

Figure 1

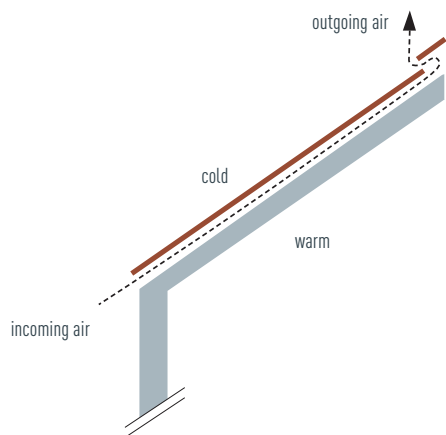
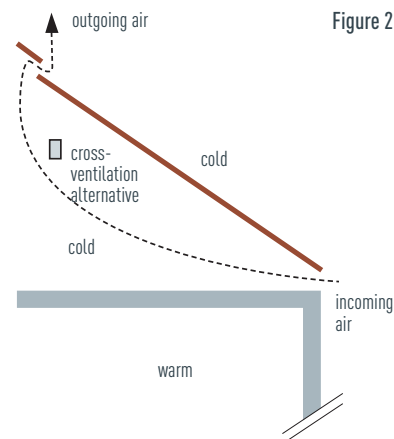
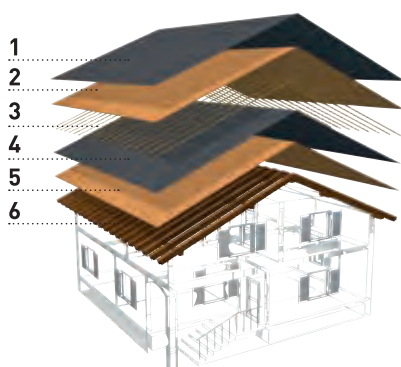


Figure 2

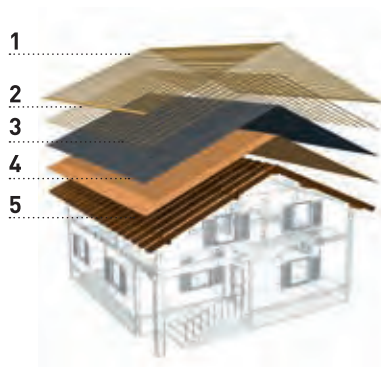


### THE ATTIC CAN ALSO BE USED AS LIVING SPACE

Compared to a single-skin roof structure, a ventilated channel is added to the double-skin roof structure (counter battens). This makes it possible to also thermally insulate between the rafters (straightforward creation of an attic extension at a later stage).



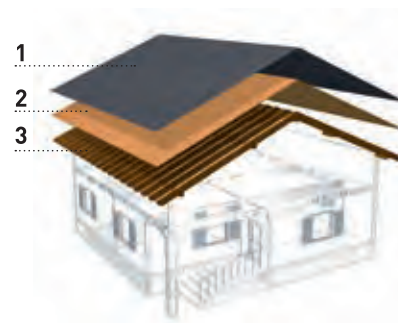
1. separation layer
2. fully boarded substrate
3. counter battens
4. roof underlay
5. fully boarded substrate
6. rafters



1. battening (only with PREFA roof tiles)
2. counter battens
3. roof underlay
4. fully boarded substrate
5. rafters

### THE ATTIC IS NOT USED AS LIVING SPACE

With this type of roof structure, the attic ceiling must be thermally insulated (complicated creation of an attic extension at a later stage).

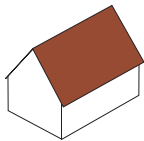


1. roof underlay
2. fully boarded substrate
3. rafters

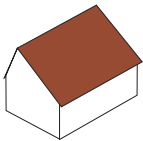
- The roof structure must be designed according to building physics criteria (e.g. thermal insulation, airflow).
- The arrangement and dimensioning of the air inlet and outlet vents must be planned and implemented according to building physics requirements.
- Non-ventilated structures should be quoted for and designed separately.
- In principle, the use of continuous air inlet and outlet vents is preferable to static vents.
- Attention must be paid to the minimum roof pitch required for the product being used.
- The need and requirements for the underlay according to national standards and specialist guidelines must be taken into account.



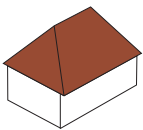
# ROOF SHAPES



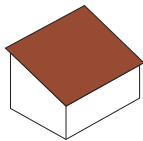
GABLE ROOF



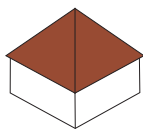
SALTBOX ROOF



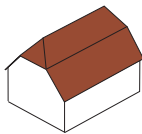
HIP ROOF



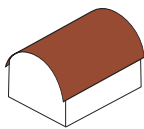
MONO-PITCHED ROOF



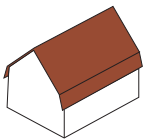
SQUARE HIP ROOF



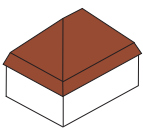
CLIPPED-GABLE ROOF



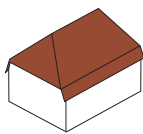
BARREL ROOF



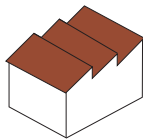
MANSARD ROOF



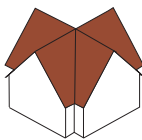
MANSARD HIPPED ROOF



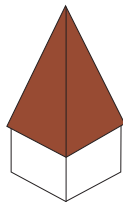
MANSARD ROOF  
WITH A HIPPED  
MAIN ROOF SURFACE



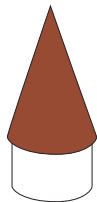
SAW TOOTH ROOF



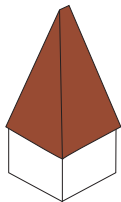
CROSS GABLED ROOF



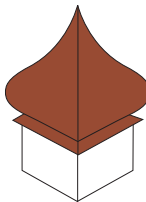
PYRAMIDAL ROOF



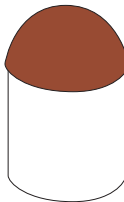
CONICAL ROOF



HIPPED TOWER ROOF

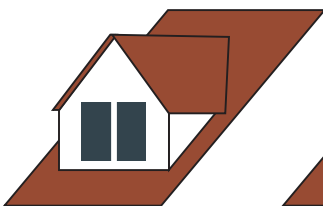


ONION DOME

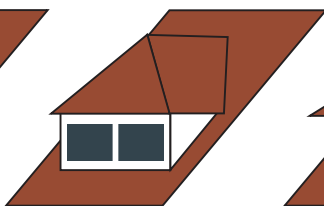


DOME

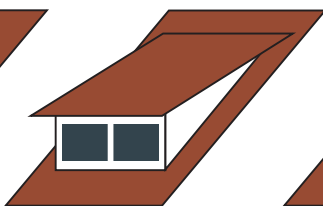
# DORMER SHAPES



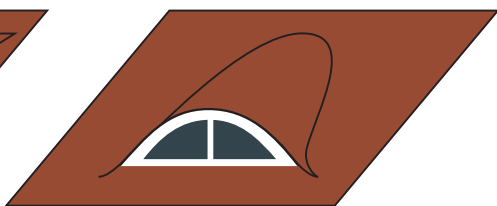
GABLE FRONTED DORMER



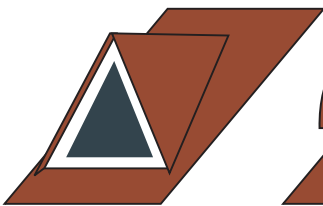
HIP ROOF DORMER



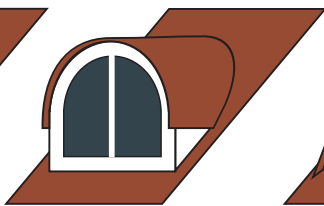
SHED DORMER



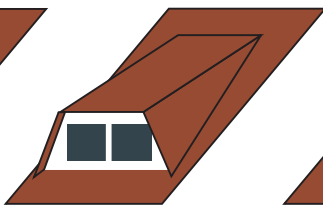
EYEBROW DORMER



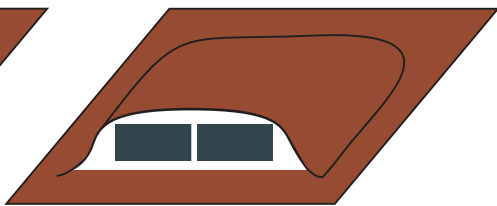
TRIANGULAR DORMER



BARREL ROOF DORMER








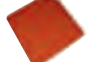


TRAPEZOIDAL DORMER

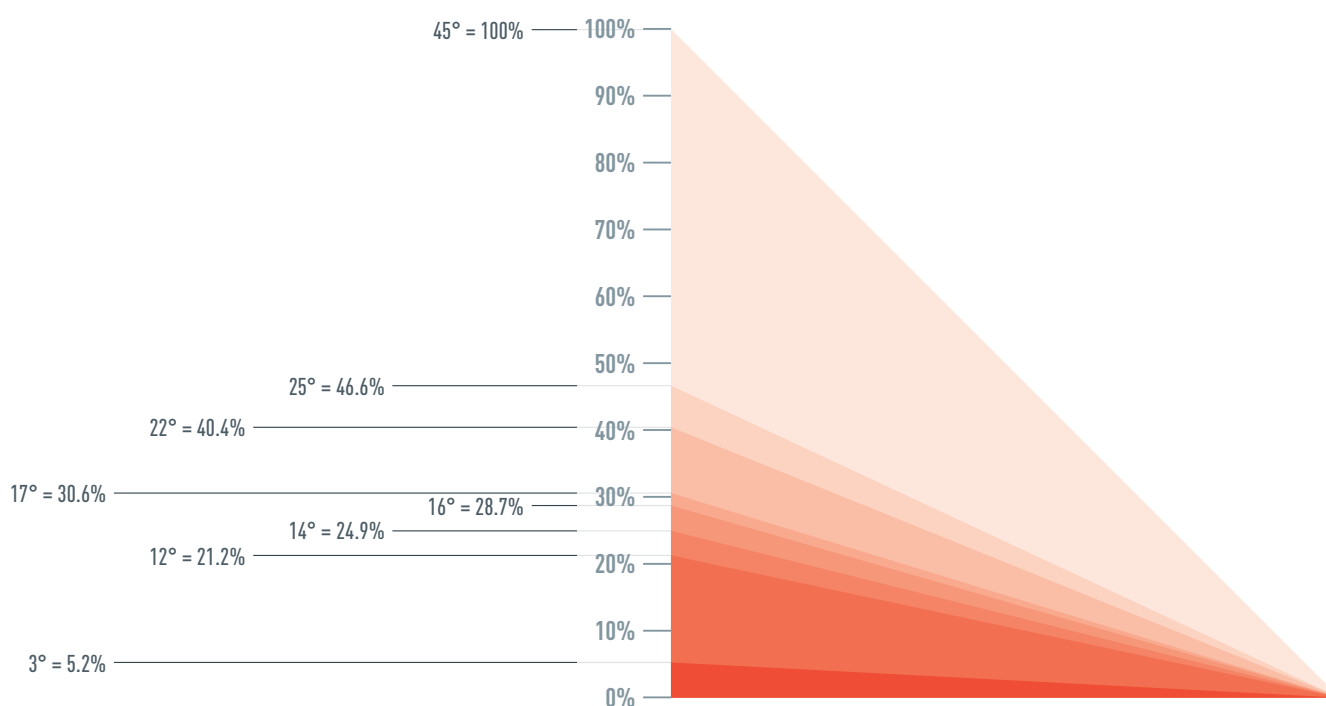


EYEBROW DORMER  
WITH STEEP CHEEKS

# ROOF PITCH

## MINIMUM ROOF PITCH

		≥ 3°	≥ 12°	≥ 14°	≥ 16°	≥ 17°	≥ 22°	≥ 25°
ROOF TILE			rafter length: < 7 m					
				rafter length: 7–12 m				
					rafter length: > 12 m			
R.16 ROOF TILE						up to 25°: only with a separation layer		
SHINGLE								
DS.19 SHINGLE						up to 25°: only with a separation layer		
RHOMBOID ROOF TILE 29 × 29								
RHOMBOID ROOF TILE 44 × 44			rafter length: < 7 m					
				rafter length: 7–12 m				
					rafter length: > 12 m			
FX.12 ROOF PANEL						up to 25°: only with a separation layer		
PREFALZ		Restrictions and deviations according to national standards and specialist guidelines and PREFA's installation instructions must be taken into account.						







## ROOF

### SMALL FORMAT PRODUCTS

		~ RAL	Roof tile	R.16 roof tile	FX.12 roof panel	Rhomboid roof tile 29 x 29	Rhomboid roof tile 44 x 44	Shingle	DS.19 shingle
01	P.10 brown	7013	•	•	•	•	•	•	•
02	P.10 anthracite	7016	•	•	•	•	•	•	•
03	P.10 black	9005	•	•	•	•	•	•	•
04	P.10 brick red	8004	•	•	•	•	•	•	•
05	P.10 oxide red	3009	•	•	•	•	•	•	•
06	P.10 moss green	6005	•	•	•	•	•	•	•
07	P.10 light grey	7005	•	•	•	•	•	•	•
11	P.10 nut brown	8019	•	•	•	•	•	•	•
19	P.10 dark grey	7043	•	•	•	•	•	•	•
43	P.10 stone grey <sup>1</sup>	7031	•	•	•	•	•	•	•



## ROOF DRAINAGE

		~ RAL	Half-round gutter 250   280   333	Half-round gutter 400	Box gutter 250	Box gutter 333	Box gutter 400	Box gutter 500	On-roof gutter	Square downpipe
01	P.10 brown	7013	•	•	•	•	•	•	•	•
02	P.10 anthracite	7016	•	•	•	•	•	•	•	•
03	P.10 black	9005	•	•	•	•	•	•	•	•
07	P.10 light grey	7005	•	•	•	•	•	•	•	•
10	P.10 PREFA white	9002	•	•	•	•	•	•	•	•
11	P.10 nut brown	8019	•	•	•	•	•	•	•	•
19	P.10 dark grey	7043	•	•	•	•	•	•	•	•
01	brown	7013	•	•	•	•	•	•	•	•
02	anthracite	7016	•	•	•	•	•	•	•	•
04	brick red	8004	•	•	•	•	•	•	•	•
05	oxide red	3009	•	•	•	•	•	•	•	•
06	moss green	6005	•	•	•	•	•	•	•	•
07	light grey	7005	•	•	•	•	•	•	•	•
08	zinc grey	7030	•	•	•	•	•	•	•	•
12	metallic silver <sup>3</sup>	9006	•	•	•	•	•	•	•	•
13	plain aluminium <sup>1/2</sup>	—	•	•	•	•	•	•	•	•

The PREFA square downpipe is kept in stock as standard in the P.10 colours of 01 brown, 02 anthracite, 07 light grey, 12 metallic silver and 13 plain aluminium, but can also be supplied in all RAL colours. Please allow for longer delivery times and a surcharge.

## NOTE

### GENERAL INFORMATION

- The colours P.10 stone grey, P.10 sand brown, P.10 rust brown, P.10 patina green, natural oak, patina grey, walnut, grey oak and plain aluminium are based on natural colours and therefore vary slightly in shade, giving the product its distinctive character.
- The guarantee does not cover surface appearance alterations caused by processing and environmental influences. Follow the instructions.
- The metallic colours may exhibit colour variations.

### CAUTION:

- The RAL numbers indicated are approximations only [~], and may, in some cases, differ greatly from the PREFA original colour. They may not be a true reflection of the subjective perception of colour.
- Particularly in the case of the P.10 paint quality, it is difficult to precisely define the number due to the nature of the surface structure. In addition, the colours P.10 stone grey, P.10 sand brown, P.10 rust brown, P.10 patina green, natural oak, patina grey, walnut and grey oak are based on natural colours made up of several different shades.

Therefore, we recommend obtaining original samples so that you can gain an idea of the exact colours of complementary components.

FOR CLEARER UNDERSTANDING,  
ALL NEW COLOURS FOR 2021 ARE INDICATED WITH .

## PREFALZ

		~ RAL	0.7 x 500 mm	0.7 x 1,000 mm	0.7 x 650 mm
01	P.10 brown	7013	•	•	•
02	P.10 anthracite	7016	•	•	•
03	P.10 black	9005	•	•	•
04	P.10 brick red	8004	•	•	•
05	P.10 oxide red	3009	•	•	•
06	P.10 moss green	6005	•	•	•
07	P.10 light grey	7005	•	•	•
08	P.10 zinc grey	7030	•	•	•
10	P.10 PREFA white	9002	•	•	•
11	P.10 nut brown	8019	•	•	•
12	metallic silver <sup>3</sup>	9006	•	•	•
13	plain aluminium <sup>1/2</sup>	—	•	•	•
17	P.10 pure white	9010	•	•	•
19	P.10 dark grey	7043	•	•	•
23	black grey	7022	•	•	•
43	P.10 stone grey <sup>1</sup>	7031	•	•	•
45	bronze <sup>3</sup>	7048	•	•	•
46	P.10 patina green <sup>1</sup>	6027	•	•	•
47	patina grey <sup>1</sup>	7042	•	•	•



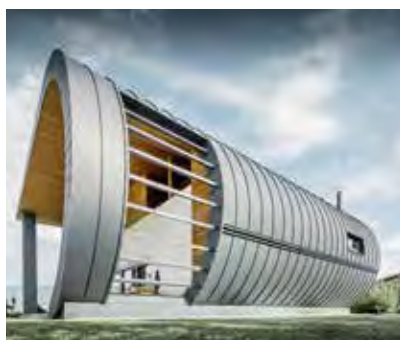
## FAÇADE SIDING | SIDING.X

		~ RAL	Siding 138 × 0.7 mm	Siding 200 × 1.0 mm	Siding 300 × 1.2 mm	Siding 400 × 1.2 mm	Siding.X 200   300   400 × 1.0 mm
01	P.10 brown	7013	•	•	•	•	•
02	P.10 anthracite	7016	•	•	•	•	•
03	P.10 black	9005	•	•	•	•	•
04	P.10 brick red	8004	•	•			•
05	P.10 oxide red	3009	•	•			•
06	P.10 moss green	6005	•	•			•
07	P.10 light grey	7005	•	•	•	•	•
10	P.10 PREFE white	9002	•	•			•
11	P.10 nut brown	8019	•	•			•
12	metallic silver <sup>3</sup>	9006	•	•	•	•	•
17	P.10 pure white	9010	•	•	•	•	•
19	P.10 dark grey	7043	•	•	•	•	•
20	smoke silver <sup>3</sup>	9007		•			•
21	ruby red	3003		•			•
23	black grey	7022		•	•	•	•
25	ivory	1015	•	•			•
38	walnut <sup>1</sup>	8025	•	•			
39	grey oak <sup>1</sup>	7032	•	•			
40	natural oak <sup>1</sup>	1011		•			
41	P.10 rust brown <sup>1</sup>	8015	•	•			•
42	P.10 sand brown <sup>1</sup>	1019	•	•			•
43	P.10 stone grey <sup>1</sup>	7031	•	•	•	•	•
45	bronze <sup>3</sup>	7048		•			•
47	patina grey <sup>1</sup>	7042	•	•			•



## FAÇADE SMALL FORMAT PRODUCTS

		~ RAL	FX.12 façade panel	Rhomboid façade tile 29 × 29   44 × 44	Rhomboid façade tile 20 × 20	Façade shingle
01	P.10 brown	7013	•	•	•	•
02	P.10 anthracite	7016	•	•	•	•
03	P.10 black	9005	•	•	•	•
04	P.10 brick red	8004	•	•	•	•
05	P.10 oxide red	3009	•	•	•	•
06	P.10 moss green	6005	•	•	•	•
07	P.10 light grey	7005	•	•	•	•
08	P.10 zinc grey	7030			•	
10	P.10 PREFE white	9002	•		•	
11	P.10 nut brown	8019	•	•	•	•
12	metallic silver <sup>3</sup>	9006	•		•	
19	P.10 dark grey	7043	•	•	•	•
25	ivory	1015	•		•	
41	P.10 rust brown <sup>1</sup>	8015	•			
42	P.10 sand brown <sup>1</sup>	1019	•			
43	P.10 stone grey <sup>1</sup>	7031	•	•	•	•



## PREFABOND WITH FR CORE (FIRE RETARDANT)

		~ RAL	4,010 × 1,535 × 4 mm
02	P.10 anthracite	7016	•
03	P.10 black	9005	•
10	P.10 PREFE white	9002	•
11	P.10 nut brown	8019	•
12	metallic silver <sup>3</sup>	9006	•
17	pure white	9010	•
19	P.10 dark grey	7043	•
20	smoke silver <sup>3</sup>	9007	•
21	ruby red	3003	•
23	black grey	7022	•
44	matt anthracite	7016	•
45	bronze <sup>3</sup>	7048	•
48	dark titanium <sup>3</sup>	7013	•



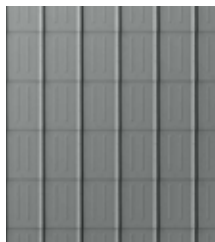


## THE PREFA PRODUCT RANGE — ROOF AND FAÇADE

### ROOF TILE



600 × 420 mm (cover)



### R.16 ROOF TILE



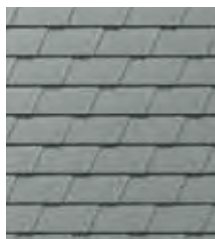
700 × 420 mm (cover)



### DS.19 SHINGLE



480 × 262 mm (cover)



### ROOF AND FAÇADE SHINGLE



420 × 240 mm (cover)



### RHOMBOID ROOF AND FAÇADE TILE

44 × 44: 437 × 437 mm (cover)



29 × 29: 290 × 290 mm (cover)



20 × 20: 200 × 200 mm (cover)



### FX.12 ROOF AND FAÇADE PANEL



700 × 420 mm (cover)



1,400 × 420 mm (cover)



### PREFALZ



#### STANDARD DIMENSIONS

For roofs: 0.7 × 500 mm; 0.7 × 650 mm

For façades: 0.7 × 500 mm

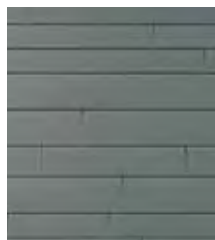
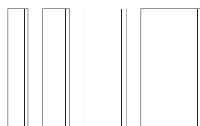
Complementary coil: 0.7 × 1,000 mm



## THE PREFA PRODUCT RANGE — FAÇADE

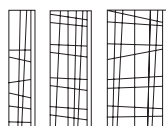
### SIDING

138 × 0.7 mm  
200 × 1.0 mm  
300 × 1.2 mm  
400 × 1.2 mm



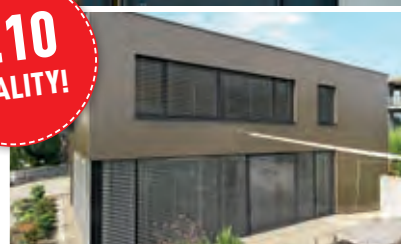
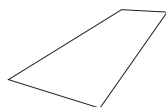
### SIDING.X

200 × 1.0 mm  
300 × 1.0 mm  
400 × 1.0 mm



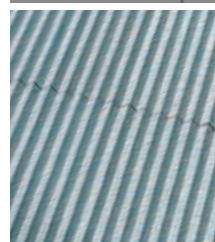
### PREFABOND ALUMINIUM COMPOSITE PANEL

4,010 × 1,535 × 4 mm



### EXTRUDED PROFILES

Ripple profile 10/47/2.0 mm  
Serrated profile 22/40/2.0 mm



## OTHER PREFA PRODUCT RANGES

### ROOF DRAINAGE

Half-round gutter 250/280/333/400 mm  
Box gutter 250/333/400/500 mm  
On-roof gutter 700 × 1.0 mm  
Square downpipe 100 × 100 mm  
Downpipe ø 60/ø 80/ø 100/ø 120/ø 150mm



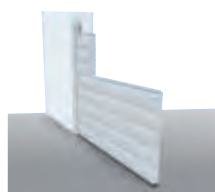
### PREFA SOLAR PANEL MOUNTING SYSTEM

Solar panel mounting system



### FLOOD PROTECTION SOLUTIONS

Property and perimeter protection







**THE ROOF  
AS STRONG AS A BULL**

## **STRENGTH IS OUR PROMISE.**

---

- Aluminium, the strong material for generations
- Perfectly coordinated complete systems
- Over 5,000 products in many colours and shapes
- 40-year guarantee\* on materials and colours
- Personal, all-round service at every stage

**LET'S TALK ABOUT IT.**

### **PREFA UNITED KINGDOM**

**PREFA UK LTD**

St. James House

13 Kensington Square • London W8 5HD

T +44 20 7795 8124

[OFFICE.UK@PREFA.COM](mailto:OFFICE.UK@PREFA.COM)

[UK.PREFA.COM](http://UK.PREFA.COM)

\* Information about the material and colour guarantee can be found at [uk.prefa.com/guarantee](http://uk.prefa.com/guarantee).