

# Snaplock Cladding and Roofing Data Sheet

The Snaplock Cladding and Roofing system is an evolution of the traditional hard metal roofing system. The system reduces on-site time and associated processes thanks to a quick and cost effective installation process.

Professionally manufactured off-site, it can be delivered in project specific tray lengths, reducing waste and scrap generated using other techniques. The Simplicity of the Snaplock Cladding and Roofing system makes for a straightforward installation.

Manufactured from lightweight corrosion resistant materials, this quick and ready to install system offers a durable low maintenance solution.

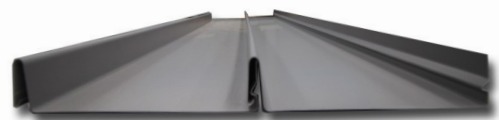
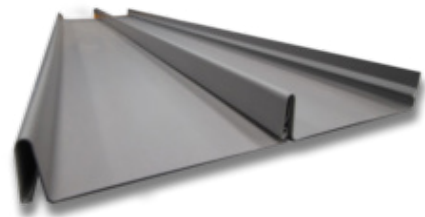
The Snaplock Cladding and Roofing system can be provided as a complete roof kit including all flashings, matching rainwater products and ancillaries. It is suitable for both roof and facade applications.

## Snaplock Cladding and Roofing Material Availability:

- VM Zinc, Rheinzink, Jarden Zinc 0.7mm BMT
- 0.55mm BMT COLORBOND® steel / ZINCALUME® steel / Metallic / Ultra
- 0.7mm BMT Copper
- 0.7mm BMT Aluminium

## General Requirements:

- Consists of continuous wall studs or top hats at max. 600mm spacing.
- Plywood 17mm structural to AS 2269.
- Fully breathable / waterproofed membrane.
- Fix snap lock clips at max. 300mm centres.



[www.acladding.com.au](http://www.acladding.com.au)

## Architectural Cladding Suppliers

Factory 1 / 3 Concord Cres,  
Carrum Downs Vic 3201

PO Box 688  
Patterson Lakes Vic 320

Phone: 03 9775 1097  
Email: [admin@acladding.com.au](mailto:admin@acladding.com.au)  
Web: [www.acladding.com.au](http://www.acladding.com.au)



# Snaplock Cladding and Roofing Data Sheet

The Snaplock Cladding and Roofing system is suitable for residential and commercial applications. This system from Architectural Cladding Suppliers has concealed fixings and is suitable for external applications for both roofing and wall cladding.

## Features:

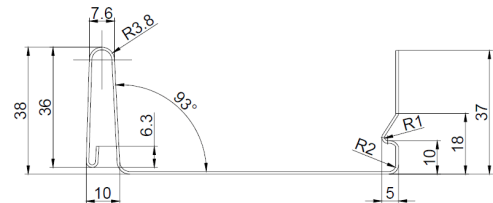
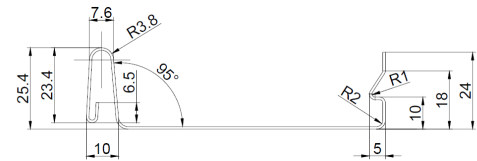
- Standing seam look - provides for an aesthetically pleasing finish
- Fast installation - straightforward installation reducing on-site time and labour costs
- Light weight - low weight panels and low wastage of materials
- Complete kit - allows for matching flashings, rainwater products and ancillaries

## Benefits:

- Speedy installation – there is no requirement for automatic or manual seam closing making it a clever choice for more standard applications in both roofing and wall cladding applications.
- Flat appearance – there is no weight added to the panels, requiring no seams to close. Similar in appearance to that of standing seam with a wide tray and a neutral raised seam.
- Innovative – a revolutionary way of installing sophisticated cladding panels.
- Low Cost – due to minimum wastage of materials and time-saving installation approach.
- Dual Application – can be used for both roofing & wall cladding and ability to connect with continuous seam.

## Snaplock Cladding & Roofing

### Profile Dimensions



[www.acladding.com.au](http://www.acladding.com.au)

## Architectural Cladding Suppliers

Factory 1 / 3 Concord Cres,  
Carrum Downs Vic 3201

PO Box 688  
Patterson Lakes Vic 3201

Phone: 03 9775 1097  
Email: [admin@acladding.com.au](mailto:admin@acladding.com.au)  
Web: [www.acladding.com.au](http://www.acladding.com.au)

