



**FREUND®**  
*... your tool*



**SHEET METAL ROOFING TOOLS | ROOFING TOOLS**





For more than 160 years we have been pursuing a family tradition, namely the design and the manufacturing of our state of the art special handcrafted tools **MADE IN GERMANY** for the roofing, sheet metal, plumbing and carpentry industries. We are specialized in high quality, traditional and innovative hand tools for craftsmen working on roofing and sheet metal roofing.

Our longtime experience has certified our reputation as a leading manufacturer of the world's finest handmade tools used in the said industries.

Our objective is to allow craftsmen, by using our high quality ergonomical tools, to save time and money. By word of mouth, more and more craftsmen have joined forces with FREUND... your tool.

Our large and varied program includes thousands of tools in every design and size. Slate hammers, rippers, anvils with roofer's hammers, tile cutting pliers, manual scissors for cement tiles and fibers, hammers for plumbers, trowels, saws, knives, measuring tools, hatchets, axes, sheet metal scissors, special tools for roof and front walls, the list goes on ...

Concerning the manufacturing of top quality craftsmanship at FREUND, our tools are hand made, hand forged, heat treated, and we love our tools and our work. This has all contributed to FREUND's outstanding reputation.

We are ready to face any challenge regarding personal requirements that a customer might present us with and take pride in satisfying our customers with our innovative solutions.

**SHEET METAL ROOFING TOOLS**



**08 Edge Rollers**



**11 Clinching Pliers**



**14 Seaming Tongs**



**15 Folding Tools**



**19 Tin Snips**



**24 Pliers**



**25 Scrapers and Folding Pliers**



**26 Sheet Metal Hammers**



**29 Soldering Irons and Accessories**



**38 Pipe Expanders**

**ROOFING TOOLS**



**44 Slate Hammers**



**45 Anvils**



**45 Slate Cutters and Accessories**



**48 Slate Rippers**



**49 Roofer's Hammers**

**50 QR-Codes**

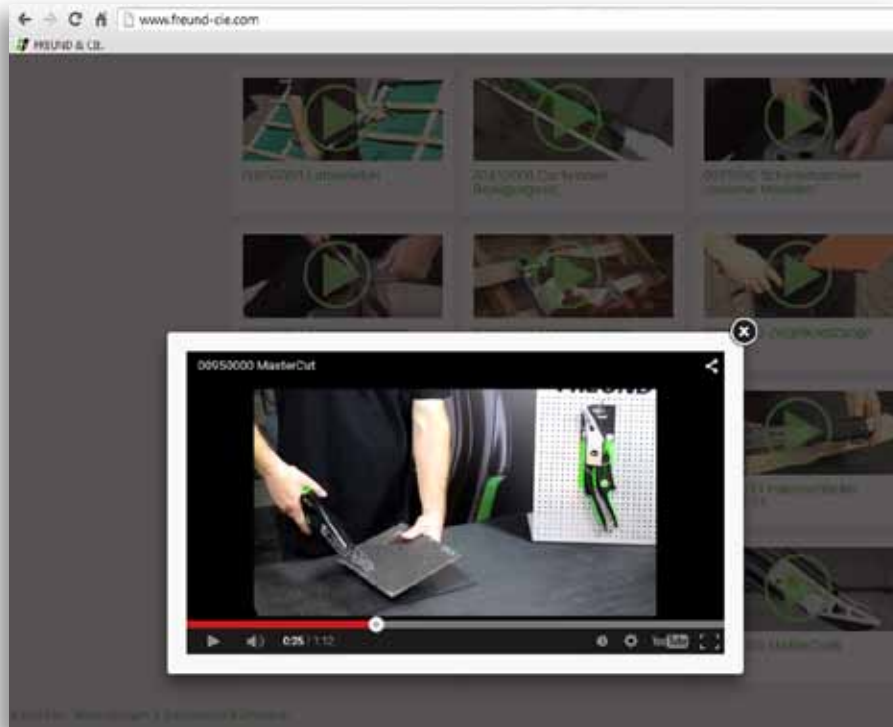
**54 Index**

**Edition 2016**



Daniel Schreiber, CEO FREUND  
Marcus Schnabel, CEO AMG

# APPLICATION-VIDEOS



## **QR STANDS FOR QUICK RESPONSE**

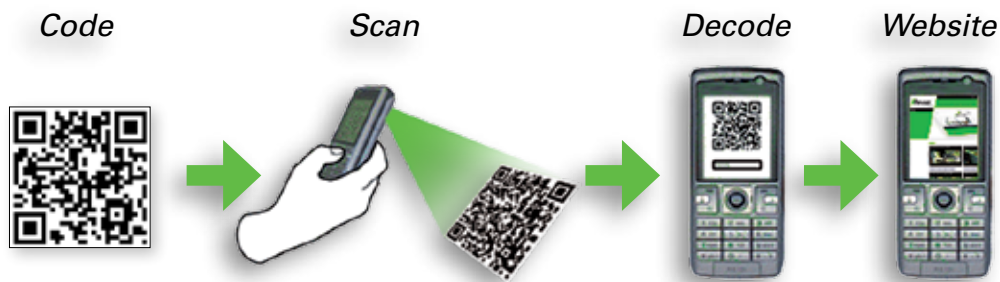
*The QR-code replaces the typing of internet addresses and therefore saves time. Instead of typing the information the QR-code is scanned.*

*All that is needed is a Java compatible mobile telephone or a smart phone with camera. A program in the telephone analyzes the scanned code and decodes the information.*

# QR-CODES



*And this is how it works...  
After scanning the QR-code you will be  
automatically forwarded to the selected  
application video.*



## MAKE YOUR TOOL **A FRIEND**

### **QR-CODE READER**

To be able to scan a QR-code using a smart-phone you will need a so-called Reader Software (QR-App). There are various suppliers for different phone models. Corresponding Apps can be downloaded for free under Android or in the App-Store.

Items with this symbol  will refer to the corresponding QR-code or relevant link.



## ***SHEET METAL ROOFING TOOLS ... FROM FREUND***

 **SHEET METAL ROOFER**  
 **MAKE YOUR TOOL A FRIEND**

### ***FROM "A" FOR ALUMINIUM TO "Z" FOR ZINC***

*... FREUND has the right sheet metal tool for every operational purpose. Whether for aluminium, lead, copper or zinc, we offer appropriate tools or a selection of tools in a box for every assignment and purpose.*



**FREUND®**  
... your tool



### **SHEET METAL ROOFING TOOLS**

#### **METAL - WORKING HAMMERS**

*Hand-made, precisely forged all the way through to the hand-finished polish of the hammer shaft. Together, with flat scrapers, angle flat scrapers, hatchet punches, tinman's anvils and other sheet metal tools, these are top quality products for a perfect application.*

#### **PLIERS AND SEAMING TONGS**

*The right pliers for every job. All our specialized tools are hand-made, hardened jaws and splits, honed and varnished. In addition, customized fabrications of specialized pliers are no problem for us.*

#### **METAL SNIPS AND SHEARS**

*All of our metal snips and shears are designed for a hard and professional job. It doesn't matter if it's a steel- or a HSS-snip, straight, right or left, with or without compound leverage, you choose the right snip for your job from our extensive assortment.*



## **MAKE YOUR TOOL *A FRIEND***

- ✓ ***Easy edging and bending of sheet metal***
- ✓ ***Mobile Edge Rolling Machines applicable with all prevalent materials***
- ✓ ***Affordable and versatile***
- ✓ ***Sheet thicknesses:***
  - zinc, aluminium: 19 Gauge*
  - copper: 22 Gauge*
  - steel: 23 Gauge*
  - stainless steel, rust-proof: 26 Gauge*



**01 FREUND DISK ROLLER**

Bends 90° profiles to maximum 180°, bending height: min. 3/8" max. 1 5/8," no alignment or adjustment work necessary, expandable with a second Disk Roller and adapter to become a Double Disk Roller, bends sheets with the max. of 20 gauge strength, application of eaves and gutter flashings, alterations, etc.



QR-code page 50

91611000

2.05 lb

6 3/4" x 2 1/4"

1

**02 FREUND DISK ROLLER DOUBLE**

Bends 90° profiles to maximum 180°, bending height: min. 3/8" max. 1 5/8," no alignment or adjustment work necessary, bends sheets with the max. of 20 gauge strength, application of eaves and gutter flashings, alterations, etc.



QR-code page 50

91610000

6.04 lb

6 3/4" x 9 1/8"

1

**03 FREUND RADIUS ROLLER 25**

For edging curved sheet metal and producing tight radii (inner and outer radii), the handle has been constructed for an optimal power transmission / compound leverage, measurements in both cm and inch, the bending height is infinitely adjustable, can bend from 1/4" – 1," sheet metal up to 22 gauge



Radius 25

91630000

1.92 lb

7 1/4" x 3 3/4"

1

**04 FREUND RADIUS ROLLER 50**

For edging curved sheet metal and producing tight radii (inner and outer radii), the handle has been constructed for an optimal power transmission / compound leverage, measurements in both cm and inch, the bending height is infinitely adjustable, can bend from 1/4" – 2," sheet metal up to 22 gauge



Radius 50

91631000

2.03 lb

8 3/4" x 3 3/8"

1

**05 FREUND STANDARD EDGE ROLLER**

Easy-to-read scale (mm + inch), loops to hang from work belt, expandable with a second Standard Edge Roller and adapter to become a dual bending machine, bending height: 1/4" – 7 7/8," suitable for small radii



QR-code page 50

91602000

3.07 lb

11 3/4" x 4 3/8"

1



## 06 FREUND STANDARD EDGE ROLLER DOUBLE

Easy-to-read scale (mm + inch), loops to hang from work belt, bending height: 1/4" – 7 7/8"



QR-code page 50

91620000	7.72 lb	14 5/8" x 8 1/8"	1
----------	---------	------------------	---



## 07 FREUND MAXI EDGE ROLLER

Mobile edge rolling machine for the edging and bending of sheet metal, equipped with four guiding rollers, easy-to-read scale (mm + inch), hand grip, expandable with a second Maxi-Edge Roller and adapter to become a dual bending machine, loops to hang from work belt, bending height: 1/4" – 13 3/4"

91604000	5.12 lb	17 3/4" x 5 1/8"	1
----------	---------	------------------	---



## 08 FREUND MAXI EDGE ROLLER DOUBLE

Mobile edge rolling machine for the edging and bending of sheet metal, equipped with four guiding rollers, easy-to-read scale (mm + inch), loops to hang from work belt, bending height: 1/4" – 13 3/4"

91604100	9.81 lb	19 1/4" x 9"	1
----------	---------	--------------	---



## 09 FREUND PREMIUM EDGE ROLLER

Equipped with four guiding rollers, easy-to-read scale (mm + inch), loops to hang from work belt, expandable with a second Premium Edge Roller and adapter to become a dual bending machine, bending height: 1/4" – 7 7/8"



91603000	3.53 lb	11 3/4" x 5 1/8"	1
----------	---------	------------------	---



## 10 FREUND PREMIUM EDGE ROLLER WITH HAND GRIP

Mobile edge rolling machine for edging and bending of sheet metal, applicable to all prevalent materials, equipped with four guiding rollers, easy-to-read scale (mm + inch), loops to hang from work belt, hand grip, expandable with a second Premium Edge Roller and adapter to become a dual bending machine



QR-code page 50

91600000	4.29 lb	11 3/4" x 5 1/8"	1
----------	---------	------------------	---



**11 FREUND PREMIUM EDGE ROLLER DOUBLE**

Equipped with four guiding rollers, easy-to-read scale (mm + inch), loops to hang from work belt, bending height: 1/4" – 7 7/8"



91601000	8.60 lb	14 <sup>5</sup> / <sub>8</sub> " x 11 <sup>3</sup> / <sub>4</sub> "	1
----------	---------	---	---

**12 ADAPTER FOR FREUND EDGE ROLLER**

Adapter to become a dual bending machine

for Edge Roller Premium double

91600001	1.90 lb	13" x 7 <sup>1</sup> / <sub>8</sub> "	1
----------	---------	---------------------------------------	---

for Edge Roller Standard double

91600002	1.76 lb	13" x 5 <sup>1</sup> / <sub>2</sub> "	1
----------	---------	---------------------------------------	---

for Edge Roller Disc Roller double

91610001	2.32 lb	9 <sup>7</sup> / <sub>8</sub> " x 2"	1
----------	---------	--------------------------------------	---

for Maxi Edge Roller

91600004	2.64 lb	8 <sup>7</sup> / <sub>8</sub> " x 19 <sup>1</sup> / <sub>4</sub> "	1
----------	---------	--	---

**13 HAND GRIP FOR FREUND EDGE ROLLER**

Hand Grip for FREUND Maxi-, Premium- and Standard Edge Roller

91600003	0.77 lb	11 <sup>3</sup> / <sub>4</sub> " x 4 <sup>3</sup> / <sub>8</sub> "	1
----------	---------	--	---

**14 FREUND PERFECT BENDER S-150**

0,63" stainless steel rods with laser marking, stainless steel ball bearings, bending wheel at 80° angles can be adjusted depending on the thickness of the materials, highest quality and functionality

91640000	2.87 lb	5,9"	1
----------	---------	------	---

**15 FREUND DISC ROLLER S-MODEL**

Bending from 90° - 180°, insertion depth from 0,32x1.0", material thickness up to 0,04" easy handling, perfect glide- and bending features

91612000	2.20 lb	5,5x3,9x4,7"	1
----------	---------	--------------	---



## 16 SMALL CLINCHING PLIERS

45° bent, lap joint, precoated handles



insertion depth

jaw width

QR-code page 51

1 1/8"	7/8"	01090022	0.42 lb	7/8"	1
--------	------	----------	---------	------	---



## 17 CLINCHING PLIERS

45° bent, lap joint, precoated handles



insertion depth

jaw width

QR-code page 50

1 7/8"	1 5/8"	01090040	1.32 lb	1 5/8"	1
1 7/8"	2 3/8"	01090060	1.54 lb	2 3/8"	1
1 7/8"	3 1/8"	01090080	2.04 lb	3 1/8"	1



## 18 CLINCHING PLIERS

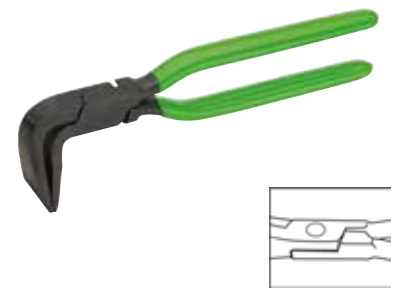
90° bent, lap joint, precoated handles

insertion depth

jaw width

QR-code page 50

2 1/8"	1 5/8"	01092040	1.32 lb	1 5/8"	1
2 1/4"	2 3/8"	01092060	1.65 lb	2 3/8"	1
2 5/8"	3 1/8"	01092080	2.32 lb	3 1/8"	1



## 19 CLINCHING PLIERS

45° bent, lap joint, precoated handles

insertion depth

jaw width

2 5/8"	3 1/8"	01090100	2.54 lb	3 1/8"	1
--------	--------	----------	---------	--------	---



## 20 SMALL CLINCHING PLIERS

Straight, lap joint, precoated handles

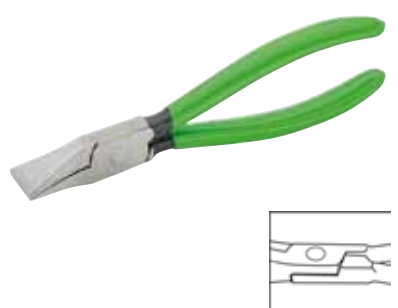


insertion depth

jaw width

QR-code page 51

1 1/4"	7/8"	01080022	0.4 lb	7/8"	1
--------	------	----------	--------	------	---



**21 CLINCHING PLIERS**

straight, lap joint, precoated handles



QR-code page 50

insertion depth

jaw width

1  $\frac{1}{8}$ "1  $\frac{5}{8}$ "

01080040

1.21 lb

1  $\frac{5}{8}$ "

1

2  $\frac{1}{2}$ "2  $\frac{3}{8}$ "

01080060

1.54 lb

2  $\frac{3}{8}$ "

1

2  $\frac{1}{2}$ "3  $\frac{1}{8}$ "

01080080

1.98 lb

3  $\frac{1}{8}$ "

1

**22 CLINCHING PLIERS**

Straight, lap joint, precoated handles



QR-code page 50

jaw width

staked joint 3  $\frac{1}{8}$ "

01100080

1.87 lb

3  $\frac{1}{8}$ "

1

lap joint 3  $\frac{1}{8}$ "

01100081

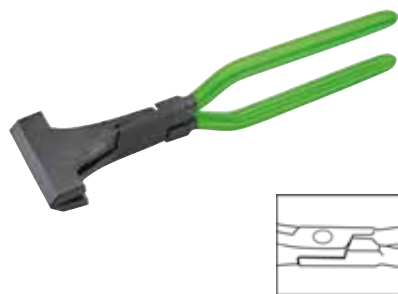
1.76 lb

3  $\frac{1}{8}$ "

1

**23 CLINCHING PLIERS**

Straight, lap joint, precoated handles



insertion depth

jaw width

2  $\frac{1}{4}$ "3  $\frac{7}{8}$ "

01080100

2.54 lb

3  $\frac{7}{8}$ "

1

**24 BROAD CLINCHING PLIERS**

Straight, lap joint, precoated handles



QR-code page 50

insertion depth

jaw width

2  $\frac{1}{4}$ "3  $\frac{7}{8}$ "

01080101

1.92 lb

3  $\frac{7}{8}$ "

1

**25 CLINCHING PLIERS, STAINLESS STEEL**

Straight, lap joint, especially for the treatment of stainless steel sheets, precoated handles



insertion depth

jaw width

1  $\frac{5}{8}$ "2  $\frac{3}{8}$ "

01080061

1.21 lb

2  $\frac{3}{8}$ "

1

## 26 ROUNDED CLINCHING PLIERS

Lap joint, precoated handles

insertion depth	jaw width				
1 5/8"	7/8"	01094018	1.10 lb	7/8"	1



## 27 UNIVERSAL CLINCHING PLIERS

Lap joint, precoated handles

insertion depth	jaw width				
2 5/8"	2 3/8"	01071300	1.76 lb	2 3/8"	1



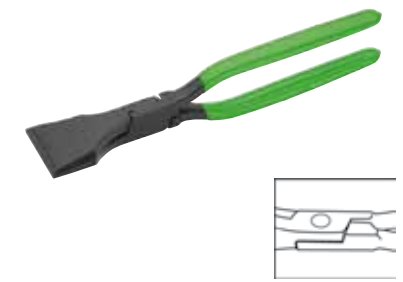
## 28 CORNER CLINCHING PLIERS

Lap joint, precoated handles



insertion depth	jaw width				
2 5/8"	2 3/8"	01170060	2.76 lb	2 3/8"	1

QR-code page 154



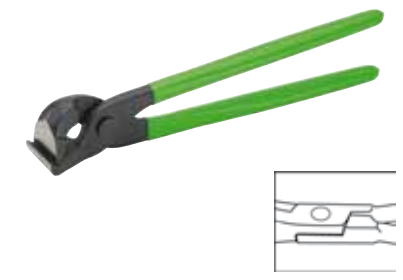
## 29 SEAM OPENING PLIERS

Lap-on joint, precoated handles



	jaw width				
	1 1/8"	01070250	0.99 lb	9 1/8"	1

QR-code page 51



## 30 FLAT NOSE PLIERS

Precoated handles



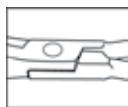
insertion depth					
1 3/4"		01370240	0.93 lb	9 1/2"	1

QR-code page 50



**31 TOOL ROLL WITH CLINCHING PLIERS**

High quality tool roll consisting of 1 x clinching pliers 2%", straight (no. Nr. 01080060), 1 x clinching pliers 2%", 45° angled, (no. 01090060), 1 x clinching pliers 2%", 90° angled (no. 01092060)



04670058

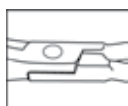
5.16 lb

92.1

1

**32 ROUND NOSE PLIERS**

Precoated handles



insertion depth

2 3/8"

QR-code page 51

01360240

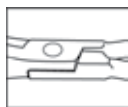
0.36 lb

9 1/2"

1

**33 SEAMING TONGS**

Straight, lap joint



insertion depth

jaw width

QR-code page 51

4 7/8"

4 3/4"

01141120

4.08 lb

4 3/4"

1

4 7/8"

4 3/4"

01141140

4.23 lb

4 3/4"

1

6 1/8"

6 1/4"

01141160

6.62 lb

6 1/4"

1

6 7/8"

7 1/8"

01141180

7.50 lb

7 1/8"

1

7 1/4"

7 1/4"

01141200

7.17 lb

7 1/8"

1



### 34 SEAMING TONGS

Straight, 45° tapered on one side



staked joint

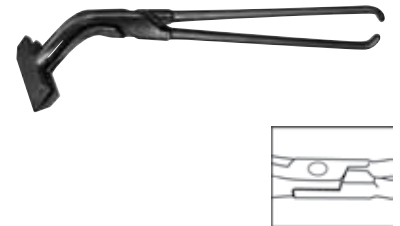
lap joint

insertion depth	jaw width				
staked joint	6 1/8"	01140181	7.50 lb	6 1/8"	1
lap joint	6 7/8"	01141181	7.50 lb	6 7/8"	1

### 35 SEAMING TONGS

Bent, lap joint

insertion depth	jaw width				
4 3/8"	4 3/4"	01161120	4.08 lb	4 3/4"	1
4 3/8"	4 3/4"	01161140	4.19 lb	4 3/4"	1
6 1/4"	6 1/4"	01161160	6.50 lb	6 1/4"	1
6 1/4"	7 1/8"	01161180	6.73 lb	7 1/8"	1
6 1/4"	7 7/8"	01161200	7.06 lb	7 7/8"	1

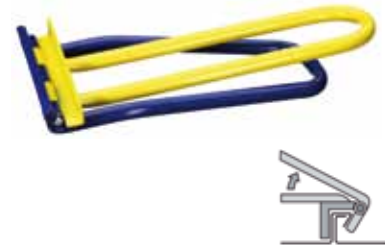


### 36 SQUARE SEAM FOLDER 111 WFSCH

This manually operated squareseamfolder joins SPM 30/80 profiles, smooth lead-on avoid marks at the transitions, it is easy to handle when working on extreme angular sheathing, the tool may also be used for vertical as well as for horizontal beads, tool width: 8 2/3", claw height: 2", length: 15 1/3"

QR-code page 52

durable baked epoxy finish	91100000	4.41 lb	8 2/3"	1
----------------------------	----------	---------	--------	---



### 37 SQUARE SEAM FOLDER, UPRIGHT 128 WFSCHST

For prefabricated SPM-profiles on small roof areas. For efficient use and transportation handles can be adjusted in length in 3 steps, tool width: 8 5/8", height: 28 3/8", length: 2 3/4"



QR-code page 52

durable baked epoxy finish	91101000	7.72 lb	8 5/8"	1
----------------------------	----------	---------	--------	---



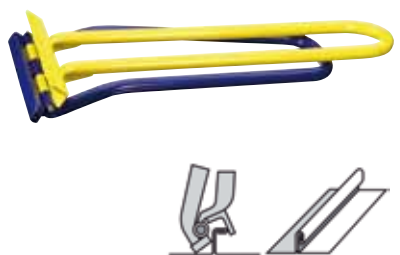
### 38 TWIN SQUARE SEAM FOLDER 117 WDF

It allows simple and quick shaping of locked squareseam into double-seam in just one operation, do not use to close a squareseam! Tool width: 8 2/3", clawheight: 2", length: 28 3/8"



QR-code page 52

durable baked epoxy finish	91170000	5.51 lb	8 2/3"	1
----------------------------	----------	---------	--------	---



**39 TWIN SQUARE SEAM FOLDER, UPRIGHT 131 WDFST**

For use like no. 91170000 Do not use to close a squareseam!  
Tool width: 8 2/3"; height: 2 3/4"; length: 28 1/3"



QR-code page 52

durable baked epoxy finish

91171000

7.94 lb

8 2/3"

1

**40 EAVES EDGER 105 TK**

Toolwidth of 10" allows quick and accurate sheet metal shaping constructing eaves, gutters, dormer windows etc., if needed a spacer can be put on at the eccentric pivot to create edges in excess of 90° as for high lips and waterbeads at inner eaves, tool width: 10"; clawdepth: 1 1/2"; length: 91/2"



QR-code page 50

durable baked epoxy finish

91070000

3.75 lb

10"

1

**41 EAVES CLOSING JAW 106 TSCA**

The jaw width of 8 3/4" enables quick and accurate folding of eaves sheet, tool width: 8 3/4"; height: 2 1/3"; length: 15 3/4"



QR-code page 50

durable baked epoxy finish

91080000

4.63 lb

8 3/4"

1

**42 EAVES RULER 120 TRL**

One time adjustable scale of required length of the sheet excess (incl. extension), Put eaves ruler to the edge of the eaves sheet, push along and mark out, then the cutted sheets can be folded cleanly with the eaves center or eaves closing tongs system Rau



QR-code page 50

durable baked epoxy finish

91230000

0.44 lb

4 3/4"

1

**43 SEMICIRCULAR DORMER SQUARESEAM FOLDER 119 RGS + 127 RGS**

The squareseam-folder is the ultimate tool joining prefabricated SPM-profiles. Even at dormer windows with a small radius one joins lockseam without difficulty, it can be used to tack up lengthwise beads to prevent withdrawal from folding press, tool width: 2 1/2"; height: 2 1/8"; length: 13"



119 RGS durable baked epoxy finish (long)

91180000

2.21 lb

12 3/8"

1

127 RGS durable baked epoxy finish (short)

91181000

1.98 lb

8 1/4"

1

#### 44 SHEETBENDING-JAW 101 BG 1010

Without difficulty leakproof and weldless gutters, ducts, high wallsheating, wallconnections etc. are constructed at the jobsite, unlimited working length, jaw width: 39 3/8", jawdepth: 31 1/2", tool depth: 4 1/3"

durable baked epoxy finish

91030000

30.87 lb

39 3/8"

1



#### 45 SHEETBENDING-JAW 102BG 500

Used like no. 91030000, jaw width: 19 5/8", jawdepth: 31 1/2", tooldepth: 4 1/3"

durable baked epoxy finish

91040000

15.21 lb

19 5/8"

1

 QR-code page 51



#### 46 TILE EDGER PEK

One gets a unique tool building any slope at tile edges, jaw length: 9 7/8", height: 1 1/2", tool length: 27 1/2"



durable baked epoxy finish

91150000

6.62 lb

9 7/8"

1



#### 47 TILE EDGER, SMALL 116 PEK

One gets an unique tool building at any slope for tile edges, jaw length: 2 3/4", height: 1 1/2", tool length: 14 1/4"



durable baked epoxy finish

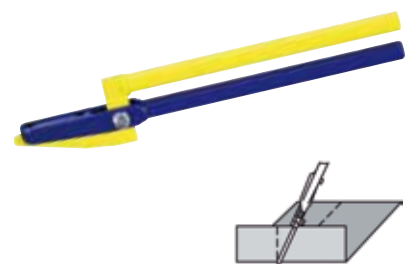
91160000

1.65 lb

2 3/4"

1

 QR-code page 52



#### 48 TINEDGE-JAWS 104 BKZ

Upright beads at double seam roofing are built effortless with the Tinedge-jaws, tool width is 19 3/4" and jawdepth selectable from 3/4" to 2 1/3", the upright bead is built into steps, first erect lip by 45° at its full length, then it is bend up to 90°, tool width: 19 3/4", length: 24 1/2", tong depth: 2 1/3"



durable baked epoxy finish

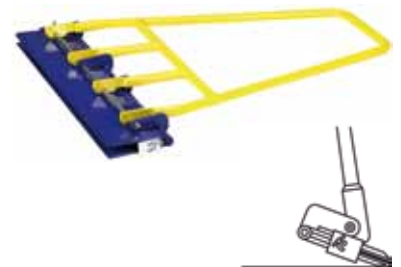
91010000

15.44 lb

19 3/4"

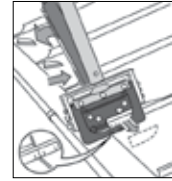
1

 QR-code page 52



**49 CLIPPING SHEARS SYSTEM 133 AKW**

These clipping shears are the optimal solution gaining time in getting an accurate finish of a gutter and eave. Clipping plain sheet, upright-seam and square-seam can be done, the AKW is easy to handle in the workshop as well as at the jobsite clipping preprofiled beads on the roof or at facades, after clipping the lower bead the upper one can be mounted and seamed, it may be clipped after roofing is complete, this allows effective work and the investment will pay for itself soon, tool width: 8 2/3", height: 4", length: 29 1/8"



QR-code page 50

durable baked epoxy finish

91190000

11.03 lb

8 2/3"

1

**50 HAND CUTTING SYSTEM HSG**

Particularly for exact and clean cuts on all kinds of sheet metal up to thickness of 21 gauge, cutting length 39 1/4", the set comprises: hand cutter, guide bar, gloves



91240000

2.65 lb

43 1/4"

1

**51 TWINSEAM FOLDER 112 DPF**

This tool makes a manual accurate lock-seam just by spreading the levers, dosed application of weight onto the implement relieves strain from the arms, cost saving of the twinseam-folder is without competition working small roof-areas and corner-constructions, the implement is independent of any current source, it's application starts at a 1 1/2"-2" seam height, tool width: 8 2/3", length: 33 1/2", width: 6 1/3"



durable baked epoxy finish

91060000

13.89 lb

8 2/3"

1

**52 SINGLE-HANDED-EDGER 108 HK**

Suitable for sheet metal up to 1/3" this is the all-round-tool for roofer, plumber, tin smith and panelbeater, adjustable stops support making edges from 1/4" to 3/4" freehand, with a tool width of 2 1/3" you bend sheet metal in any length, tool width: 2 1/8", height: 3 1/8", length: 11 5/8"



durable baked epoxy finish

91110000

1.54 lb

2 1/8"

1

**53 CRIMPER / FOLDING TONGS 114 FD**

This snaker is a unique tool tapering any tube caliber by setting a few pleats, most times just for 2 3/4" pleats make an accurate fitting, high stability of the joint tubes gained by a large supporting surface is the big advantage of this tool, tool length: 13 3/8", jaw depth: 2 3/4", width: 1 5/8"



durable baked epoxy finish

91020000

1.76 lb

13 3/8"

1

## WITH FREUND YOU WILL CUT WELL

### TYPES OF SNIPS

*Standard Snips -  
forged from a single piece;  
the cutting force is determined by the proportion of  
handle length to cutting length.*

*Snips with leverage -  
Cutting head and handle create mounted flexibly, so  
that a leverage is obtained. The leverage means that  
less force is required.*

### RIGHT CUTTING / LEFT CUTTING SNIPS

*Right snips allow an easy cutting of right circles.  
Left snips allow an easy cutting of left circles.*



#	cutting performance in gauge	
	zinc	stainless steel
01222251	18"	22"
01223251	18"	22"
01228476	18"	22"
01229476	18"	22"
01224276	18"	22"
01225276	18"	22"
01252261	18"	22"
01253261	18"	22"
01256281	18"	22"
01257281	18"	22"
01280240	15"	18"
01281240	15"	18"
01290240	15"	18"
01291240	15"	18"
01290260	15"	18"
01291260	15"	18"
01292260	15"	18"
01292261	15"	18"
01295260	15"	18"
01295261	15"	18"
01293260	15"	18"
01293261	15"	18"
01290180	20"	22"
01290181	20"	22"



#	cutting performance in gauge	
	zinc	stainless steel
01230301	18"	22"
01230351	18"	22"
01231301	18"	22"
01232301	18"	22"
01233301	18"	22"
01282240	18"	22"
01294260	15"	18"
01294261	15"	18"
01240251	18"	22"
01241251	18"	22"
01222251	18"	22"
01223251	18"	22"
01228476	18"	22"
01229476	18"	22"
01224276	18"	22"
01225276	18"	22"



straight, continuous



release



straight and right  
cutting



straight and left  
cutting



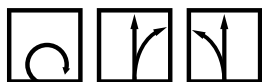
straight, right and  
left cutting



circular

**54 PUNCH SNIPS**

Stainless steel, HRC 59 (blue)



right

01222251

1.10 lb

9 $\frac{7}{8}$ "

1

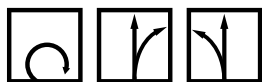
left

01223251

1.10 lb

9 $\frac{7}{8}$ "

1

**55 PUNCH SNIPS**HSS-special stainless steel with high carbide blades, HRC 65 (purple/black)  
for stainless steel sheets

right

01228476

1.12 lb

10 $\frac{7}{8}$ "

1

left

01229476

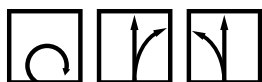
1.14 lb

10 $\frac{7}{8}$ "

1

**56 PUNCH SNIPS WITH CURVED BLADES**

Stainless steel, HRC 59 (blue)



right

01224276

1.10 lb

10 $\frac{7}{8}$ "

1

left

01225276

1.10 lb

10 $\frac{7}{8}$ "

1

**57 TINMEN'S/PELIKAN SNIPS**

PVC-coated handles, HRC 56 (green)



right

01230301

1.65 lb

11 $\frac{3}{4}$ "

1

right

01230351

1.83 lb

13 $\frac{3}{4}$ "

1

left

01231301

1.62 lb

11 $\frac{3}{4}$ "

1

**58 TINMEN'S/PELIKAN SNIPS**

Stainless steel, HRC 59 (blue)



right

01232301

1.61 lb

11 $\frac{3}{4}$ "

1

left

01233301

1.61 lb

11 $\frac{3}{4}$ "

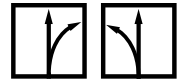
1



## 59 COMBINATION CUTTING SNIPS

Stainless steel, HRC 59 (blue)

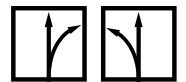
right	01252261	1.09 lb	10 1/4"	1
left	01253261	1.09 lb	10 1/4"	1



## 60 COMBINATION CUTTING SNIPS

Special stainless steel with high carbide blades, HRC 65 (purple/black)

right	01256281	1.32 lb	11"	1
left	01257281	1.35 lb	11"	1



## 61 GENUINE AVIATION SNIP

Stainless steel, compound leverage, for stainless steel sheets, HRC 58-60, bi-component grip



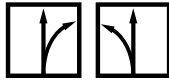
QR-code page 50

straight	01282240	0.63 lb	10 1/4"	1
----------	----------	---------	---------	---



**62 / GENUINE AVIATION SNIPS**

Stainless steel, compound leverage, for stainless steel sheets, HRC 58-60, bi-component grip



right

01280240

0.83 lb

9 1/2"

1

left

01281240

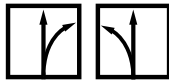
0.82 lb

9 1/2"

1

**63 / OFFSET CUTTING SNIPS**

Stainless steel, compound leverage, for stainless steel sheets, HRC 58-60, bi-component grip



right

01290240

0.86 lb

9 1/2"

1

left

01291240

0.86 lb

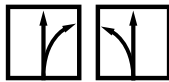
9 1/2"

1

QR-code page 51

**64 / OFFSET CUTTING SNIPS**

Stainless steel, compound leverage, for stainless steel sheets, HRC 58-60, bi-component grip



right

01290260

1.20 lb

10 1/4"

1

left

01291260

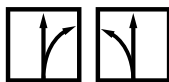
1.20 lb

10 1/4"

1

**65 / SHAPE AND STRAIGHT CUTTING SNIPS**

Special high quality steel, double compound leverage, for stainless steel sheets, HRC 61



right

01292260

0.99 lb

10 1/4"

1

left

01292261

0.99 lb

10 1/4"

1

QR-code page 51

**66 / SHAPE AND STRAIGHT CUTTING SNIPS**

Special high quality steel, double compound leverage, for stainless steel sheets, HRC 61



right

01294260

1.22 lb

10 1/4"

1

left

01294261

1.22 lb

10 1/4"

1

QR-code page 51



## 67 TOOL ROLL WITH GENUINE AVIATION SNIPS

High quality tool roll (129), consisting of Tinnman's snip, right (no. 01290240) and Genuine aviation snips, left (no. 01291240), tool roll (128) consisting of Genuine aviation snips, right (no. 01280240), Genuine aviation snips, left (no. 01281240) and Genuine aviation snips, straight (no. 01282240)



Tool Roll 129	04670059	1.98 lb	1,98	1
Tool Roll 128	04670060	2.70 lb	1,98	1



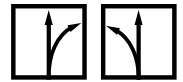
## 68 OFFSET CUTTING SNIPS

HSS-stainless steel, compound leverage, for stainless steel sheets, HRC 65



QR-code page 51

right	01295260	1.15 lb	10 1/4"	1
left	01295261	1.15 lb	10 1/4"	1



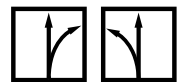
## 69 OFFSET CUTTING SNIPS

Special high quality steel, double compound leverage, for stainless steel sheets, HRC 61



QR-code page 51

right	01293260	1.06 lb	10 1/4"	1
left	01293261	1.06 lb	10 1/4"	1

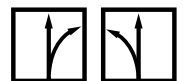


## 70 OFFSET CUTTING SNIPS „MINI“

Special high quality steel, double compound leverage, for stainless steel sheets, HRC 61

QR-code page 51

right	01290180	0.88 lb	7 1/8"	1
left	01290181	0.88 lb	7 1/8"	1



## 71 UNIVERSAL TIN SNIPS, LONGSTYLE PROFESSIONAL

Compound leverage, PVC-coated handles

right	01240251	0.99 lb	11"	1
left	01241251	0.99 lb	11"	1



**72 NOTCH-PUNCHING MACHINE**

Ideal for notching vinyl sheet coated, zinc or aluminum, makes a notch of 1/8" x 5/8," adjustable depth stop from 3/8"-7/8," punches up to a thickness of 22 gauge


[QR-code page 51](#)

00360020

1.82 lb

12 3/4"

1

**73 PUNCHING MACHINE**

With replaceable punches, opening 3/8," precise graduation, adjustable depth stop up to 1 3/4," with punches



Punch	ø .13 inch	ø .16 inch	ø .19 inch	ø .24 inch
iron sheets	16 Gauge	16 Gauge	18 Gauge	22 Gauge
stainless steel	18 Gauge	20 Gauge	22 Gauge	25 Gauge
aluminium	11 Gauge	14 Gauge	14 Gauge	16 Gauge

[QR-code page 51](#)

00360010

2.13 lb

10 3/4"

1

**74 HAND NOTCHER 35**

For straight and parallel incisions eg. square seam folding on wall connection edges, the notching length of 3/8" enables continuous uninterrupted cuts, suitable for sheet steel up to 22 gauge


[QR-code page 50](#)

00371000

1.17 lb

11 3/4"

1

**75 HAND NOTCHER**

For light and easy profile cuts no matter how deep. Cuts sheet steel up to a thickness of 22 gauge



00370000

0.60 lb

9 1/16"

1

**76 SCRIBER/SCRATCH/MARKING TOOL**

Stainless steel, American scale 1/8" - 4 3/4" inch (in)


[QR-code page 51](#)

01133000

0.14 lb

5 1/2"

1



## 77 FLIZ-FOLDER

Stainless steel, for bending sheet metal



QR-code page 50

01131000	0.66 lb	5 1/2" x 4 3/4"	1
----------	---------	-----------------	---



## 78 FLAT SCRAPER

Steel forged, long blade, prism 3/4" x 3/4" slightly slanted, 1/4" drilled

01150100	4.08 lb	3 7/8"	1
----------	---------	--------	---



## 79 FLAT SCRAPER

Forged, long blade, prism 1"x1" slightly slanted, 1/4" drilled



01150000	5.51 lb	5 1/2"	1
----------	---------	--------	---



## 80 DOUBLE WELT IRON

Forged, prism height 1" and 1 3/8"



QR-code page 50

01110000	7.50 lb	5 1/2"	1
----------	---------	--------	---



## 81 SQUEEZING FOLDING PLIER

Forged of special steel, depth 5 1/2"



QR-code page 52

01130000	1.87 lb	5 1/2"	1
----------	---------	--------	---



**82 / HAMMER FOR ANGLE FLAT SCRAPER**

Polished finish

 $A=7\frac{1}{8}" / B=1\frac{1}{8}"$ 

01121000

10.58 oz

4 $\frac{3}{4}"$ 

1

**83 / ANGLE FLAT SCRAPER**

Forged, polished and ground surfaces



QR-code page 50

01120000

3.42 lb

11 $\frac{5}{8}"$ 

1

**84 / GROOVING HAMMER, DIFFERENT FACES**

Differently curved faces, one face vertical, fine polished finish

 $A=9\frac{1}{8}" / B=1\frac{1}{8}"$ 

01691400

14.11 oz

13 $\frac{3}{8}"$ 

1

**85 / POLISHING HAMMER**

1 slightly curved, 1 strongly curved face, fine polished finish

 $A=1\frac{1}{2}" / B=1\frac{1}{2}"$ 

70710750

26.46 oz

5 $\frac{1}{8}"$ 

1

**86 / LOCKSMITH'S HAMMER**

DIN 1041, curved ashwood handle, special oval bolster

01710400

14.11 oz

12"

1



## 87 TINMAN'S HAMMER, PVC

Polydur, angular



QR-code page 52

01674000	19.40 oz	3 1/4" x 3 1/4" x 5 1/8"	1
----------	----------	-----------------------------	---



## 88 PVC HAMMER

PVC, round

01678060	15.87 oz	Ø 2 3/8" x 4 1/4"	1
01678070	19.05 oz	Ø 2 3/4" x 4 3/4"	1
01678080	27.87 oz	Ø 3 1/4" x 5 1/2"	1



## 89 PVC HAMMER

Polydur, angular

QR-code page 52

01678145	19.40 oz	5 3/4" x 1 3/8" x 3"	1
01678155	21.16 oz	6 1/8" x 1 3/8" x 3 3/8"	1



## 90 DEAD BLOW SOFT FACED HAMMER

With polished finish, lacquered, curved Hickory-handle, head of shock-resistant nylon, nature



Ø 1 1/4"	01670032	21.16 oz	13 3/4"	1
Ø 2"	01670050	41.62 oz	15 1/8"	1



## 91 WOODEN HAMMER

With metal ring

QR-code page 52

01676000	13.05 oz	Ø 2 3/8"	1
----------	----------	----------	---



**92 / TINMAN'S HAMMER**

Edged, beechwood hammer head, with hardwood handle



01673000	20.46 oz	3½" x 2"	1
----------	----------	----------	---

**93 / TINMAN'S HAMMER**

Round, beechwood hammer head, with hardwood handle

01672000	19.40 oz	Ø3¼" x 6¼"	1
----------	----------	------------	---

**94 / CHASE WEDGE**

Hardwood, with cramp

01950000	0.23 lb	Ø2¾" x 7¼"	1
01951000	0.53 lb	Ø3½" x 8¾"	1

**95 / BOSSING MALLET**

Hardwood

01930060	0.67 lb	2¾" x 5¾"	1
----------	---------	-----------	---

**96 / BOTTOM-SWAGE**

groove width ¼"

01040006	0.83 lb	¼"	1
----------	---------	----	---

groove width ⅜"

01040008	0.96 lb	⅜"	1
----------	---------	----	---

groove width ½"

01040010	0.99 lb	½"	1
----------	---------	----	---



## 97 SOLDERING IRON SET IN A METAL BOX

Automatic soldering iron with Piezo ignition and gas-cartridge no. 66444000,  
2 spare-gas cartridge no. 64440086, bottle for soldering fluid no. 03331000,  
2 soldering fluid brush no. 03390000



QR-code page 52

66440000	6.84 lb	14 1/8"	1
----------	---------	---------	---



## 98 PREMIUM SOLDERING KIT

Includes express soldering iron for zinc, copper and stainless with automatic push button ignitor,  
swivel hose attachment, 70 seconds start up time, iron length 11 5/8", iron weight 34.5 oz

Also included in the premium soldering kit:

- Medium Tip (9 oz, 3 3/4" length)
- Regulator (30 - 60 PSI, UL listed, compact design)
- LP Gas Quick Connects (for fast connection and disconnect of soldering iron and hose, no further tools needed, made of brass, LH 9/16)
- Hose (12" foot hose, UL listed)
- Soldering Block Holder (ammonia stone for soldering, brush holder, flux canister)
- Soldering Flux - Gel (for new metals (zinc and copper), gel is easy to handle and simple to use)
- Soldering Fluid Bottle (for soldering fluid, acids, etc., with screw cap)
- Soldering Fluid Brushes (25 pcs. in a bag, for soldering fluid, acids, oil, etc.)
- STACK - ON Pro-Tough Tool Box (23" galvanized steel hinge pins, large riveted nickel plated, steel draw bolts secure the lid, includes a deluxe, removable tray, fully lockable with padlock eye)

66440001	8.27 lb	22 7/8"	1
----------	---------	---------	---



## 99 STANDARD SOLDERING KIT

Includes express soldering iron for zinc, copper and stainless with swivel hose attachment,  
80 seconds start up time, iron length 13 1/4", iron weight 33oz

Also included in the standard soldering kit:

- Medium Tip (9 oz, 3 3/4" length)
- Regulator (30 - 60 PSI, UL listed, compact design)
- LP Gas Quick Connects (for fast connection and disconnect of soldering iron and hose, no further tools needed, made of brass, LH 9/16)
- Hose (12" foot hose, UL listed)
- Soldering Fluid Brushes (25 pcs. in a bag, for soldering fluid, acids, oil, etc.)
- STACK - ON Pro-Tough Tool Box (23" galvanized steel hinge pins, large riveted nickel plated, steel draw bolts secure the lid, includes a deluxe, removable tray, fully lockable with padlock eye)

66440002	7.27 lb	22 7/8"	1
----------	---------	---------	---



## 100 PERKEO KIT USA

Includes High-performance propane soldering iron with copper piece, ergonomically designed  
handle made of hard wood, very well insulated. Rotatable tube connection, for either M10x1  
or G 3/8" LH. Valve seal made of Teflon. Back cap and valve rod made of stainless steel

Also included in the Perkeo kit USA:

- Soldering Iron Tip Pointed shaped with 3 7/8" pin, 0.77 lb
- Quick connector 2 part clutch with automatic gas cut for tool-free replacing of the torch with connected gas cylinder
- High Pressure Hose, HD-rubber hose, 12" foot hose, UL listed
- Stand, Foot stand and suspension hook for all heavy-duty soldering irons
- Wind Protection, for all heavy-duty soldering irons, made of robust sheet steel
- STACK - ON Pro-Tough Tool Box (16" galvanized steel hinge pins, large riveted nickel plated, steel draw bolts secure the lid, includes a deluxe, removable tray, fully lockable with padlock eye)

66660000	6,61lb	22 7/8"	1
----------	--------	---------	---



**101 / SOLDERING IRON WITH PATENTED CERCO-BURNER**

With Piezo ignition and rotational tube connection technical details: a circular flame surrounds the soldering iron tip which causes a quick warming up as well as a reduced gas consumption, soldering iron tip: 360° turnable, inclination angle adjustable by 10°, available in 4 models, metal bow: adjustable in 2 positions, with spring lock - 100% windprotection through combustion chamber - immediately ready for use through a new burning technique; the working temperature is reached after 1 minute -turnable tube makes an easy handling possible -armoured piezo-system with approx. 50.000 ignitions and 2 years warranty -GS/TÜV homologated



QR-code page 52

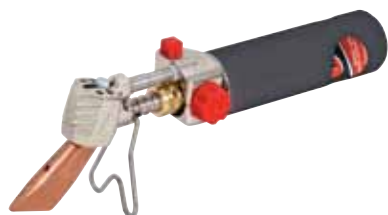
Spare Piezo Ignitor

66434000	2.21 lb	13 3/8"	1
66444002	0.44 lb	1 5/8"	1

**102 / SOLDERING IRON WITH CERCO-BURNER**

With rotatable tube connection

66432001	1.98 lb	13 3/8"	1
----------	---------	---------	---

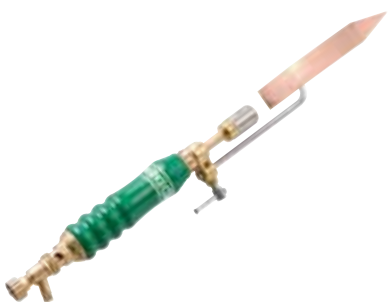
**103 / AUTOMATIC SOLDERING IRON WITH GAS CARTRIDGE**

With patented CERCO-burner and Piezo ignition, in each position immediately ready for use through its special cartridge, burning duration 1-2 hours through optimized burner, ideal for repairs, extremely handy, no tube, no gas bottle, TÜV/GS homologated



Spare Piezo Ignitor

66444000	2.43 lb	14 1/8"	1
66444002	0.44 lb	1 5/8"	1

**104 / HIGH PERFORMANCE PROPANE SOLDERING IRON WITH COPPER PIECE**

This high performance propane soldering iron is a sophisticated, quality product that is made only from the finest materials such as stainless steel, solid brass and teflon, exceptionally heavy duty, low maintenance and easy to operate, it is ideal for everyday use, despite moisture, solder chemicals or any other tough conditions, this iron will continue to function at the highest level, the high performance propane soldering iron burns straightaway, in less than 55 seconds the 0.77 lb soldering bit heats to the operating temperature, there's no easier or more time-saving method of soldering available, you can work with the powerful and constant flame even in strong winds and without using a windbreak, ergonomically designed handle made of hard wood, very well insulated. Rotatable tube connection, for either M10x1 or G 3/8" LH, valve seal made of Teflon, back cap and valve rod made of stainless steel, performance: 1,67 KW, Consumption with 1,5 bar: 130 g/h.

with copper tip, pointed shaped

66434100	2.18 lb	16 1/2"	1
----------	---------	---------	---

**105 / HIGH PERFORMANCE SPARE GAS CARTRIDGE POWER GAS**

Top burning capacity, temperature 2000°C, 6 bar pressure, recommended for low surrounding temperature, burning duration approx. 1-2 hours, suitable for soldering irons and heat guns, 26% Propene

64440086	115	170 / 110 ml	12
----------	-----	--------------	----



## MAKE YOUR TOOL **A FRIEND**

***FREUND offers a complete line of soldering equipment for all sheet metal roofing needs:***

- ✓ ***The Express Soldering irons with self ignition/combustion chamber system/built in gas canisters***
- ✓ ***A variety of tips in different sizes and weights***
- ✓ ***The unbeatable coated tips for soldering without filling and reforging***
- ✓ ***The soldering gel***
- ✓ ***The small things that you need to start the job right away, such as regulators, quick connects, hoses, brushes and ammonia stones***

**106 / SOLDERING IRON TIP BENT**

bent tip

66480002

0.53 lb

3 3/4"

1

**107 / SOLDERING IRON TIP**

light tip

66480003

0.41 lb

3 1/8"

1

**108 / SOLDERING IRON TIP**

middle tip

66450001

0.52 lb

4 3/8"

1

**109 / SOLDERING IRON TIP**

heavy tip

66480001

0.69 lb

5 3/4"

1

heavy tip

66490004

1.46 lb

5 3/4"

1

**110 / SOLDERING IRON TIP TURBO**

20% faster heating of the copper tip by a special boring



middle tip

66460001

0.52 lb

4 3/8"

1

heavy tip

66470001

0.69 lb

5 3/4"

1

	#				
--	---	--	--	--	--

### 111 SOLDERING IRON TIP, COATED

Soldering without ammonia stone and reworking

bent tip	66481002	0.53 lb	3 3/4"	1
----------	----------	---------	--------	---



### 112 SOLDERING IRON TIP, LONG LIFE

light tip	66481003	0.41 lb	3 7/8"	1
-----------	----------	---------	--------	---



### 113 SOLDERING IRON TIP, LONG LIFE

middle tip	66451001	0.52 lb	4 3/8"	1
------------	----------	---------	--------	---



### 114 SOLDERING IRON TIP, LONG LIFE

heavy tip	66481001	0.70 lb	5 3/4"	1
-----------	----------	---------	--------	---



### 115 SOLDERING IRON TIP

Hammer shaped with 3 7/8" pin

for soldering iron 66434100	66490001	0.55 lb	3 1/2"	1
	66490002	0.77 lb	3 7/8"	1
	66490003	1.10 lb	3 7/8"	1



**116 / SOLDERING IRON TIP***Pointed shaped with 3 7/8" pin*for soldering iron 66434100 **104**

66490005	0.55 lb	8 1/8"	1
66490006	0.77 lb	8 1/2"	1
66490007	1.10 lb	8 3/4"	1

**117 / ZINNLUX LONGIFE SOLDERING TIP***Pointed shaped, coated, with 3 7/8" pin*for soldering iron 66434100 **104**

66490008	0.53 lb	3 3/4"	1
----------	---------	--------	---

**118 / SOLDERING IRON TIP, ZINNLUX***Soldering without ammonia stone and reworking, hammer shaped with 3 7/8" pin*for soldering iron 66434100 **104**

66491002	0.52 lb	4 1/8"	1
----------	---------	--------	---

**119 / QUICK CONNECTOR***2 part clutch with automatic gas cut for tool-free replacing of the torch with connected gas cylinder*

66640001	0.26 lb	2 3/4"	1
----------	---------	--------	---

**120 / HIGH PRESSURE HOSE***HD-rubber hose, 12" foot hose, UL listed*

66631000	1.87 lb	12"	1
----------	---------	-----	---

**121 / ADAPTER USA***For propane soldering iron, with male and female thread*

66640002	0.44 lb	0,63"	1
----------	---------	-------	---




## 122 HIGH PRESSURE REGULATOR

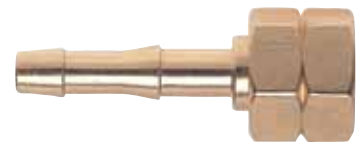
High-pressure regulator, 30 - 60 PSI, UL listed



66620011	0.73 lb	5 3/8"	1
----------	---------	--------	---

## 123 HOSE COUPLING

Threaded hose couplings with left hand thread, hose nipples with cap nuts, for soldering iron 66434100 




screw thread M10x1LH, Ø 1/2" - Nipple

66650000	0.02 lb	SW 12 x 28	1
----------	---------	------------	---

## 124 STAND

Foot stand and suspension hook for all heavy-duty soldering irons



for soldering iron 66434100 

66420100	0.88 lb	3 3/8" x 3 1/4"	1
----------	---------	-----------------	---

## 125 WIND PROTECTION

For all heavy duty soldering irons, made of robust sheet steel



for soldering iron 66434100 

66481001	0.70 lb	5 3/4"	1
----------	---------	--------	---

## 126 CAP FOR SCREEN HEAD

For screen head for heavy duty propane soldering iron, made of high quality stainless steel



for soldering iron 66434100 

66420300	0.02 lb	Ø 3/4" x 1 1/8"	1
----------	---------	-----------------	---

**127 / SCREEN HEAD**

For heavy-duty propane soldering iron, made of solid brass - with 11 bores for an optimum burning behavior



for soldering iron 66434100

104

66420400

0.13 lb

Ø 3/4" x 3/4"

1

**128 / T - SCREW**

For all heavy duty soldering irons, pin and screw made of galvanized steel - can be fixed by hand



for soldering iron 66434100

104

66420500

0.04 lb

1 1/2"

1

**129 / SPARE ORIFICE**

For heavy duty propane soldering iron, made of solid brass, with 31 gauge tip bore for an optimum burning performance



for soldering iron 66434100

104

66420600

0.04 lb

1"

1

**130 / SPINDLE WHEEL**

Hand wheel with valve stem for KLEIN RISTA handle, manifolds, etc., made of shaped brass - valve stems made of high-quality stainless steel - gaskets of valves made of indestructible teflon - on the gas side with spring mechanism for exact flame adjustment - completely assembled



66420700

0.07 lb

Ø 7/8" x 1 1/4"

1

**131 / GAS LIGHTER**

Gun-shaped gas lighter - refill pack: 4/8" x 1/4" mm replacement flints in small box, for soldering iron 66434100 & 66432001



gas lighter

66520000

0.11 lb

6 1/4"

1

replacement flints, 12 pieces

66520010

0.04 lb

Ø 7/8" x 3/8"

1



### 132 FLUX FOR TIN-SOLDER

For new metals (copper, zinc)

QR-code page 50

66400320	1.10 lb	320 g	12
----------	---------	-------	----



### 133 FLUX FOR TIN-SOLDER

For oxidized metals (copper, zinc)

66401320	1.10 lb	320 g	12
----------	---------	-------	----



### 134 SOLDERING FLUID BRUSH

Dark bristles, app. 10 - 15 mm wide, for soldering fluid, acids, oil etc.

25 pcs.	03390025	0.17 lb	3/8"	1
---------	----------	---------	------	---



### 135 SOLDERING SET LÖT MAX

For easy soldering works, additional grip surface on roofs



QR-code page 52

soldering stone, tank, soldering fluid brush	03310000	0.44 lb	6 7/8" x 3 3/4"	1
--	----------	---------	-----------------	---



### 136 SOLDERING SET LÖT MAX COMBI

For easy soldering works, additional grip surface on roofs



soldering stone, 2 tanks, 2 soldering fluid brushes	03311000	0.60 lb	9 7/8" x 3 3/4"	1
---	----------	---------	-----------------	---



**137 AMMONIA STONE FOR SOLDERING**

For LÖT MAX and LÖT MAX COMBI



03322000	0.22 lb	3 1/8" x 2" x 3/4"	1
----------	---------	--------------------	---

**138 BOTTLE FOR HYDROCHLORIC ACID/SOLDERING FLUID**

Polyethylene bottle



hydrochloric acid bottle, blue  
soldering fluid bottle, yellow

03330000	0.20 lb	5 7/8"	1
03331000	0.20 lb	5 7/8"	1

**139 GUTTER HANGER BENDER**

Castor-roll, head made of malleable casting GTW 40, zinc-plated, steel tubes with plastic handles, for a bracket strength up to 1 5/8" x 3/8"



QR-code page 50

01000600	7.06 lb	23 3/8"	1
01000800	7.72 lb	31 1/2"	1

**140 PIPE CRIMPER WITH 5 BLADES**

Progressive reduction of the pipe diameter, swaging up to 1 1/8"



01320002	1.09 lb	9 5/8"	1
----------	---------	--------	---

**141 EXPANDER FOR PIPES**

For expanding all usual pipes of copper, aluminium and zinc, forward feed and reverse motion, hexagone, additional supplies: through belt ratchet for manual operation no. 01320010 and adaptor for SDS-plus record no. 01320020



QR-code page 50

special steel hardened, gun metal finish

01320076	3.18 lb	3"	1
01320080	3.40 lb	3 1/8"	1
01320100	4.96 lb	3 7/8"	1



# 142 / FREUND-TOGGLE JOINT HAND RIVETER

Head 360° rotatable, each corner can be reached, industrial quality, with 4 sizes of nose pieces



01302000

1.65 lb

11"

1





## **ROOFING TOOLS** **... FROM FREUND**



**THE DESIGN OF ROOFS AND FACADES REQUIRES HIGH DEMANDS**  
... even for your tools. That's why we offer a large assortment of quality  
tools that are specialized and tailor-made for your work.



**FREUND®**  
... your tool



### ROOFING TOOLS

#### **SLATE HAMMERS**

Leading worldwide in variety and innovation, we offer a assortment on the highest level. Our unique slate hammers Universo® provide the answer to any open question concerning decorative slate covering.

#### **SLATE RIPPERS**

Who can offer more? There are many forms and lengths for a worldwide demand. Forged out of one piece, with a changeable or a solid blade either in stainless steel or with a flexible spring tempered blade – you decide.

#### **MASTERCUT®**

Light, manageable and strong. An excellent design, practical function and high quality all speak for the MasterCut® as well as for the other slate tools and machines from the FREUND-Production.

 **FREUND**<sup>®</sup>  
... your tool



MADE IN GERMANY   
DEUTSCHES  
WERKZEUG



## OUR HANDMADE **FREUND** – SLATE RIPPER



*Our slate ripper has been exclusively forged for you  
over the last 150 years*



*Handmade, produced from one piece – quality  
with long tradition*



*Each forging process produces a totally unique  
top quality tool*






**143 UNIVERSAL SLATER'S HAMMER UNIVERSO®, RIGHT/LEFT**

The grinding of the facet is only on one side, for working on both sides of the anvil, with nail puller, handforged, lengthened leather handle, polished finish, head, tip and facets inductively hardened, with tip protection, patent no. 10 2006 002 234



QR-code page 51

right	00020651	22.9 oz	13 $\frac{3}{8}$ "	1
left	00021651	22.9 oz	13 $\frac{3}{8}$ "	1

**144 SLATER'S HAMMER, AMERICAN DESIGN**

Nail puller, handforged, leather handle, polished finish



right	ST052000	24 oz	12 $\frac{5}{8}$ "	1
left	ST053000	24 oz	12 $\frac{5}{8}$ "	1

**145 SLATER'S HAMMER, IRISH DESIGN**

Nail puller, handforged, leather handle, polished finish



right	00050000	23.3 oz	13"	1
left	00051000	23.3 oz	13"	1

**146 SLATER'S HAMMER, CANADIAN DESIGN**

	00076000	22,9 oz	12,6"	1
--	----------	---------	-------	---

**147 SLATER'S ORNAMENT HAMMER UNIVERSO®, RIGHT/LEFT**

Allows the design of arty shapes and nearly all kinds of geometric forms, for working on both sides of the anvil, specially for small radii, rough workings on slate possible, 100% hand-made



QR-code page 51

right	00074000	17.6 oz	11,9"	1
-------	----------	---------	-------	---



#### 148 SLATER'S ANVIL

Straightened, all edges ground, top bent, black

QR-code page 51

straight	00310000	1.2 lb	12 ¼"	1
----------	----------	--------	-------	---



#### 149 SLATER'S ANVIL

Straightened, all edges ground, top bent, black

QR-code page 51

bent	00311000	1.2 lb	12 ¼"	1
------	----------	--------	-------	---



#### 150 ERGO-CUT SLATE CUTTER, NATURAL SLATE AND FIBRE-CEMENT

A manual cutter for all kinds of natural slate and fibre-cement up to a thickness of 1/4", fitted with a punching device, one-hand cutting and punching, ergonomic, changing blades not necessary



QR-code page 50

with punch	00920000	1.4 lb	11 ¾"	1
------------	----------	--------	-------	---



#### 151 ERGO-CUT SLATE CUTTER, NATURAL SLATE AND FIBRE-CEMENT

A manual cutter for all kinds of natural slate and fibre-cement up to a thickness of 1/4", ergonomically formed for an easy and fatigue-proof working, changing blades not necessary



without punch	00910000	1 lb	11 ¾"	1
---------------	----------	------	-------	---





## **What do you have to do differently?**

### **Hold it the right way round!**

*Work as carefully as you always have done. The new construction helps you to be as efficient like no other slate cutter before.*

*When cutting fiber cement, the **MasterCut®** should be held with the hole punch and centimeter scale facing upwards, the breaking edge is formed below and when cutting slate the **MasterCut®** is held the other way round so that the breaking edge is clearly visible.*

*Our inovative tool lies both ways comfortably in the hand - and eases pressure on the wrist during daily work. Cutting is made therefore significantly easier and the end result much more precise. The design is as strong as the quality.*

*Exactly what to expect from an expert!*

152 **MASTERCUT®**

**EVERYTHING AT A GLANCE:**

The innovative design enables an unobstructed view of the cutting length.

**EVERYTHING UNDER CONTROL:**

The brand new construction ensures easier cutting than ever before.

**ALL IN ONE:**

The optimised blade and the punch with a robust, non-breakable spring save time and energy.

**SAFE AND SOUND:**

The new finger and hand protection makes sure that fingers can not be pinched at any time - guaranteed.

**EVERYTHING WITH EASE:**

The superb ergonomics allow an optimal cutting angle and the comfortable soft handles alleviate work considerably.

**EVERYTHING WITH SIMPLICITY:**

The **MasterCut®** consists of but a few parts - making cleaning and maintenance easy. All spare parts can be reached by loosening 3 screws.

**EVERYTHING FROM ONE CAST:**

The slate cutter is manufactured out of one aluminium die-casted mould of highest material consistency and quality.

**EVERYTHING FOR SUCCESS:**

The **MasterCut®** is just like you: determined, confident and success orientated. It is an extension of your arm when working on the roof. A master of masters. It will accompany you every day and for many years.



Product information



QR-code page 50

#			
00950000	27.5 oz	13"	1


**153 SLATE CUTTER SCHIEFERMAX - HEAVY DUTY**

Suits all roof and facing tiles made of slate, artificial slate and fibre cement, body made of high-quality aluminium alloy, weight only 15.2 lb, hardened knife, especially suitable for hard and brittle slate tiles up to 3/8", delivery only basic tool (without punching device and guide)



QR-code page 51

basic tool	00350000	15.2 lb	17 3/4"	1
------------	----------	---------	---------	---

**154 GUIDE FOR SLATE CUTTER SCHIEFERMAX**

Adjustable from 1 1/8" - 12", 0 - 90°



QR-code page 50

	00351000	2.2 lb	16 7/8"	1
--	----------	--------	---------	---

**155 PUNCHING DEVICE FOR SLATE CUTTER SCHIEFERMAX**

A normal steel nail, 1/8" x 1 5/8", is used to punch holes



QR-code page 51

	00352000	2 lb	17 3/8"	1
--	----------	------	---------	---

**156 SLATE RIPPER**

The traditional FREUND slate ripper, hand forged, all out of one piece of steel, with nail claw on the handle



QR-code page 51

00240470	1.6 lb	18 1/2"	1
00240525	1.7 lb	20 3/8"	1
00240600	1.8 lb	23 3/8"	1





### 157 SLATE RIPPER WITH STAINLESS STEEL BLADE, STRAIGHT HANDLE

Heavy handle, ultra flexible 15 gauge interchangeable steel blade with rounded edges is secured with special screws, special holder is suitable for all lengths of blades, delivery contents include an assembly wrench for changing blades



2 symmetrical nail puller	00254470	2.2 lb	18½"	1
2 symmetrical nail puller	00254525	2.2 lb	20⅝"	1
2 symmetrical nail puller	00254600	2.4 lb	24"	1



### 158 REPLACEMENT BLADE FOR SLATE RIPPER

Extra thin, 15 gauge ultra flexible blade, stainless steel, with screws

4 symmetrical nail puller	00253470	0.6 lb	18½"	1
4 symmetrical nail puller	00253525	0.6 lb	20⅝"	1
4 symmetrical nail puller	00253600	0.7 lb	24"	1



### 155 SPECIAL SUPPORT FOR SLATE RIPPER

Heavy handle, screws and socket



	00250002	1.7 lb	8⅝"	1
--	----------	--------	-----	---



### 156 ROOFER'S HAMMER

Steel tube handle with PVC grip and magnetic nail holder, polished finish, DIN 7239



grey handle	00110698	21.1 oz	12⅝"	1
-------------	----------	---------	------	---



### 157 ROOFER'S HAMMER

One piece forged steel, bi-component handle, with magnet



ultra-light	00114002	17.6 oz	12⅝"	1
-------------	----------	---------	------	---



### 158 ROOFER'S HAMMER

Full metal, hammer head, DIN 7239



with leather handle and magnet	00114000	24.7 oz	12⅝"	1
--------------------------------	----------	---------	------	---



**A**


**Angle Flat Scraper - Item-no. 01120000**  
<http://www.freund-cie.com/werkzeugeanwendung/klempner/videos/eckschaleisen>



**Flitz-Folder - Item-no. 01131000**  
<http://www.freund-cie.com/werkzeugeanwendung/klempner/videos/flitz-faltenzieher>


**B**


**Broad Clinching Pliers - Item-no. 01080101**  
<http://www.freund-cie.com/werkzeugeanwendung/klempner/videos/breitfalzzange-01080101>



**FREUND Disk Roller - Item-no. 91611000**  
<http://www.freund-cie.com/werkzeugeanwendung/klempner/videos/freund-teller-kanter-doppelt>


**C**


**Clinching Pliers - Item-no. 01090040**  
<http://www.freund-cie.com/werkzeugeanwendung/klempner/videos/falzzange-gebogen>



**FREUND Disk Roller Double - Item-no. 91610000**  
<http://www.freund-cie.com/werkzeugeanwendung/klempner/videos/freund-teller-kanter-doppelt>



**Clipping Shears System - Item-no. 91190000**  
<http://www.freund-cie.com/werkzeugeanwendung/klempner/videos/ausklinkwerkzeug-91190000/>



**FREUND Standard Edge Roller - Item-no. 91602000**  
<http://www.freund-cie.com/werkzeugeanwendung/klempner/videos/freund-standard-kanter>



**Corner Clinching Pliers - Item-no. 01170060**  
[http://www.freund-cie.com/werkzeugeanwendung/klempner/videos/eck\\_falzzange](http://www.freund-cie.com/werkzeugeanwendung/klempner/videos/eck_falzzange)



**FREUND Standard Edge Roller Double - item-no. 91620000**  
<http://www.freund-cie.com/werkzeugeanwendung/klempner/videos/freund-standard-kanter-doppelt>


**D**


**Double Welt Iron - Item-no. 01110000**  
<http://www.freund-cie.com/werkzeugeanwendung/klempner/videos/doppelfalzeisen>



**FREUND Premium Edge Roller - Item-no. 91600000**  
<http://www.freund-cie.com/werkzeugeanwendung/klempner/videos/freund-premium-kanter>


**E**


**Eaves Closing Edger - Item-no. 91080000**  
<http://www.freund-cie.com/werkzeugeanwendung/klempner/videos/traufenschliesser>



**Flux for Tin Solder - Item-no. 66400320**  
<http://www.freund-cie.com/werkzeugeanwendung/klempner/videos/loetgel>



**Eaves Edger - Item-no. 91070000**  
<http://www.freund-cie.com/werkzeugeanwendung/klempner/videos/traufenkanter>



**Eaves Ruler - Item-no. 91230000**  
<http://www.freund-cie.com/werkzeugeanwendung/klempner/videos/traufenlineal>



**Guide for Slate Cutter Schiefermax - Item-no. 00351000**  
[http://www.freund-cie.com/werkzeugeanwendung/dachdeckerzimmerer/videos/winkelanschlag\\_schiefermax](http://www.freund-cie.com/werkzeugeanwendung/dachdeckerzimmerer/videos/winkelanschlag_schiefermax)



**Ergo-Cut Slate Cutter - Item-no. 00920000**  
<http://www.freund-cie.com/werkzeugeanwendung/dachdeckerzimmerer/videos/schieferhaubuecke>



**Gutter Hanger Bender - Item-no. 01000600**  
<http://www.freund-cie.com/werkzeugeanwendung/klempner/videos/rinnenrenn-abbiegezange>



**Expander for Pipes - Item-no. 01320076**  
<http://www.freund-cie.com/werkzeugeanwendung/klempner/videos/rohraufweitgeraet>



**Hand Notcher - Item-no. 00371000**  
<http://www.freund-cie.com/werkzeugeanwendung/klempner/videos/ausklingschere>


**F**


**Flat Nose Pliers - Item-no. 01370240**  
<http://www.freund-cie.com/werkzeugeanwendung/klempner/videos/freund-premium-kanter>



**MasterCut® - Item-no. 00950000**  
<http://www.freund-cie.com/index.php?id=65&asset=505>


**M**

N



**Notch Punching Machine - Item-no. 00360020**

<http://www.freund-cie.com/werkzeugeanwendung/klempner/videos/loetzange-00360020>



**Seam Opening Pliers - Item-no. 01070250**

<http://www.freund-cie.com/werkzeugeanwendung/klempner/videos/falzaufbiegezange>



O



**Offset Cutting Snips - Item-no. 01290240**

[http://www.freund-cie.com/werkzeugeanwendung/klempner/videos/dealschere\\_01290240](http://www.freund-cie.com/werkzeugeanwendung/klempner/videos/dealschere_01290240)



**Shape and Straight Cutting Snips - Item-no. 01292260**

<http://www.freund-cie.com/index.php?id=162>



**Offset Cutting Snips - Item-no. 01295260**

[http://www.freund-cie.com/werkzeugeanwendung/klempner/videos/dealschere\\_01295260/](http://www.freund-cie.com/werkzeugeanwendung/klempner/videos/dealschere_01295260/)



**Shape and Straight Cutting Snips - Item-no. 01294260**

<http://www.freund-cie.com/werkzeugeanwendung/klempner/videos/dealschere-01294260>



**Offset Cutting Snips - Item-no. 01293260**

[http://www.freund-cie.com/werkzeugeanwendung/klempner/videos/dealschere\\_01293260](http://www.freund-cie.com/werkzeugeanwendung/klempner/videos/dealschere_01293260)



**Sheetbending Jaw - Item-no. 91040000**

<http://www.freund-cie.com/werkzeugeanwendung/klempner/videos/dealschere-01293260>



**Offset Cutting Snips Mini - Item-no. 01290180**

<http://www.freund-cie.com/werkzeugeanwendung/klempner/videos/dealschere-mini>



**Slater's Anvil Bent - Item-no. 00311000**

<http://www.freund-cie.com/werkzeugeanwendung/klempner/videos/freund-standard-kanter-doppelt>



P



**Punching Device - Item-no. 00352000**

[http://www.freund-cie.com/werkzeugeanwendung/dachdeckerzimmerer/videos/lochvorrichtung\\_schiefermax](http://www.freund-cie.com/werkzeugeanwendung/dachdeckerzimmerer/videos/lochvorrichtung_schiefermax)



**Slater's Anvil Straight - Item-no. 00310000**

[http://www.freund-cie.com/werkzeugeanwendung/dachdeckerzimmerer/videos/schieferhaubrucke\\_00310000](http://www.freund-cie.com/werkzeugeanwendung/dachdeckerzimmerer/videos/schieferhaubrucke_00310000)



**Punching Machine - Item-no. 00360010**

<http://www.freund-cie.com/werkzeugeanwendung/klempner/videos/loetzange-00360010>



**Slate Cutter Schiefermax - Item-no. 00350000**

[http://www.freund-cie.com/werkzeugeanwendung/dachdeckerzimmerer/videos/schieferschere\\_schiefermax](http://www.freund-cie.com/werkzeugeanwendung/dachdeckerzimmerer/videos/schieferschere_schiefermax)



**PVC Hammer - Item-no. 01678145**

[http://www.freund-cie.com/werkzeugeanwendung/klempner/videos/kunststoffhammer\\_kantig](http://www.freund-cie.com/werkzeugeanwendung/klempner/videos/kunststoffhammer_kantig)



**Slater's Hammer Universo® - Item-no. 00020651**

[http://www.freund-cie.com/werkzeugeanwendung/dachdeckerzimmerer/videos/schieferhammer\\_universo](http://www.freund-cie.com/werkzeugeanwendung/dachdeckerzimmerer/videos/schieferhammer_universo)



R



**Roofer's Hammer - Item-no. 00114002**

[http://www.freund-cie.com/werkzeugeanwendung/dachdeckerzimmerer/videos/latthammer\\_00114002](http://www.freund-cie.com/werkzeugeanwendung/dachdeckerzimmerer/videos/latthammer_00114002)



**Slater's Ornament Hammer Universo® - Item-no. 00074000**

[http://www.freund-cie.com/werkzeugeanwendung/dachdeckerzimmerer/videos/schieferhammer\\_universo\\_ornament](http://www.freund-cie.com/werkzeugeanwendung/dachdeckerzimmerer/videos/schieferhammer_universo_ornament)



**Round Nose Pliers - Item-no. 01360240**

<http://www.freund-cie.com/werkzeugeanwendung/klempner/videos/rundzange>



**Slate Ripper - Item-no. 00240470**

[http://www.freund-cie.com/werkzeugeanwendung/dachdeckerzimmerer/videos/hageleisen\\_00240400](http://www.freund-cie.com/werkzeugeanwendung/dachdeckerzimmerer/videos/hageleisen_00240400)



S



**Scriber - Item-no. 01133000**

<http://www.freund-cie.com/werkzeugeanwendung/klempner/videos/anreisschablone-01132000>



**Small Clinching Pliers - Item-no. 01080022**

[http://www.freund-cie.com/werkzeugeanwendung/klempner/videos/mini\\_falzzange\\_gerade](http://www.freund-cie.com/werkzeugeanwendung/klempner/videos/mini_falzzange_gerade)



**Seaming Tongs - Item-no. 01141120**

<http://www.freund-cie.com/werkzeugeanwendung/klempner/videos/deckzange>



**Small Clinching Pliers - Item-no. 01090022**

[http://www.freund-cie.com/werkzeugeanwendung/klempner/videos/mini\\_falzzange\\_gebogen](http://www.freund-cie.com/werkzeugeanwendung/klempner/videos/mini_falzzange_gebogen)





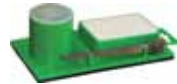
**Soldering Iron - item-no. 66434000**  
<http://www.freund-cie.com/werkzeugeanwendung/klompner/videos/loetkolben>



**Soldering Iron Set in a Metal Box - Item-no. 66440000**  
<http://www.freund-cie.com/index.php?id=66&asset=207>



**Soldering Set Löt Max - Item-no. 03310000**  
<http://www.freund-cie.com/werkzeugeanwendung/klompner/videos/loetmax>



**Squeezing Folding Plier - Item-no. 01130000**  
<http://www.freund-cie.com/werkzeugeanwendung/klompner/videos/quetschfalzeisen>



**Square Seam Folder - Item-no. 91100000**  
<http://www.freund-cie.com/werkzeugeanwendung/klompner/videos/winkelfalzschliesser>



**Square Seam Folder - Item-no. 91101000**  
[http://www.freund-cie.com/werkzeugeanwendung/klompner/videos/winkelfalzschliesser\\_stehend](http://www.freund-cie.com/werkzeugeanwendung/klompner/videos/winkelfalzschliesser_stehend)



**Tile Edger - Item-no. 91160000**  
[http://www.freund-cie.com/werkzeugeanwendung/klompner/videos/pfannen\\_eckkanter](http://www.freund-cie.com/werkzeugeanwendung/klompner/videos/pfannen_eckkanter)



**Tinedge Jaws - Item-no. 91010000**  
<http://www.freund-cie.com/werkzeugeanwendung/klompner/videos/blechkantenzange>



**Tinman's Hammer - Item-no. 01674000**  
[http://www.freund-cie.com/werkzeugeanwendung/klompner/videos/kunststoffhammer\\_mit\\_finne](http://www.freund-cie.com/werkzeugeanwendung/klompner/videos/kunststoffhammer_mit_finne)



**Twin Square Seam Folder - Item-no. 91170000**  
<http://www.freund-cie.com/werkzeugeanwendung/klompner/videos/winkeldoppelfalzer>



**Twin Square Seam Solder - Item-no. 91171000**  
[http://www.freund-cie.com/werkzeugeanwendung/klompner/videos/winkeldoppelfalzer\\_stehend](http://www.freund-cie.com/werkzeugeanwendung/klompner/videos/winkeldoppelfalzer_stehend)



**Wooden Hammer - Item-no. 01676000**  
<http://www.freund-cie.com/werkzeugeanwendung/klompner/videos/holzhammer>





**MAKE YOUR TOOL *A FRIEND***

 **QUALITY TOOLS**

 **PROFESSIONAL SERVICE**

 **VARIETY DELIVERY PROGRAM**

**A**

ADAPTER FOR FREUND EDGE ROLLER	10
ADAPTER USA	34
AMMONIA STONE FOR SOLDERING	38
ANGLE FLAT SCRAPER	26
AUTOMATIC SOLDERING IRON WITH GAS CARTRIDGE	30

**B**

BOSSING MALLET	28
BOTTLE FOR HYDROCHLORIC ACID/SOLDERING FLUID	38
BOTTOM-SWAGE	28
BROAD CLINCHING PLIERS	12

**C**

CAP FOR SCREEN HEAD	35
CHASE WEDGE	28
CLINCHING PLIERS	11 - 12
CLIPPING SHEARS SYSTEM 133 AKW	18
COMBINATION CUTTING SNIPS	21
CORNER CLINCHING PLIERS	13
CRIMPER / FOLDING TONGS 114 FD	18

**D**

DEAD BLOW SOFT FACED HAMMER	27
DOUBLE WELT IRON	25

**E**

EAVES CLOSING JAW 106 TSCA	16
EAVES EDGER	16
EAVES RULER	16
ERGO-CUT SLATE CUTTER	45
EXPANDER FOR PIPES	38

**F**

FLAT NOSE PLIERS	13
FLAT SCRAPER	25
FLIZ-FOLDER	25
FLUX FOR TIN-SOLDER	37
FREUND DISC ROLLER	8, 10
FREUND DISK ROLLER	8
FREUND MAXI EDGE ROLLER	9
FREUND MAXI EDGE ROLLER DOUBLE	9
FREUND PERFECT BENDER	10
FREUND PREMIUM EDGE ROLLER	9
FREUND PREMIUM EDGE ROLLER DOUBLE	10
FREUND RADIUS ROLLER	8
FREUND STANDARD EDGE ROLLER	8
FREUND STANDARD EDGE ROLLER DOUBLE	9
FREUND-TOGGLE JOINT HAND RIVETER	39

**G**

GAS LIGHTER	36
GENUINE AVIATION SNIPS	21 - 22
GROOVING HAMMER	26
GUIDE FOR SLATE CUTTER	48
GUTTER HANGER BENDER	38

**H**

HAMMER FOR ANGLE FLAT SCRAPER	26
HAND CUTTING SYSTEM HSG	18
HAND GRIP FOR FREUND EDGE ROLLER	10
HAND NOTCHER	24
HIGH PERFORMANCE PROPANE SOLDERING IRON	30
HIGH PERFORMANCE SPARE GAS CARTRIDGE POWER GAS	30
HIGH PRESSURE HOSE	34
HIGH PRESSURE REGULATOR	35
HOSE COUPLING	35

**L**

LOCKSMITH'S HAMMER	26
--------------------	----

**M**

MASTERCUT®	47
------------	----

**N**

NOTCH-PUNCHING MACHINE	24
------------------------	----

**O**

OFFSET CUTTING SNIPS	22 - 23
----------------------	---------

**P**

PERKEO KIT USA	29
PIPE CRIMPER	38
POLISHING HAMMER	26
PREMIUM SOLDERING KIT	29
PUNCHING DEVICE FOR SLATE CUTTER	48
PUNCHING MACHINE	24
PUNCH SNIPS	20
PUNCH SNIPS WITH CURVED BLADES	20
PVC HAMMER	27

**R**

REPLACEMENT BLADE FOR SLATE RIPPER	49
ROOFER'S HAMMER	49
ROUNDED CLINCHING PLIERS	13
ROUND NOSE PLIERS	14

**S**

SCREEN HEAD	36
SCRIBER/SCRATCH/MARKING TOOL	24
SEAMING TONGS	14 - 15
SEAM OPENING PLIERS	13
SEMICIRCULAR DORMER SQUARESEAM FOLDER	16
SHAPE AND STRAIGHT CUTTING SNIPS	22
SHEETBENDING-JAW	17
SINGLE-HANDED-EDGER	18
SLATE CUTTER SCHIEFERMAX - HEAVY DUTY	48
SLATE RIPPER	48 - 49
SLATE RIPPER WITH STAINLESS STEEL BLADE, STRAIGHT HANDLE	49
SLATER'S ANVIL	45
SLATER'S HAMMER, AMERICAN DESIGN	44
SLATER'S HAMMER, CANADIAN DESIGN	44
SLATER'S HAMMER, FRENCH DESIGN	44
SLATER'S ORNAMENT HAMMER UNIVERSO®	44
SMALL CLINCHING PLIERS	11
SOLDERING FLUID BRUSH	37
SOLDERING IRON SET	29
SOLDERING IRON TIP	32, 34
SOLDERING IRON TIP BENT	32
SOLDERING IRON TIP, COATED	33
SOLDERING IRON TIP, LONG LIFE	33
SOLDERING IRON TIP TURBO	32
SOLDERING IRON TIP, ZINN LUX	34
SOLDERING IRON WITH CERCO-BURNER	30
SOLDERING IRON WITH PATENTED CERCO-BURNER	30
SOLDERING SET LÖT MAX	37
SOLDERING SET LÖT MAX COMBI	37
SPARE ORIFICE	36
SPECIAL SUPPORT FOR SLATE RIPPER	49
SPINDLE WHEEL	36
SQUARE SEAM FOLDER 111 WFSCH	15
SQUARE SEAM FOLDER, UPRIGHT 128 WFSCHST	15
SQUEEZING FOLDING PLIER	25
STAND	35
STANDARD SOLDERING KIT	29

**T**

TILE EDGER PEK	17
TILE EDGER, SMALL 116 PEK	17
TINEDGE-JAWS 104 BKZ	17
TINMAN'S HAMMER	27 - 28
TINMAN'S HAMMER, PVC	27
TINMEN'S/PELIKAN SNIPS	20

TOOL ROLL WITH CLINCHING PLIERS	14	
TOOL ROLL WITH GENUINE AVIATION SNIPS	23	
T - SCREW	36	
TWINSEAM FOLDER 112 DPF	18	
TWIN SQUARE SEAM FOLDER 117 WDF	15-16	

U \_\_\_\_\_

UNIVERSAL CLINCHING PLIERS	13
UNIVERSAL SLATER'S HAMMER UNIVERSO®	44
UNIVERSAL TIN SNIPS	23

WIND PROTECTION	35	
WOODEN HAMMER	27	

ZINNLUX LONGLIFE SOLDERING TIP 34





ADMINISTRATION AND PRODUCTION  
P.F. FREUND & CIE. GmbH · Hahnerberger Strasse 94-96 · D-42349 Wuppertal  
Phone +49 (0)2 02/4 09 29-0 · Fax +49 (0)2 02/4 09 29-29  
mail@freund-cie.com · www.freund-cie.com



*American Master Gutters, Inc.*

*4333 W. 71st Street*

*Indianapolis, IN 46268*

*P: 317.328.5293*

*Fax: 317.328.5609*

*[americanmastergutters@gmail.com](mailto:americanmastergutters@gmail.com)*

*[www.americanmastergutters.com](http://www.americanmastergutters.com)*

**[www.freund-tools.com](http://www.freund-tools.com)**